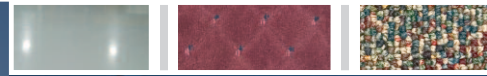


# Advance Terra® 3700B

Multi-Surface Rider Sweeper



DEFINING  
CLEANING  
INNOVATION



An incredible combination of  
productivity and maneuverability  
for hard or soft floors



# Advance Terra® 3700B

## Multi-Surface Rider Sweeper

### High Productivity Sweeping Without Sacrificing Maneuverability, Safety or Comfort.

The Advance Terra® 3700B features a 37 inch (94 cm) sweep path with standard dual side brooms for left or right side edging. The Terra® 3700B's exterior is rotationally molded out of heavy-duty polyethylene and is built around a steel chassis for superior durability.

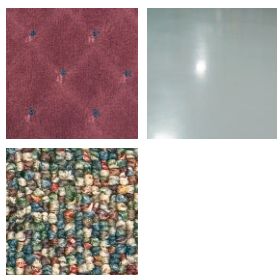
The Advance Terra® 3700B offers a maximum productivity of 52,095 ft²/hr (4,840 m²/hr) combined with incredible maneuverability that allows a 180° forward turn in 59 inches (150 cm). The Terra® 3700B can easily fit through standard doorways with its flexible side brooms, and is small enough to transport on most elevators. Additionally, the Terra® 3700B includes a large 24 Volt, 195 Ah battery power source for maximum run-time and a standard onboard battery charger for convenience. The combination of these factors allows the Terra® 3700B to efficiently clean a wide size range of facilities with both hard and soft flooring.

The Advance Terra® 3700B combines several safety features. The seat and steering column are adjustable to allow a comfortable and ergonomic position for all operators. A two-stage filtration system with automatic filter shaker preserves the indoor air quality while the machine operates at a hospital-quiet sound level to allow for safe cleaning at any time of the day. Optional safety features include: a back-up alarm, flashing beacon, and front headlight.

In keeping with the Total Clean™ design philosophy, the Terra® 3700B is constructed with a clamshell design that allows complete and easy access to all machine components. In addition, the brooms and filters can all be accessed and removed without tools. Total Clean™ features result in lower total cost of ownership and increased productivity to drive down the cost of cleaning.

### Ideal Applications Include —

- Schools and Universities
- Healthcare Facilities
- Retail
- Manufacturing Facilities
- Warehouse/Distribution
- Municipal Facilities
- Stadiums and Arenas



#### VALUE FEATURES



Dual filtration system is accessible without tools and includes electric filter shaker for extended productivity between cleanings.

### ADVANCE TERRA® 3700B INCREASES CARPET-CLEANING PRODUCTIVITY BY OVER 300%



Terra® 3700B – 37 inch (94 cm) battery-powered rider sweeper

24,670 ft²/hr (2,292 m²/hr)



Wide Area Vacuum – 28 inch (71cm) cord-electric

8,000 ft²/hr (743 m²/hr)

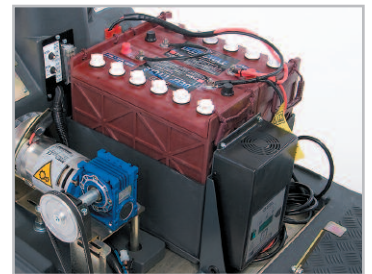


\*Based on productivity numbers published by the International Sanitary Supply Association (ISSA)





Compact size makes the Terra® 3700B easily transportable in elevators.



Large standard 24 Volt, 195 Ah battery package and onboard charger result in maximum run-time and convenience.



Adjustable steering column and seat provide comfort and easy accessibility to enter and exit the operator's position.



Simple and intuitive operator controls to minimize training



Rugged construction with durable components assures years of reliable performance.



Designed to be easy to maintain with open access to all critical systems.



Quieter than most conventional vacuums to allow operation at any time of the day.



No tools needed to adjust main broom height and to quickly remove and replace the main broom.



Clamshell design allows fast and easy access to all machine components for serviceability and preventative maintenance.

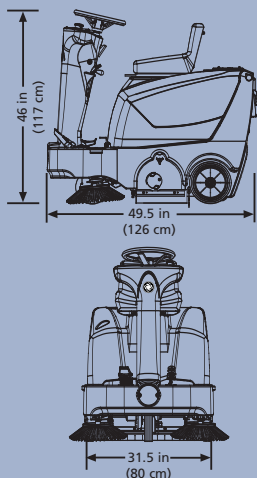
VALUE FEATURES



## Defining Cleaning Innovation...

- Our products are designed using innovative technology that increases productivity and drives down the cost to clean.
- You can get expert service and maintenance for your Advance machines from factory-trained personnel around the world. Fast parts delivery, too.
- Maintain peak performance with Nilfisk Genuine OEM Parts.

 **Nilfisk** Genuine OEM Parts



Optional Onboard Vacuum System converts the Terra® 3700B into a mobile, cordless, canister vacuum for multi-tasking.

## Optional Accessories

- Onboard vacuum system
- Multiple brooms for all applications
- Flashing safety beacon
- Washable polyester filter
- Front headlight
- Back-up alarm

## Advantages of Rider Equipment

- High Productivity – more time for other tasks
- Conserve energy and reduce fatigue
- Enjoy the ride!

## Standard Features

- Compact size and incredible productivity
- Superior maneuverability - 59 inch (150 cm) aisle U-turn
- Large batteries and onboard battery charger
- Dual side brooms
- Whisper-quiet operation
- 2-stage filtration with automatic filter shaker
- Tool-free accessibility and removal of components
- Heavy-duty, durable construction

## Technical Specifications

<b>Sweep Path w/ Dual Side Brooms</b>	37 in (94 cm)
<b>Max. Productivity - Per Hour</b>	52,095 ft <sup>2</sup> (4,840 m <sup>2</sup> ) @ 3.2 mph (5.15 kph)
<b>Min. Turn-around Aisle Width</b>	59 in (150 cm)
<b>Sweeping Principle</b>	Over-Throw
<b>Main Broom Sweep Path</b>	24 in (61 cm)
<b>Side Broom(s)</b>	(2) 13.5 in (34 cm) diameter right & left
<b>Power Source</b>	24 V system - (2) 12 V batteries (onboard battery charger)
<b>Hopper Capacity</b>	1.75 ft <sup>3</sup> (50 L)
<b>Filtration System</b>	32 ft <sup>2</sup> (3 m <sup>2</sup> ) area pleated filter w/ carpet pre-filter and electric shaker
<b>Sound Level</b>	71.5 dB A
<b>Length</b>	49.5 in (126 cm)
<b>Width</b>	31.5 in (80 cm)
<b>Height</b>	46 in (117 cm)
<b>Weight w/ batteries</b>	553 lb (251 kg)
<b>Weight w/o Batteries</b>	327 lb (148 kg)
<b>Part Number</b>	56 100 790

Specifications are subject to change without notice.



**Advance**  
by Nilfisk-Advance

14600 21st Avenue North  
Plymouth, MN 55447-3408  
www.advance-us.com  
Phone: 800-850-5559  
Fax: 800-989-6566

396 Watline Avenue  
Mississauga, Ontario, Canada L4Z 1X2  
www.nilfisk-advance.com  
Phone: 800-668-8400 or 905-712-3260  
Fax: 800-263-5111 or 905-712-3255

©2006, Nilfisk-Advance, Inc., Printed in U.S.A., Form L1634A 7-06