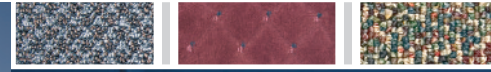


# Advance AquaPLUS™ & AquaPLUS™ AXP™ Carpet Extractors



DEFINING  
CLEANING  
INNOVATION



**Lift**

LIFT™ technology for cleaner,  
"greener" carpet extraction.

 **Advance**  
by Nilfisk-Advance



# Advance AquaPLUS™ & AquaPLUS™ AXP™ Carpet Extractors

## CRI Certified Extraction for a Deeper Clean.

The new AquaPLUS™ and AquaPLUS™ AXP™ battery-powered walk-behind carpet extractors feature Advance's patented *LIFT*™ low-moisture technology for a clean that is CRI-certified. AquaPLUS extractors meet CRI seal of approval standards for soil removal and dry times in both *LIFT* and deep-cleaning restoration mode, giving you the confidence that your carpets will be truly clean and ready to use fast.

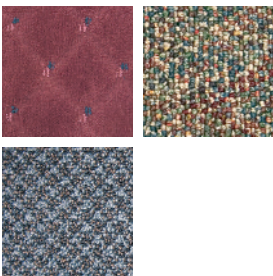
AquaPLUS extractors with *LIFT* (Low-moisture, Indirect spray, Fast dry time, True cleaning) feature a patented spray system for faster dry times. The single-spray nozzle design eliminates streaking and the possibility of water overlap that can lead to delayed drying. The fast dry time of the AquaPLUS extractors make them ideal solutions for daytime cleaning. No other extractors will give you that certified deep clean and get people back on your carpets in less than 30 minutes.

Extractors that receive the CRI Seal of Approval for deep cleaning extractors, have met the highest standards in the industry for their ability to remove soil and water and to preserve carpet appearance. The CRI-certified AquaPLUS extractors will help protect your carpet investment as well as meet green-cleaning standards outlined in the new GS-42 guidelines. The patented AXP system on the AquaPLUS AXP extractor provides the flexibility to clean with any detergent, including those that are green certified. At just 69 dB A, AquaPLUS meets LEED-EB's IEQ credit guidelines for quiet operation. With *LIFT* technology and CRI-certification, the AquaPLUS extractors are the "greenest" carpet extractors in the industry.

The unique Deep Treat™ single-pass, pre-spray feature on the AquaPLUS AXP, eliminates clumsy hand-held spray bottles and allows the proper application of pre-spray chemical, minimizing chemical use and costs. Fast dry times, battery-operation, and a pre-spray feature contribute to increased productivity in your facility.

### Ideal Applications Include —

- Hospitals / Healthcare Facilities
- Schools and Universities
- Churches and Religious Facilities
- Hotels
- Commercial Cleaning
- Government Buildings and Installations
- Airports, Train Stations, Bus Depots
- Casinos
- Office Buildings
- Health Clubs



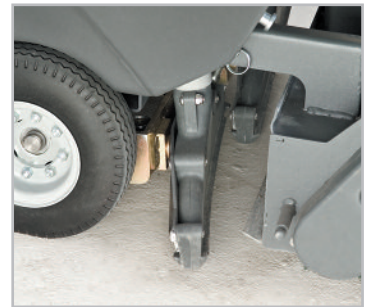
## GREEN

**Air Quality:** Carpets that dry within 30 minutes of extraction reduce the risk of mold and other airborne allergens.

**Safety:** With low sound level and quick dry time, the AquaPLUS™ is safe for daytime cleaning.

**Sustainability:** Dual counter rotating brushes don't wear down carpet fibers as extensively as a vacuum would, preserving the life of the carpet.

**Environmental Impact:** The AXP™ onboard detergent-dispensing system minimizes the use of both chemicals and water.



Dual laminar flow vac shoes allow for more efficient recovery of solution



Single touch button control sets proper operation of all functions. Simplifies training and consistent use by all operators



Tools-free removable brushes make for easy clean-up after use



Dual vac motors pull more water out of the carpet. Recovery tank lid design allows easy access to batteries



**LIFT™ low-moisture technology utilizes a patented indirect spray feature that provides superior cleaning while increasing per tank productivity and reducing water consumption. Operators will experience faster dry times and true cleaning with LIFT™ technology.**



- *LIFT*™, Low Moisture Cleaning Mode
- Deep Treat™ Pre-Spray Mode (AquaPLUS™ AXP™)
- Dual Counter Rotating Brushes
- Removable Debris Hopper
- Dual Laminar Flow Vacuum Shoes
- 250 Ah Batteries
- Onboard Charger

## Defining Cleaning Innovation...

- Our products are designed using innovative technology that increases productivity and drives down the cost to clean.
- You can get expert service and maintenance for your Advance machines from factory-trained personnel around the world. Fast parts delivery, too.
- Maintain peak performance with Nilfisk Genuine OEM Parts.

Nilfisk Genuine OEM Parts

## Optional Accessories

- Anti-Microbial Brushes
- 255 Ah AGM Maintenance-free Batteries
- Tool Caddy
- Carrying Bag
- Battery Watering System
- Electronic Float

## Technical Specifications

### Solution System

Solution Capacity	20 gal (76 L)
Solution Pump	100 psi diaphragm demand

### Flow Rates

Restoration Mode	0.81 gpm (3.1 L/min)
<i>LIFT</i> ™ Mode	0.26 gpm (1 L/min)
Deep Treat™ Pre-Spray Mode	0.92 gpm (3.5 L/min)

Recovery Capacity	16 gal (61 L)
-------------------	---------------

### Vacuum System

Vacuum Motor	Dual 3 stage bypass
Airflow	93 cfm (44 L/sec)
Waterlift	70 in H <sub>2</sub> O (17.4 km/hr)
Vacuum Shoes	Dual 13.5 in (34 cm) Dual pivoting laminar flow 45 lb down pressure

### Brush System

Brushes	Dual 24 in (61 cm) Dual counter rotating with debris hopper
Brush Motors	Dual 1/2 horsepower permanent magnet
Brush Speed	950 RPM

Sound Level	69 dB A
-------------	---------

Electrical System	24 V (4) X 6 V batteries
-------------------	--------------------------

Batteries	250 Ah wet-acid (optional 255 Ah AGM)
-----------	---------------------------------------

### Machine Speed

Transport	220 ft/min (4 km/hr)
<i>LIFT</i> ™ Mode	90 ft/min (1.6 km/hr)
Restoration Mode	50 ft/min (0.9 km/hr)
Light Deep Treat™ Mode	150 ft/min (2.7 km/hr)
Heavy Deep Treat™ Mode	100 ft/min (1.8 km/hr)

Coverage Rate	10,800 ft <sup>2</sup> /hour ( <i>LIFT</i> ™ Mode) 6,000 ft <sup>2</sup> /hour (Restoration Mode)
---------------	---

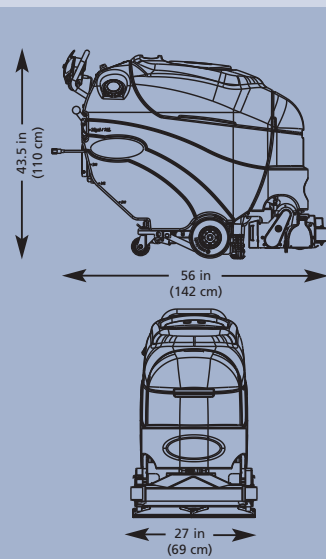
CRI Approval	Bronze for Deep Cleaning Extractors in both Restoration Mode and <i>LIFT</i> ™ Mode
--------------	---

Machine Dimensions	L = 56 in (142 cm) x W = 27 in (69 cm) x H = 43.5 in (110 cm)
--------------------	---

Machine Weight	650 lb (295 kg) with batteries / 370 lb (168 kg) without batteries
----------------	--

Shipping Weight	680 lb (308 kg)
-----------------	-----------------

Part Number	56 317 004 AquaPLUS™	56 317 006 AquaPLUS™ with AGM batteries
	56 317 005 AquaPLUS™ AXP™	56 317 007 AquaPLUS™ AXP™ with AGM batteries



Specifications are subject to change without notice.



by Nilfisk-Advance

14600 21st Avenue North  
Plymouth, MN 55447-3408  
www.advance-us.com  
Phone: 800-850-5559  
Fax: 800-989-6566

396 Watline Avenue  
Mississauga, Ontario, Canada L4Z 1X2  
www.nilfisk-advance.com  
Phone: 800-668-8400 or 905-712-3260  
Fax: 800-263-5111 or 905-712-3255

©2007, Nilfisk-Advance, Inc., Printed in U.S.A., Form L1986A 1-08



recyclable