

American-Lincoln®

3366XP, 4366XP



OPTIONS PARTS LIST

**American-Lincoln Models 579-546, 579-547, 579-548, 579-549, 579-550, 579-551
579-546CE, 579-548CE, 579-550CE, 579-551CE**

After Serial Number 586065

TABLE OF CONTENTS**3366XP, 4366XP****1**

DESCRIPTION	PAGE
Safety Air Cleaner Option	2
Broom Options	3
Back-up Alarm Option	4-5
Blower Attachment Option	6
Tire Options	7
Fire Extinguisher Option	8
Protecto-Seal Gas Cap Option	9
Lights Options	10-15
Curb Light Option	16-17
Overhead Guard Option	18-19
Warning Light Options (W/O Overhead Guard)	20-21
Warning Light Options (W/ Overhead Guard)	22-23
Rear Work Light Option	24-25
Front Wheel Guards Option	26
Suspension Seat Option	27
Retractable Seat Belt Option	28
Timed Shaker Filter Motors Option	29
Left Side Broom Option	30-31
Dual Vacuumized Side Brooms Option	32-33
Vacuum Wand Option	34-35
Wet Sweep Bypass Option	36-37
Clogged Filter Indicator Option	38-39
External Protection Package Option	40-41
Standard Covers Option	42
Stainless Steel Covers Option	43
Stainless Steel Hopper Option	44
Hopper High Temperature Shutdown Option	45
SE Air Cleaner Option (W/ Overhead Guard)	46-47
SE Air Cleaner Option (W/O Overhead Guard)	48-49
A/C Option (Diesel)	50-51
A/C Option (GM 3.0 L)	52-53
Heater Option	54-55

WHEN ORDERING PARTS

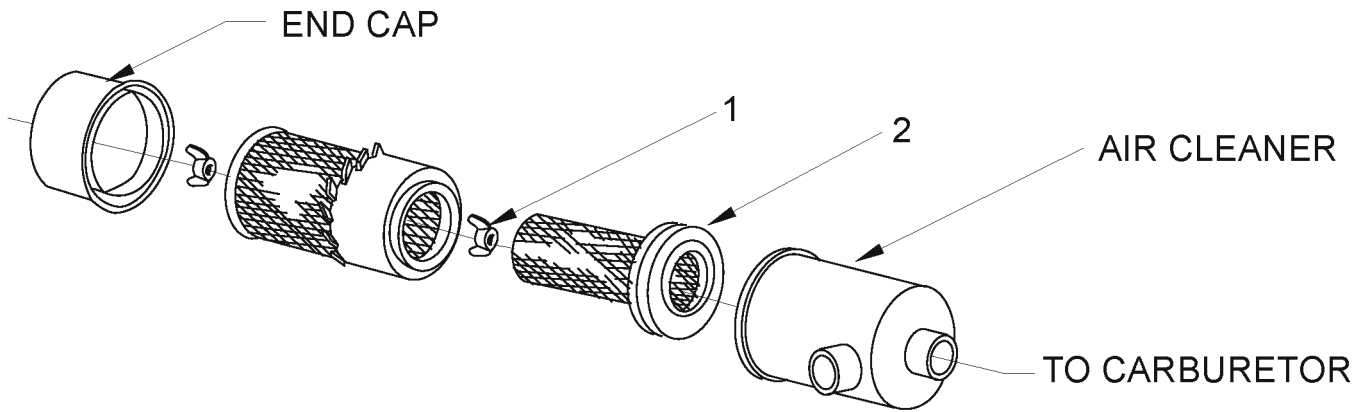
- * Use the 8-10 digit numbers from the "Ref. No." columns in this parts list.
- * Specify the model and serial number of the machine.
- * Use the space below to record the model and serial number for future reference.

Model _____ Serial No. _____

SAFETY AIR CLEANER OPTION

2

3366XP, 4366XP

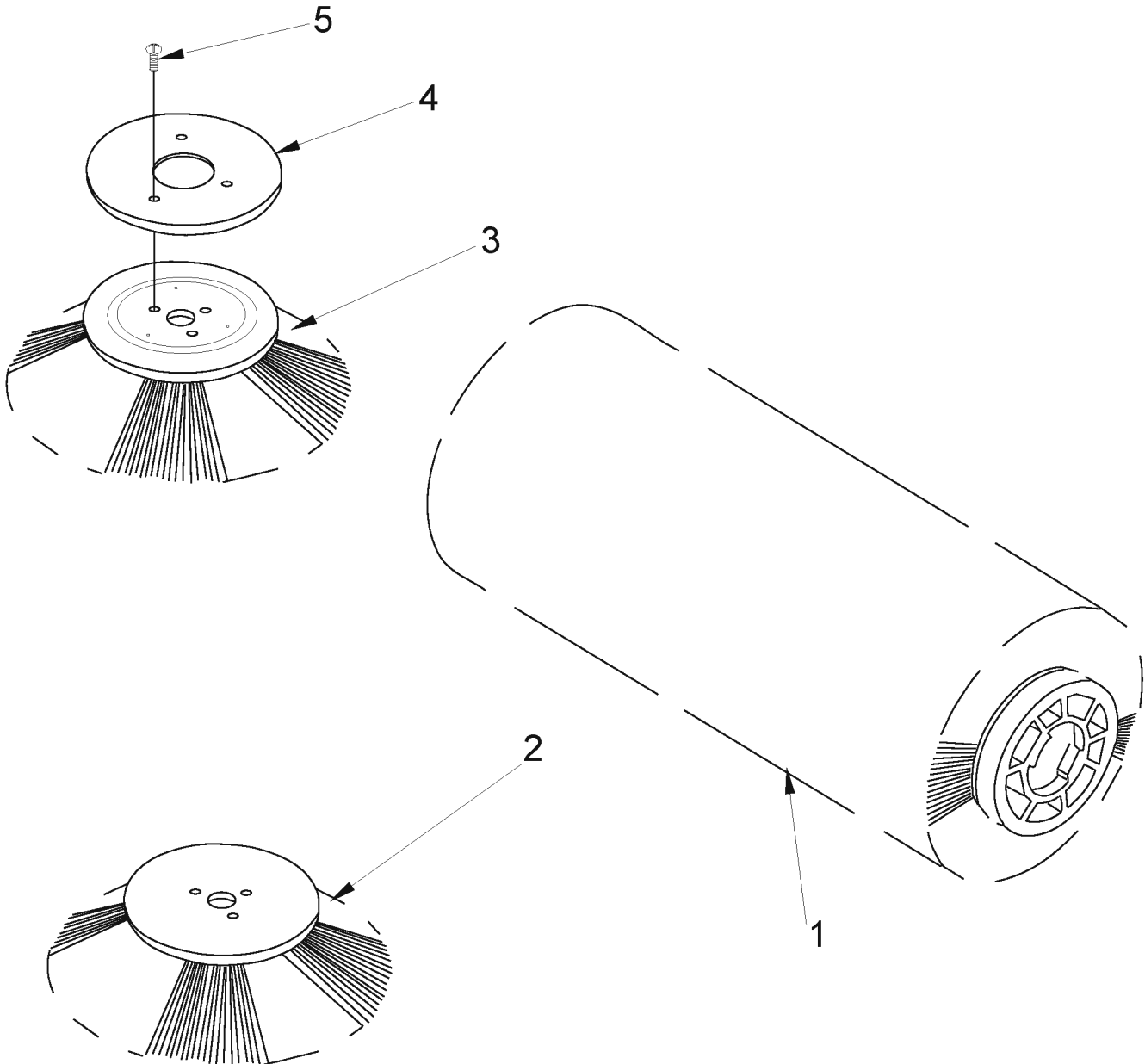


Item	Ref. No.	Qty	Description
1	8-23-03064	1	Wing Nut Assembly
2	8-24-04111	1	Filter Element
3	8-24-04106	1	Filter Element

BROOM OPTIONS

3366XP, 4366XP

3



Item	Ref. No.	Qty	Description
1	8-08-03202	1	Proex and Wire
1	8-08-03204	1	Proex
1	8-08-03191	1	Natural Fiber and Wire
1	8-08-03207	1	Nylon
1	8-08-03209	1	Nylon (Herringbone)
1	8-08-03210	1	Fiber and Wire, High Density
1	8-08-03214	1	Poly and Wire
2	8-08-03212	1	Black Prolene
2	8-08-03211	1	Nylon
3	8-08-03199	1	Wire Broom
4	8-58-05248	1	Plate
5	2-00-04121	3	Screw, #10 - 13 x .750 RHW

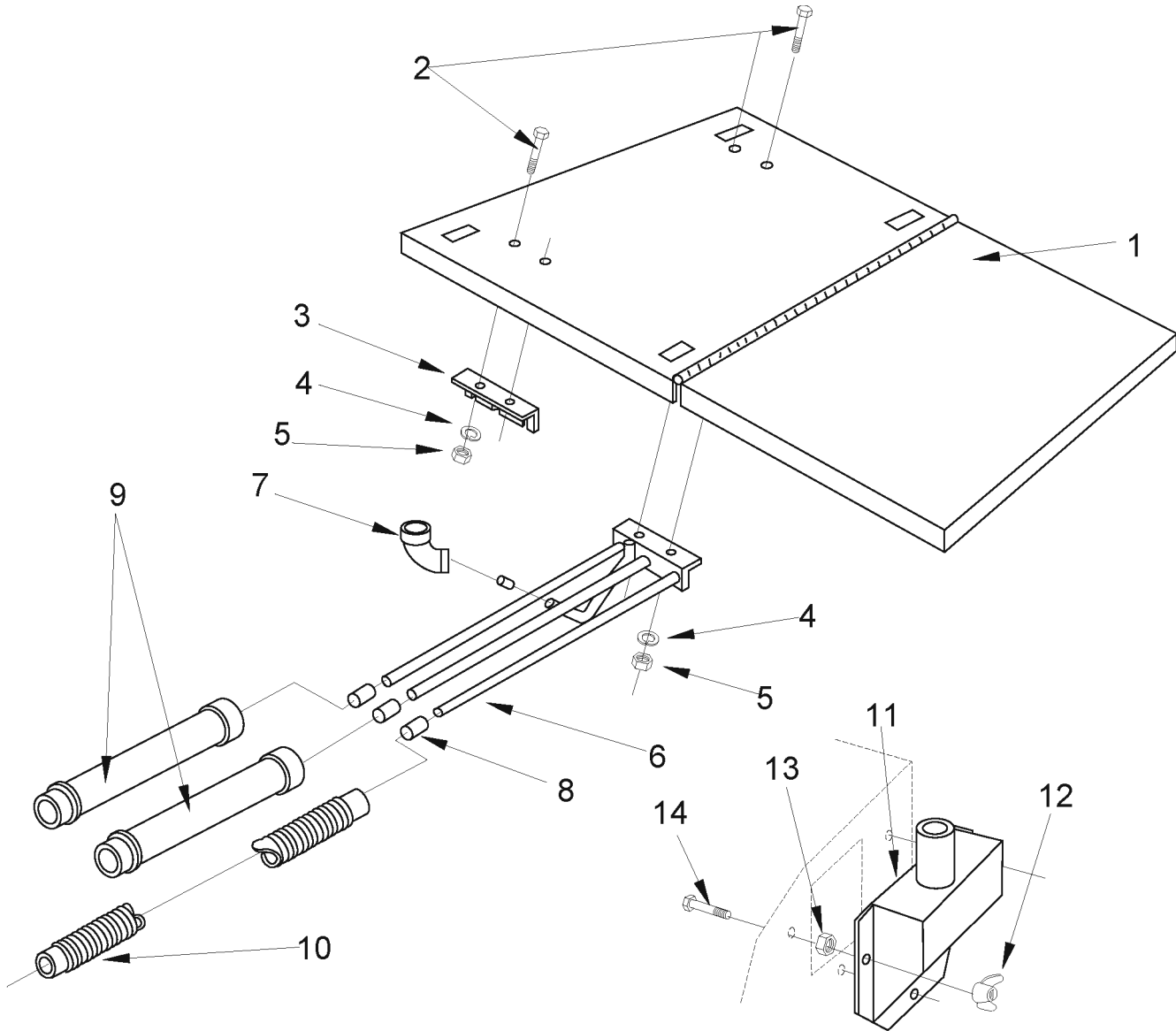
BACK-UP ALARM OPTION**3366XP, 4366XP****5**

Item	Ref. No.	Qty	Description
	0880-392	1	Back-Up Alarm Option
1	2-00-00624	2	Nut, Hex MS #6-32 x .312 x .109
2	7-82-00009	1	Mechanical Switch
3	2-00-05060	2	Screw, #6-32 x 1.250 RHM
4	2-00-01499	2	Lock Washer, Helical Spring #6 Med
5	2-00-00455	2	Flat Washer, .375 x .156 x .046
6	2-00-04808	2	Terminal, #8 Screw
7	8-32-09009	1	Backup Alarm
8	2-00-04282	1	Terminal, .31 Ring
9	2-00-04578	1	Terminal, Male Bullet
10	2-00-00213	2	Screw, 5/16 - 18 x .625 HHC
11	2-00-02303	2	Lock Washer, 5/16 Int.
12	2-00-00409	2	Flat Washer, .687 x .343 x .062
13	2-00-00585	2	Nut, Hex 5/16 - 18 x .500 x .265
14	8-11-00044	1	Boot
15	8-64-00008	1	Circuit Breaker
16	8-11-00015	1	Terminal
17	7-35-00013	1	Insulation

BLOWER ATTACHMENT OPTION

6

3366XP, 4366XP



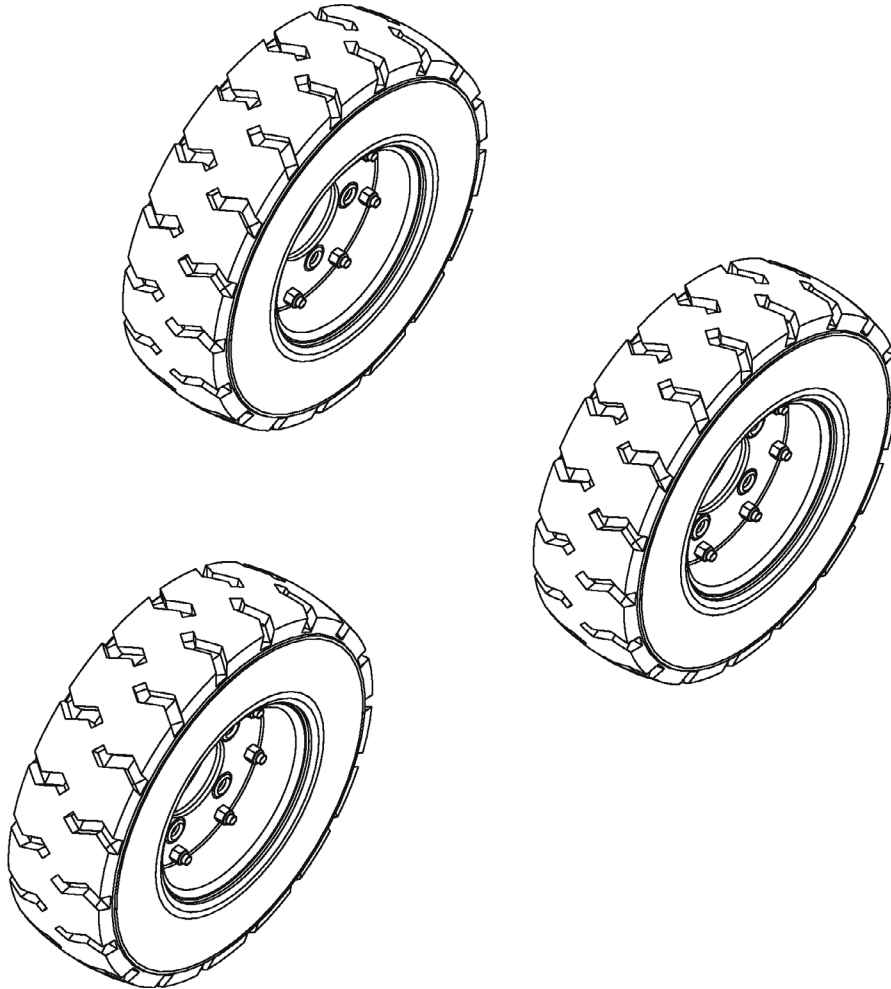
Item	Ref. No.	Qty	Description
	0880-454	1	Blower Attachment Option
1	8-16-07319	Ref.	Hopper Lid
2	2-00-01481	4	Screw, 5/16 - 18 x 1.000 RHM
3	8-08-00622	1	Latch Bracket
4	2-00-00530	4	Lock Washer, Helical Spring 5/16 Med
5	2-00-00585	4	Nut, Hex 5/16 - 18 x .500 x .265
6	8-08-00670	1	Blower Component Storage Bracket
7	8-21-07019	1	90° Elbow Adapter
8	8-11-00034	4	Cap
9	8-89-00002	2	Wand Section
10	8-33-02121	1	Hose
11	8-07-06018	1	Transition Box
12	2-00-00672	3	Wing Nut, 1/4 - 20
13	2-00-00594	3	Nut, Hex 1/4 - 20 x .437 x .218
14	2-00-02706	3	Screw, 1/4 - 20 x 1.000 HHM

TIRE OPTIONS

08-2

3366XP, 4366XP

7



Item	Ref. No.	Qty	Description
	0780-683	1	Foam Filled Tire Option
1	7-89-08273	1	Wheel Assy. - Pneumatic Foam-Fill - Rear
2	8-89-08056	2	Wheel Assy. - Pneumatic Foam-Fill - Front

Item	Ref. No.	Qty	Description
#	0780-684	1	Soft Shoe HP Tire Option
1	8-89-08060	1	Solid Pneumatic Soft Shoe Lug Tread - Rear
2	8-89-08055	2	Solid Pneumatic Soft Shoe Lug Tread - Front

Service Parts

Rim Assy.	8-65-05016(front); 8-65-05020 (rear)
Tire Only	8-85-06019 (front & rear)

= Revised or new since last update

Item	Ref. No.	Qty	Description
	0780-685	1	Soft Shoe HP Non-Marking Tire Option
1#	7-89-08269	1	Solid Pneumatic Non-Marking Lug Tread - Rear
2#	7-89-08268	2	Solid Pneumatic Non-Marking Lug Tread - Front

Service Parts

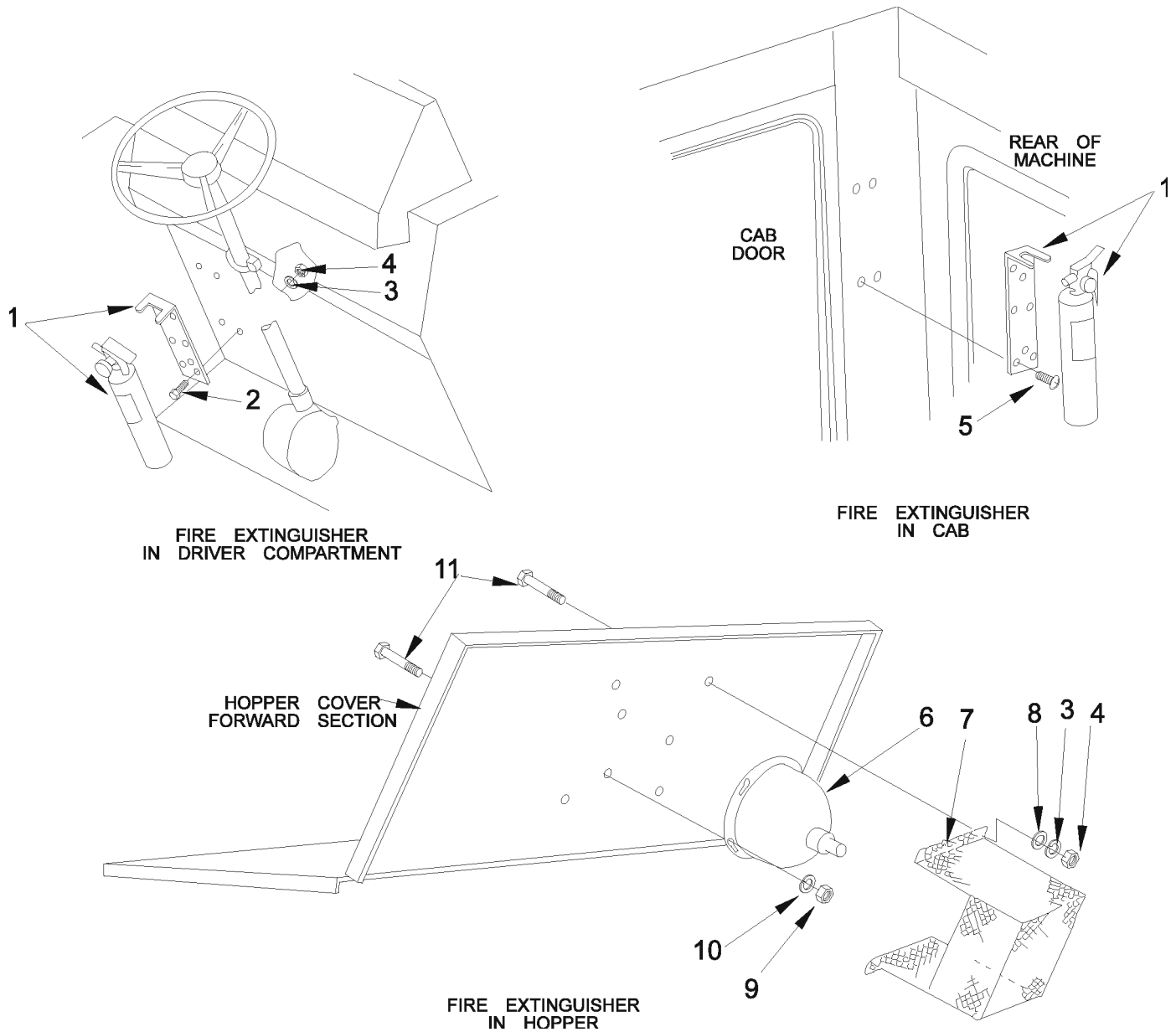
Rim Assy.	8-65-05016 (front); 8-65-05020 (rear)
Tire Only	7-85-06024 (front & rear)

= Revised or new since last update

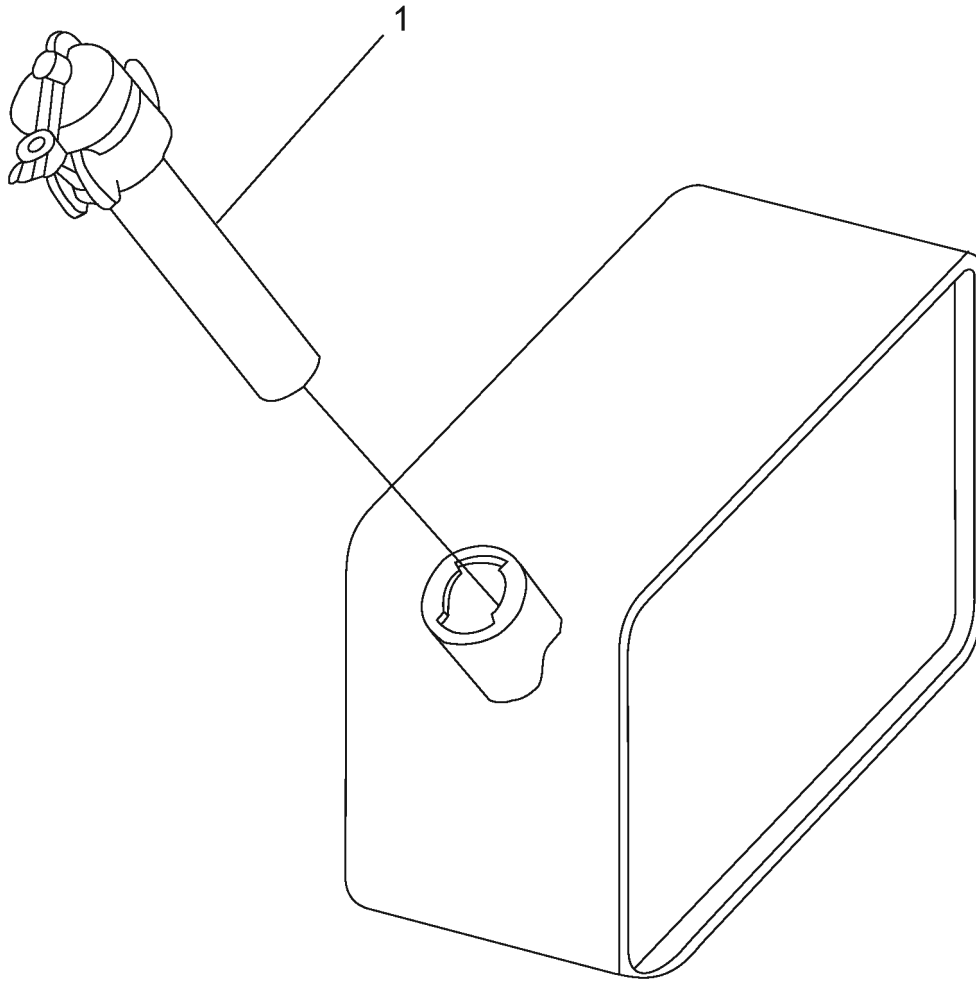
FIRE EXTINGUISHER OPTION

8

3366XP, 4366XP



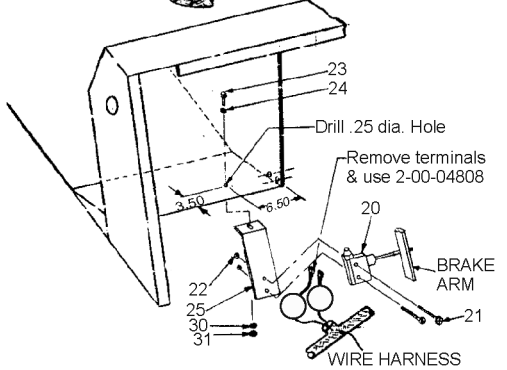
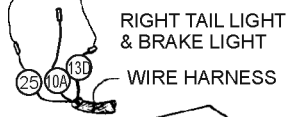
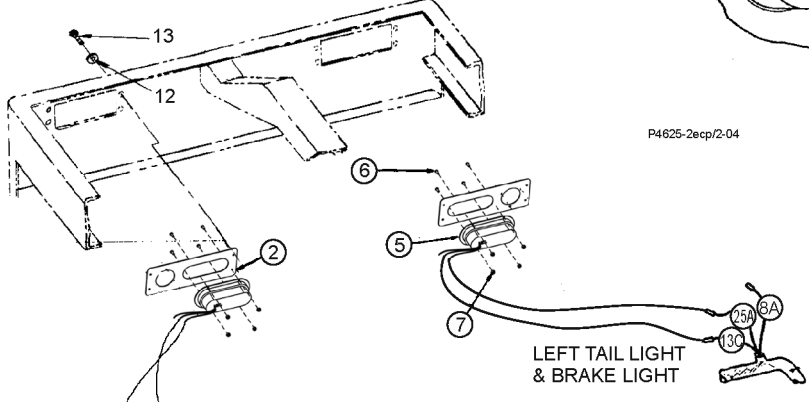
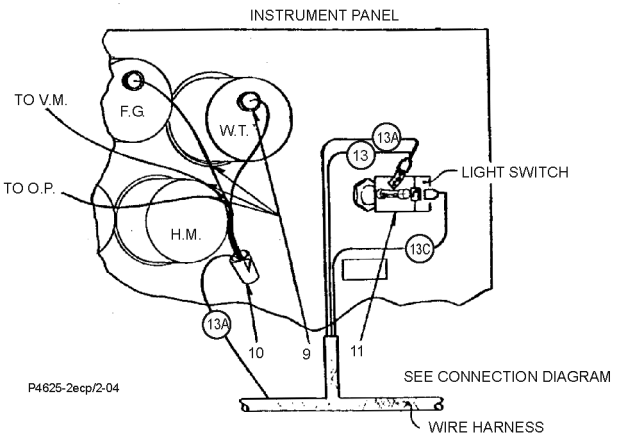
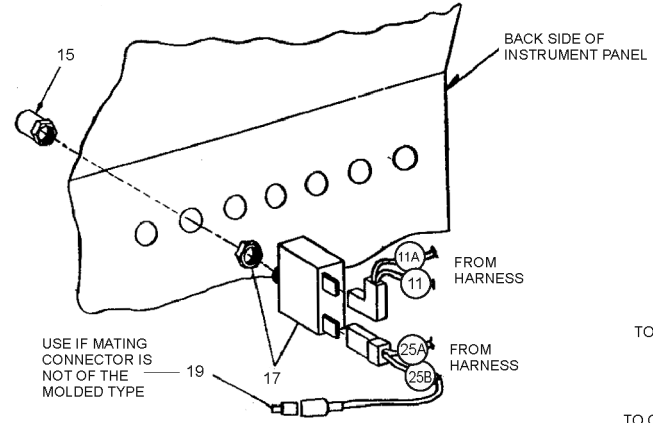
Item	Ref. No.	Qty	Description
	0880-639	1	Fire Extinguisher Option
1	8-83-04033	1	Fire Extinguisher
2	2-00-00221	4	Screw, 1/4 - 20 x .750 HHC
3	2-00-00518	8	Lock Washer, Helical Spring 1/4 Med
4	2-00-00594	8	Nut, Hex MS 1/4 - 20 x .437 x .187
5	2-95-01998	4	Screw, #1/4 - 10 x .750 T/F RH
6	8-83-04023	1	Fire Extinguisher (In Hopper)
7	8-30-05111	1	Fire Extinguisher Cover
8	2-00-00447	4	Flat Washer, 1.250 x .281 x .089
9	2-00-00641	3	Nut, Hex Fiber Insert 1/4 - 20
10	2-00-03702	3	Flat Washer, .625 x .281 x .062
11	2-00-00051	7	Screw, 1/4 - 20 x .750 RHM



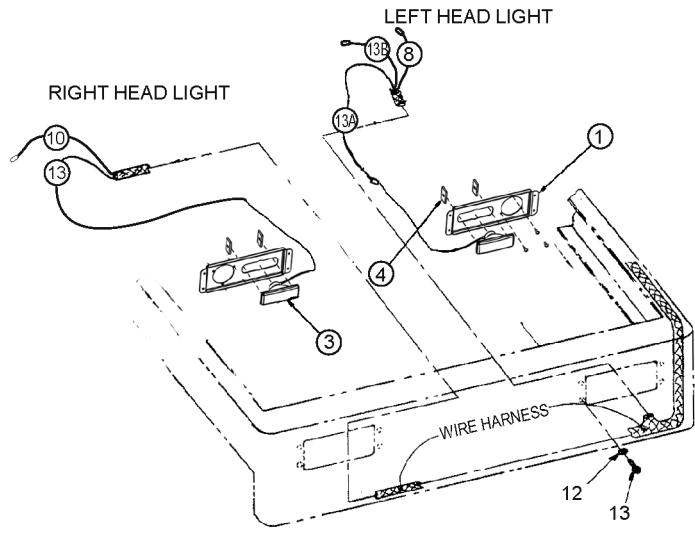
Item	Ref. No.	Qty	Description
1	8-11-00024	1	Protecto-Seal Gas Cap

LIGHTS OPTION
3366XP, 4366XP

10



NOTE: INSERT BRAKE SWITCH BEHIND BRAKE ARM AS SHOWN WITH BRAKES OFF, THEN ADJUST BRAKE SWITCH IN SLOTS UNTIL BRAKE LIGHTS GO OUT AND STAY OUT. TEST SEVERAL TIMES TO MAKE SURE BRAKE LIGHTS COME ON WHEN BRAKES ARE APPLIED AND GO OFF WHEN BRAKES ARE RELEASED.



LIGHTS OPTION**3366XP, 4366XP****11**

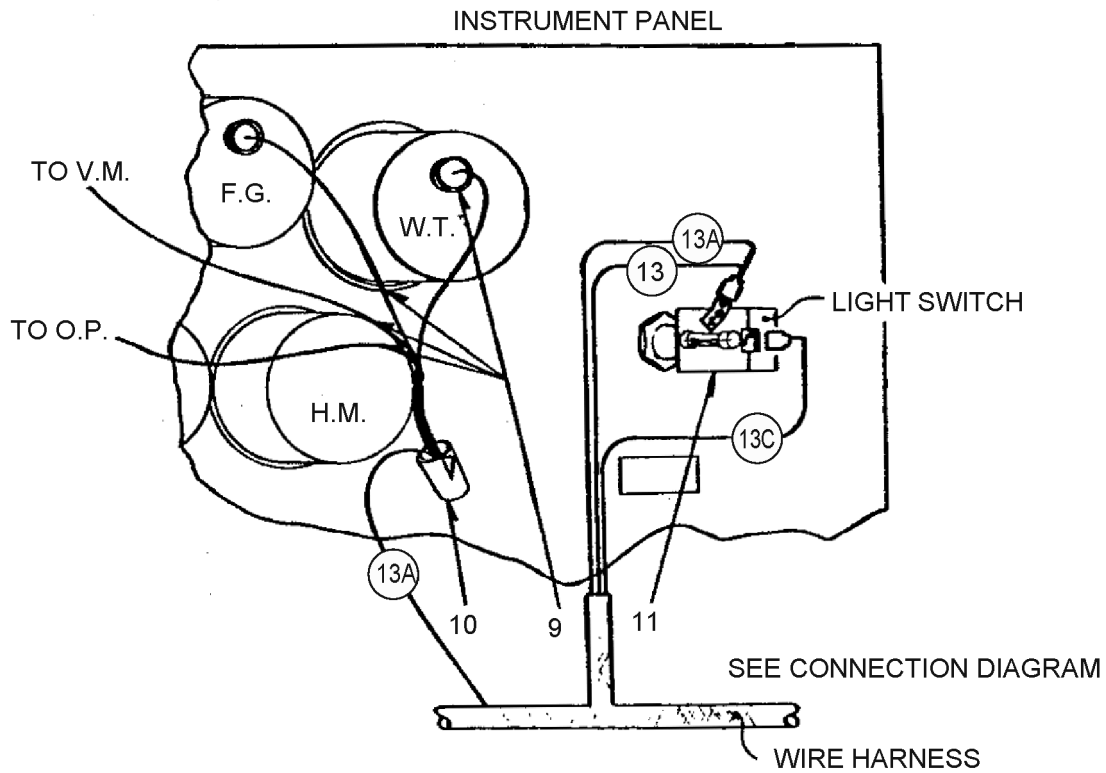
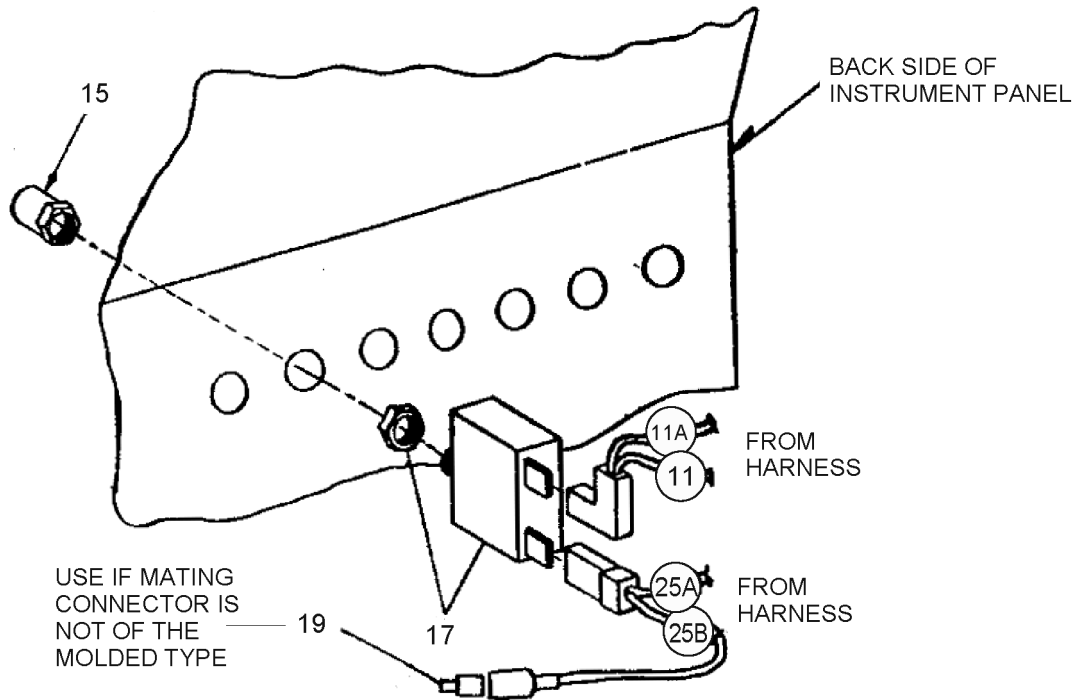
Item	Ref. No.	Qty	Description
	0880-354	1	Light Package Option (head, tail, instrument &brake lights)
	0880-351	1	Light Package Option (#1-7, 9-15, 32 / head, tail & instrument lights)
1	7-08-01178	2	Bracket, Light
2	7-08-01173	2	Bracket, Rear Light
3	7-40-05046	1	Headlight, 12VDC, 55W
4	7-08-01174	4	Bracket, Headlight Mount
5	7-40-05047	2	Light, Tail/Brake/Turn (Red)
6	2-00-00049	20	Screw, 10-24 x .50 RHM
7	2-00-01246	20	Nut, #10-24 Elastic Stop
9	8-40-05030	4	Light, Instrument
10	2-00-04588	1	Nut, Wire
11	8-82-00027	1	Switch, Push/Pull Light
12	2-00-00501	16	Washer, 1/4 Int. Lock
13	2-00-04876	16	Screw, 1/4-20 x .50 RHS Nylok
14	2-00-04578	4	Plug, Male Bullet
15	8-90-07358	4	Wire (Ground for Lights)
17	8-64-00008	1	Circuit Breaker (15 amp)
18	8-11-00044	1	Boot
19	8-11-00015	1	Terminal
20	8-82-00058	1	Switch, Brake
21	2-00-00090	2	Screw, #8-32 x 1.50 RH
22	2-00-01372	2	Nut, #8-32 Hex
23	2-00-00221	1	Screw, 1/4-20 x .75 HHM
24	2-00-03702	1	Flat Washer, 1/4
25	8-08-00865	1	Bracket, Brake Switch Mount
30	2-00-00518	1	Lock Washer, 1/4 Helical Spring
31	2-00-00594	1	Nut, 1/4-20 Hex
32	2-00-05261	16	Insert (not shown)

LIGHTS OPTION (HEAD, TAIL, INSTRUMENTS, TURN, 4-WAY FLASHERS)

3366XP, 4366XP

13

Item	Ref. No.	Qty	Description
	0880-355	1	Light Package Option (head, tail, instrument, turn lights & 4-way flashers)
1	7-08-01178	2	Bracket, Light
2	7-08-01173	2	Bracket, Rear Light
3	7-40-05046	1	Headlight, 12VDC, 55W
4	7-08-01174	4	Bracket, Headlight Mount
5	7-40-05047	2	Light, Tail/Brake/Turn (Red)
6	2-00-00049	20	Screw, 10-24 x .50 RHM
7	2-00-01246	20	Nut, #10-24 Elastic Stop
8	7-40-05048	4	Light, Side Marker (Amber)
9	8-40-05030	4	Light, Instrument
10	2-00-04588	1	Nut, Wire
11	8-82-00027	1	Switch, Push/Pull Light
12	2-00-00501	16	Washer, 1/4 Int. Lock
13	2-00-04876	16	Screw, 1/4-20 x .50 RHS Nylok
14	2-00-04578	4	Plug, Male Bullet
15	8-90-07358	4	Wire (Ground for Lights)
16	0775-294	2	Resistor Assembly
17	8-64-00008	1	Circuit Breaker (15 amp)
18	8-11-00044	1	Boot
19	8-11-00015	1	Terminal
20	8-82-00058	1	Switch, Brake
21	2-00-00090	2	Screw, #8-32 x 1.50 RH
22	2-00-01372	2	Nut, #8-32 Hex
23	2-00-00221	1	Screw, 1/4-20 x .75 HHM
24	2-00-03702	1	Flat Washer, 1/4
25	8-08-00865	1	Bracket, Brake Switch Mount
26	2-00-01994	1	Screw, 8-15 x .75 Sht. Mtl.
27	2-00-01128	2	Terminal, Butt Splice
28	8-82-00025	1	Switch, Turn Signal
29	2-00-03197	1	Washer, Rubber
30	2-00-00518	1	Lock Washer, 1/4 Helical Spring
31	2-00-00594	1	Nut, 1/4-20 Hex
32	2-00-05261	16	Insert (not shown)

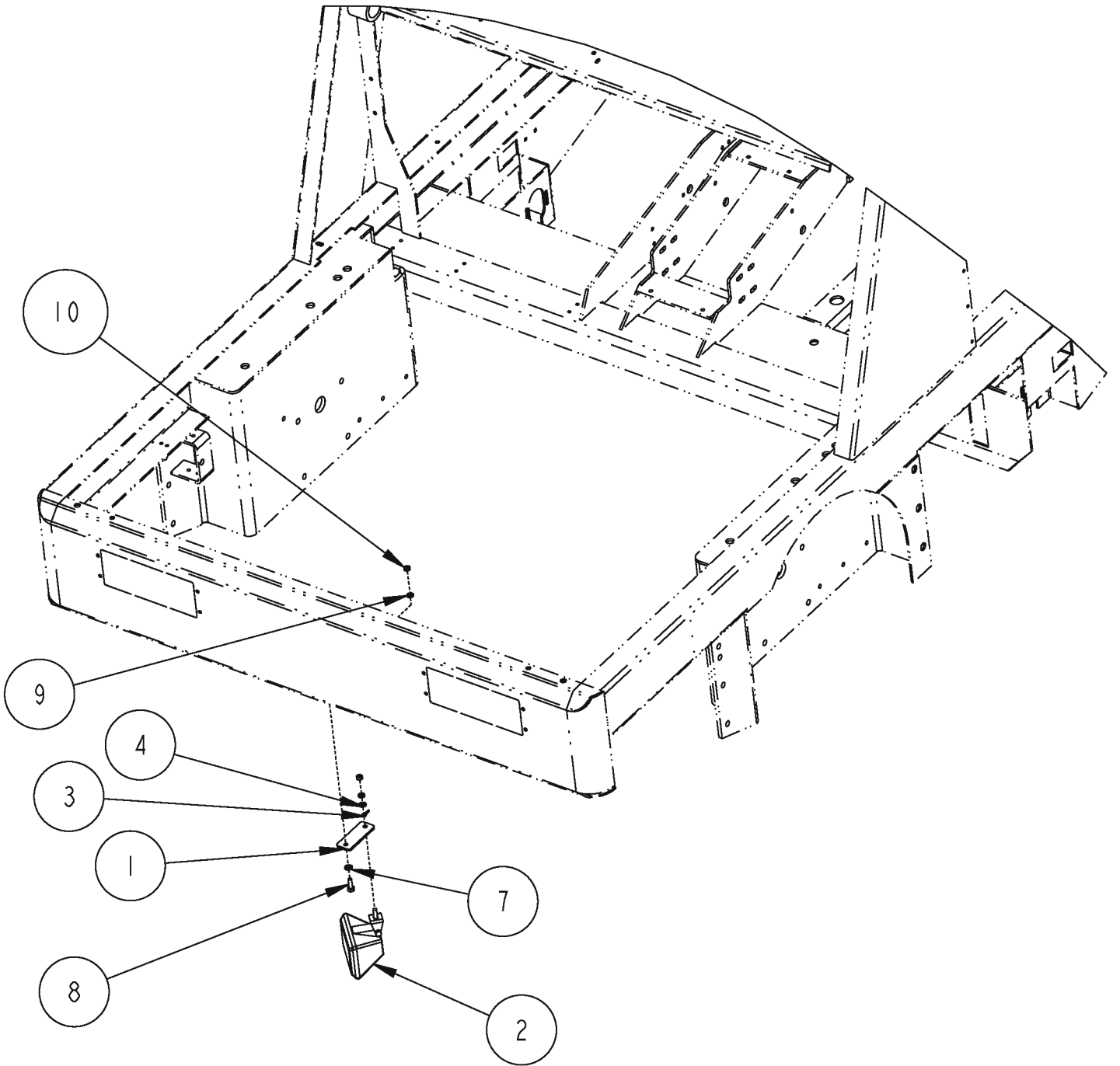


LIGHTS OPTION (HEAD, TAIL, INSTRUMENTS, TURN, 4-WAY FLASHERS)

3366XP, 4366XP

15

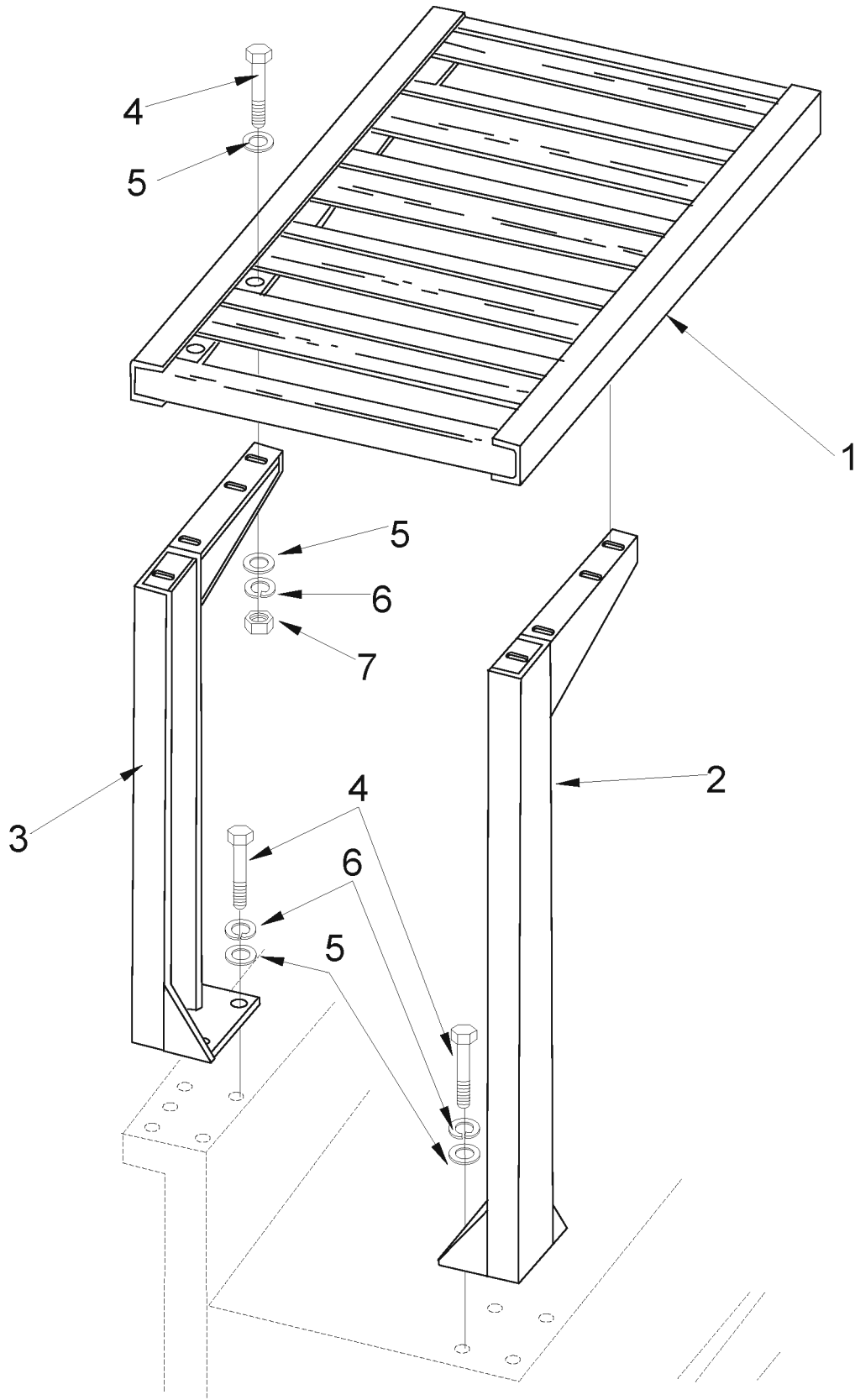
Item	Ref. No.	Qty	Description
	0880-355	1	Light Package Option (head, tail, instrument, turn lights & 4-way flashers)
1	7-08-01178	2	Bracket, Light
2	7-08-01173	2	Bracket, Rear Light
3	7-40-05046	1	Headlight, 12VDC, 55W
4	7-08-01174	4	Bracket, Headlight Mount
5	7-40-05047	2	Light, Tail/Brake/Turn (Red)
6	2-00-00049	20	Screw, 10-24 x .50 RHM
7	2-00-01246	20	Nut, #10-24 Elastic Stop
8	7-40-05048	4	Light, Side Marker (Amber)
9	8-40-05030	4	Light, Instrument
10	2-00-04588	1	Nut, Wire
11	8-82-00027	1	Switch, Push/Pull Light
12	2-00-00501	16	Washer, 1/4 Int. Lock
13	2-00-04876	16	Screw, 1/4-20 x .50 RHS Nylok
14	2-00-04578	4	Plug, Male Bullet
15	8-90-07358	4	Wire (Ground for Lights)
16	0795-294	2	Resistor Assembly
17	8-64-00008	1	Circuit Breaker (15 amp)
18	8-11-00044	1	Boot
19	8-11-00015	1	Terminal
20	8-82-00058	1	Switch, Brake
21	2-00-00090	2	Screw, #8-32 x 1.50 RH
22	2-00-01372	2	Nut, #8-32 Hex
23	2-00-00221	1	Screw, 1/4-20 x .75 HHM
24	2-00-03702	1	Flat Washer, 1/4
25	8-08-00865	1	Bracket, Brake Switch Mount
26	2-00-01994	1	Screw, 8-15 x .75 Sht. Mtl.
27	2-00-01128	2	Terminal, Butt Splice
28	8-82-00025	1	Switch, Turn Signal
29	2-00-03197	1	Washer, Rubber
30	2-00-00518	1	Lock Washer, 1/4 Helical Spring
31	2-00-00594	1	Nut, 1/4-20 Hex
32	2-00-05261	16	Insert



CURB LIGHT OPTION**3366XP, 4366XP****17**

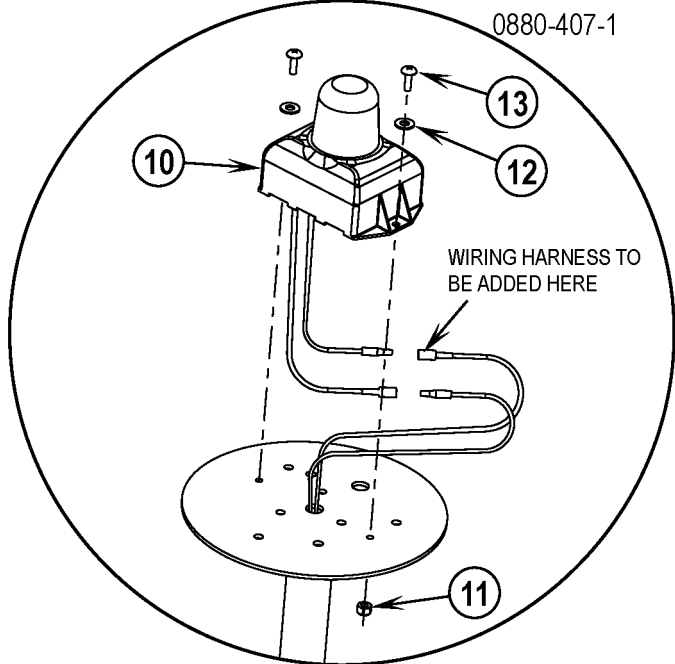
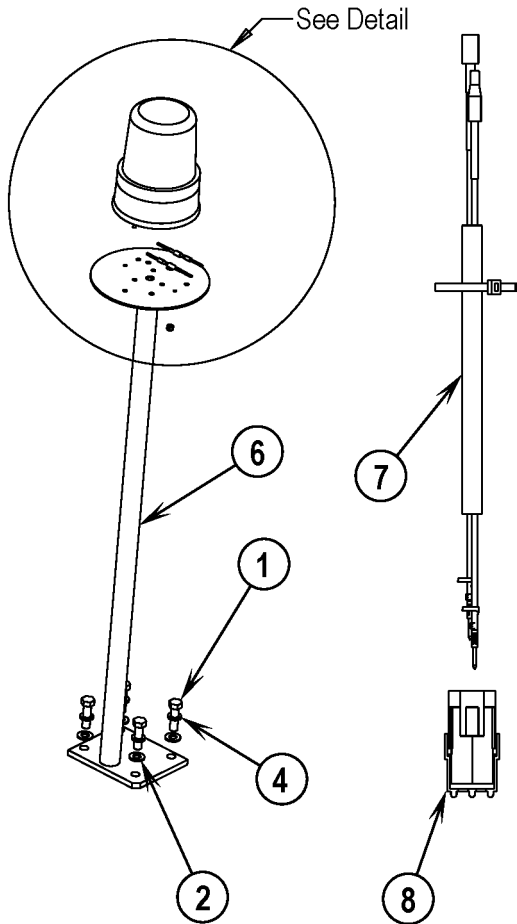
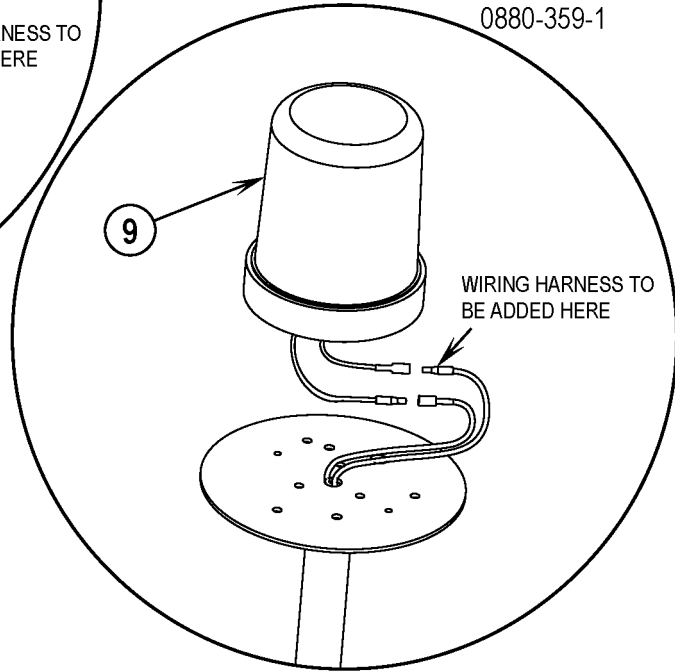
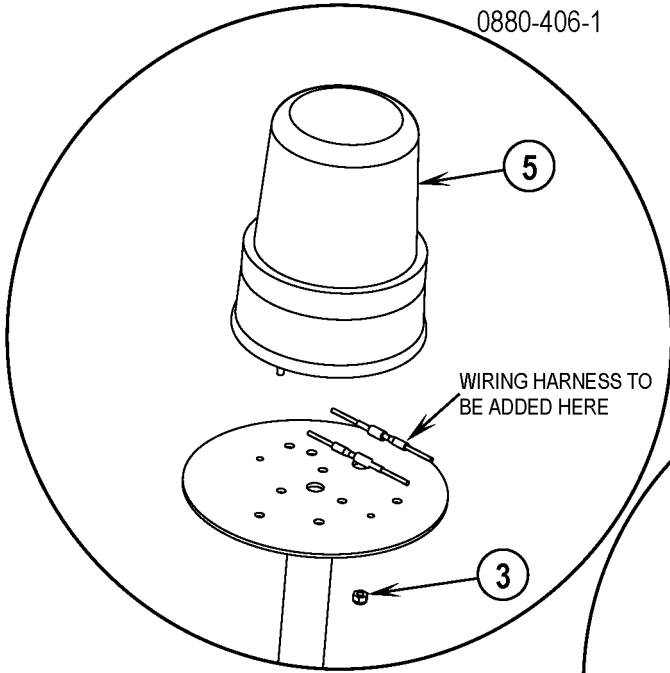
Item	Ref. No.	Qty	Description
	0880-361	1	Curb Light Option NOTE 1
1	7-08-01286	1	Bracket, Side Broom Light
2	8-40-05049	1	Light
3	2-00-04282	1	Ring Terminal
4	2-00-02303	1	Lock Washer, 5/16 HS Med.
5	2-00-04578	1	Terminal (.156 Male)
6	8-90-07358	1	Ground Wire
7	2-00-00409	1	Flat Washer, .687 x .344 x .062
8	2-00-02708	1	Screw, 5/16-18 x 1.0 Hex Head
9	2-00-00530	1	Lock Washer, 5/16
10	2-00-00585	1	Nut, 5/16-18 Hex

NOTE 1: HEADLIGHTS REQUIRED TO ACCOMPANY THIS OPTION



OVERHEAD GUARD OPTION**3366XP, 4366XP****19**

Item	Ref. No.	Qty	Description
	0880-352	1	Overhead Guard Option
1	7-30-05086	1	Guard
2	8-30-05131	1	Right Hand Upright Guard
3	8-30-05130	1	Left Hand Upright Guard
4	2-00-00240	16	Screw, 1/2-13 x1.250 HHC
5	2-00-00420	4	Flat Washer, 1.000 x .515 x .0622
6	2-00-02312	16	Lock Washer, Helical Spring 1/2 Med
7	2-00-00596	8	Nut, Hex 1/2-13 x.750 x .515



WARNING LIGHT OPTIONS (W/O OVERHEAD GUARD)

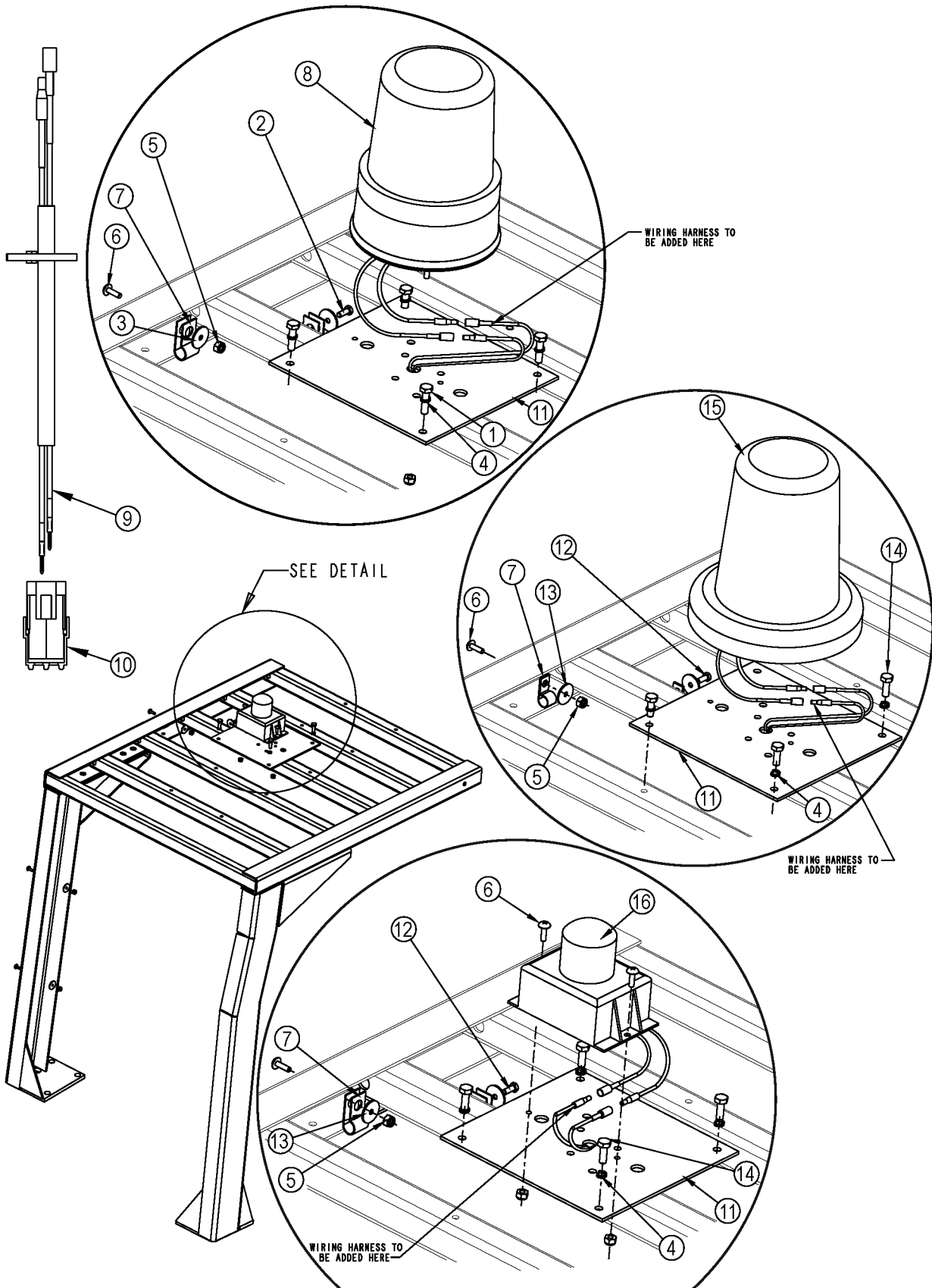
07-6

3366XP, 4366XP**21**

Item	Ref. No.	Qty	Description
	0880-406-1	1	Rotating Light Option
1	2-00-00241	4	Bolt 1/2-13 X 1-3/4 LG
2	2-00-00405	4	Flat Washer, 1.063 x .531 x .094
3	2-00-01246	2	Nut-#10-24 Elastic Stop Nut
4	2-00-02312	4	Washer, 1/2" Lock
5	8-40-05039	1	Warning Light, Amber Revolving
6	8-81-00145	1	Pole, Light
7	56109254	1	Harness, Warning Light
8	56462360	1	Connector, 2-Way

Item	Ref. No.	Qty	Description
	0880-359-1	1	Flashing Light Option
1	2-00-00241	4	Bolt 1/2-13 X 1-3/4 Lg
2	2-00-00405	4	Flat Washer, 1.063 x .531 x .094
4	2-00-02312	4	Washer, 1/2" Lock
6	8-81-00145	1	Pole, Light
7	56109254	1	Harness, Warning Light
8	56462360	1	Connector, 2-Way
9	8-40-05041	1	Light, Emergency, Amber

Item	Ref. No.	Qty	Description
	0880-407-1	1	Strobe Light Option
1	2-00-00241	4	Bolt 1/2-13 X 1-3/4 LG
2	2-00-00405	4	Flat Washer, 1.063 x .531 x .094
4	2-00-02312	4	Washer, 1/2" Lock
6	8-81-00145	1	Pole, Light
7	56109254	1	Harness, Warning Light
8	56462360	1	Connector, 2-Way
10	8-40-05036	1	Strobe - Amber (12 to 80 VDC)
11	56002836	2	Nut, Hex Nyl Loc SS 10-24
12	56002919	2	Wsh, Fit STD SS #10
13	2-00-03062	2	Screw, #10-24 x 5/8 LG



WARNING LIGHT OPTIONS (W/ OVERHEAD GUARD)

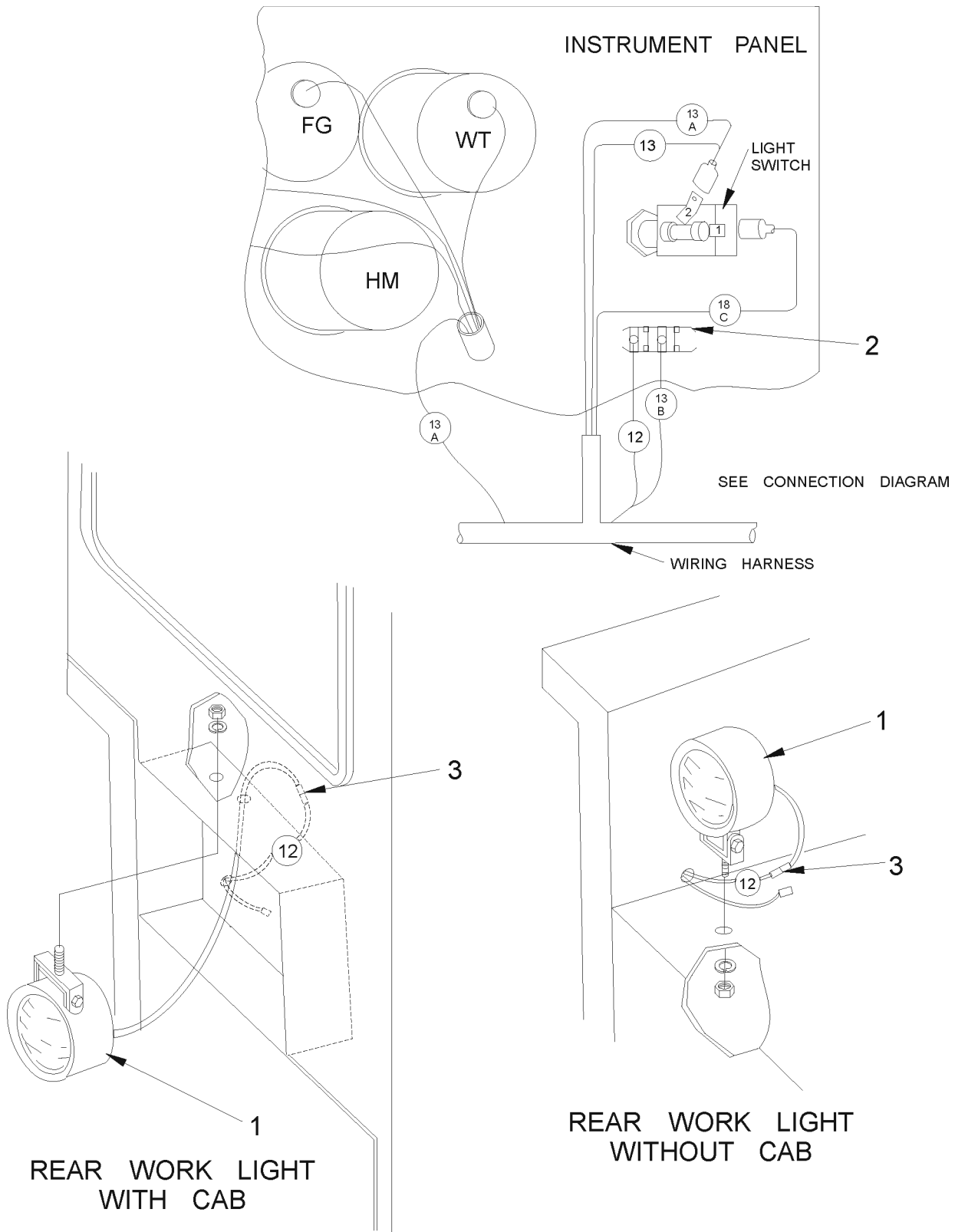
07-6

3366XP, 4366XP**23**

Item	Ref. No.	Qty	Description
	0880-408-1	1	Rotating Light Option
1	56002883	4	Scr, Hex SS 1/4-20 x 1.00
2	56009039	1	Scr, Hex Thd Form 10-24 X .50
3	56009096	4	Wsh, Flt .193 X .875 X .060
4	2-00-00548	4	1/4" Lock Washer
5	2-00-01246	5	Nut-#10-24 Elastic Stop Nut
6	2-00-03062	3	Screw, #10-24 X 5/8 LG
7	2-00-04602	4	Clamp
8	8-40-05039	1	Warning Light, Amber Revolving
9	56109253	1	Harness, Warning Light
10	56462360	1	Connector, 2-Way
11	8-58-05228	1	Plate, Flasher

Item	Ref. No.	Qty	Description
	0880-360-1	1	Flashing Light Option
4	2-00-00548	4	1/4" Lock Washer
5	2-00-01246	3	Nut-#10-24 Elastic Stop Nut
6	2-00-03062	3	Screw, #10-24 X 5/8 LG
7	2-00-04602	4	Clamp
9	56109253	1	Harness, Warning Light
10	56462360	1	Connector, 2-Way
11	8-58-05228	1	Plate, Flasher
12	56009039	1	Scr, Hex Thd Form 10-24 X .50
13	56009096	4	Wsh, Flt .193 X .875 X .060
14	2-00-00221	4	Bolt-Hex Head, Finished, 1/4-20x3/4 LG
15	8-40-05041	1	Light, Emergency, Amber

Item	Ref. No.	Qty	Description
	0880-409-1	1	Strobe Light Option
4	2-00-00548	4	1/4" Lock Washer
5	2-00-01246	5	Nut-#10-24 Elastic Stop Nut
6	2-00-03062	5	Screw, #10-24 X 5/8 LG
7	2-00-04602	4	Clamp
9	56109253	1	Harness, Warning Light
10	56462360	1	Connector, 2-Way
11	8-58-05228	1	Plate, Flasher
12	56009039	1	Scr, Hex Thd Form 10-24 X .50
13	56009096	4	Wsh, Flt .193 X .875 X .060
14	2-00-00221	4	Bolt-Hex Head, Finished, 1/4-20x3/4 LG
16	8-40-05036	1	Strobe-Amber (12 to 80 VDC)



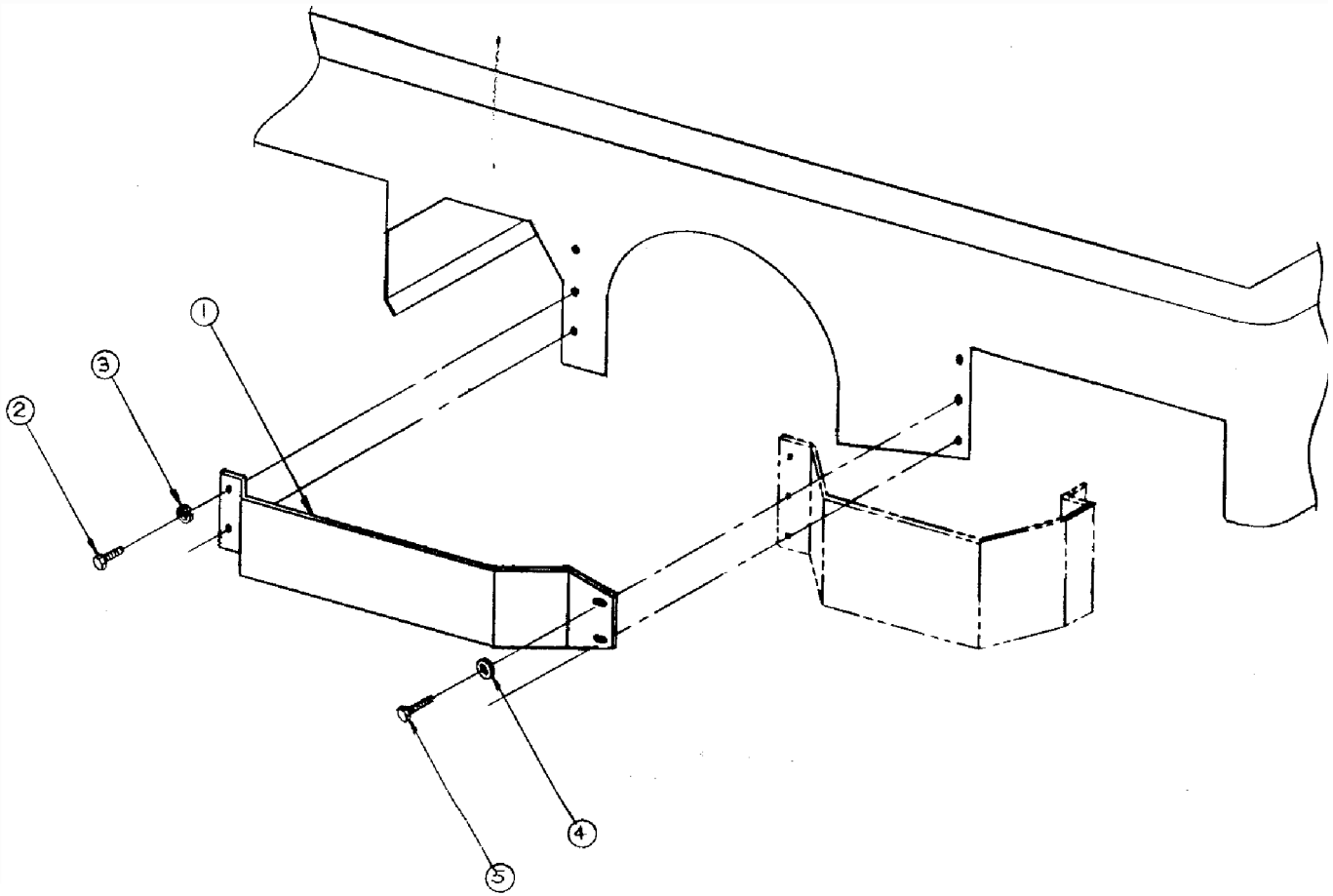
REAR WORK LIGHT OPTION**3366XP, 4366XP****25**

Item	Ref. No.	Qty	Description
	0880-390	1	Rear Work Light Option
1	8-40-05049	1	Rear Work Light
2	8-82-00044	1	Switch, SPST on/off
3	2-00-04578	1	Terminal, Male Bullet

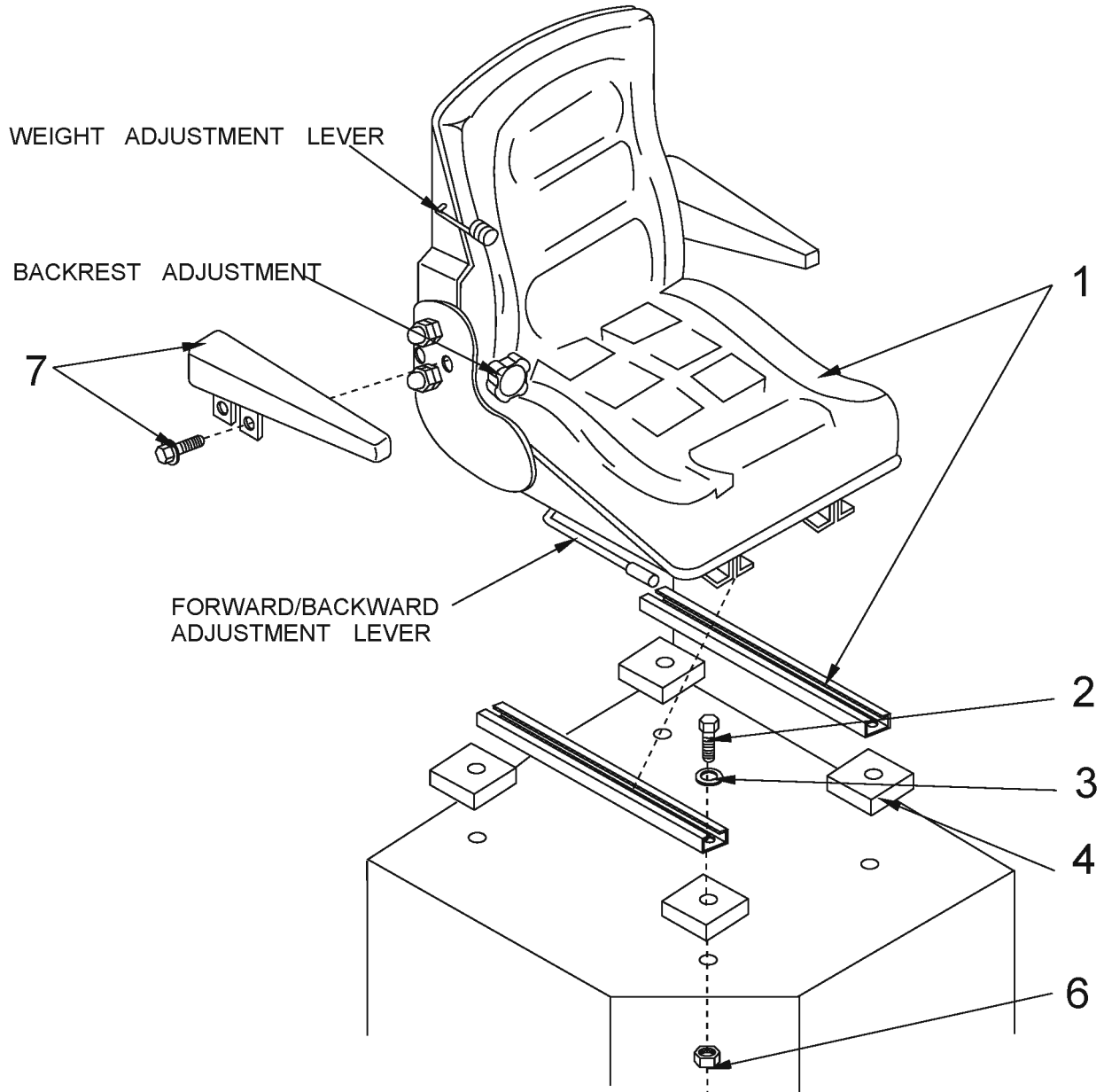
FRONT WHEEL GUARDS OPTION

26

3366XP, 4366XP



Item	Ref. No.	Qty	Description
	0880-528	1	Front Wheel Guards Option
1	8-30-05146	2	Guard, Front Wheel
2	2-00-00240	4	Screw, 1/2-13 x 1.25 HHC
3	2-00-02312	4	Lock Washer, 1/2 Helical Spring
4	2-00-04159	4	Flat Washer, 9/16 ID
6	2-00-00241	4	Screw, 1/2-13 x 1.75 HHC

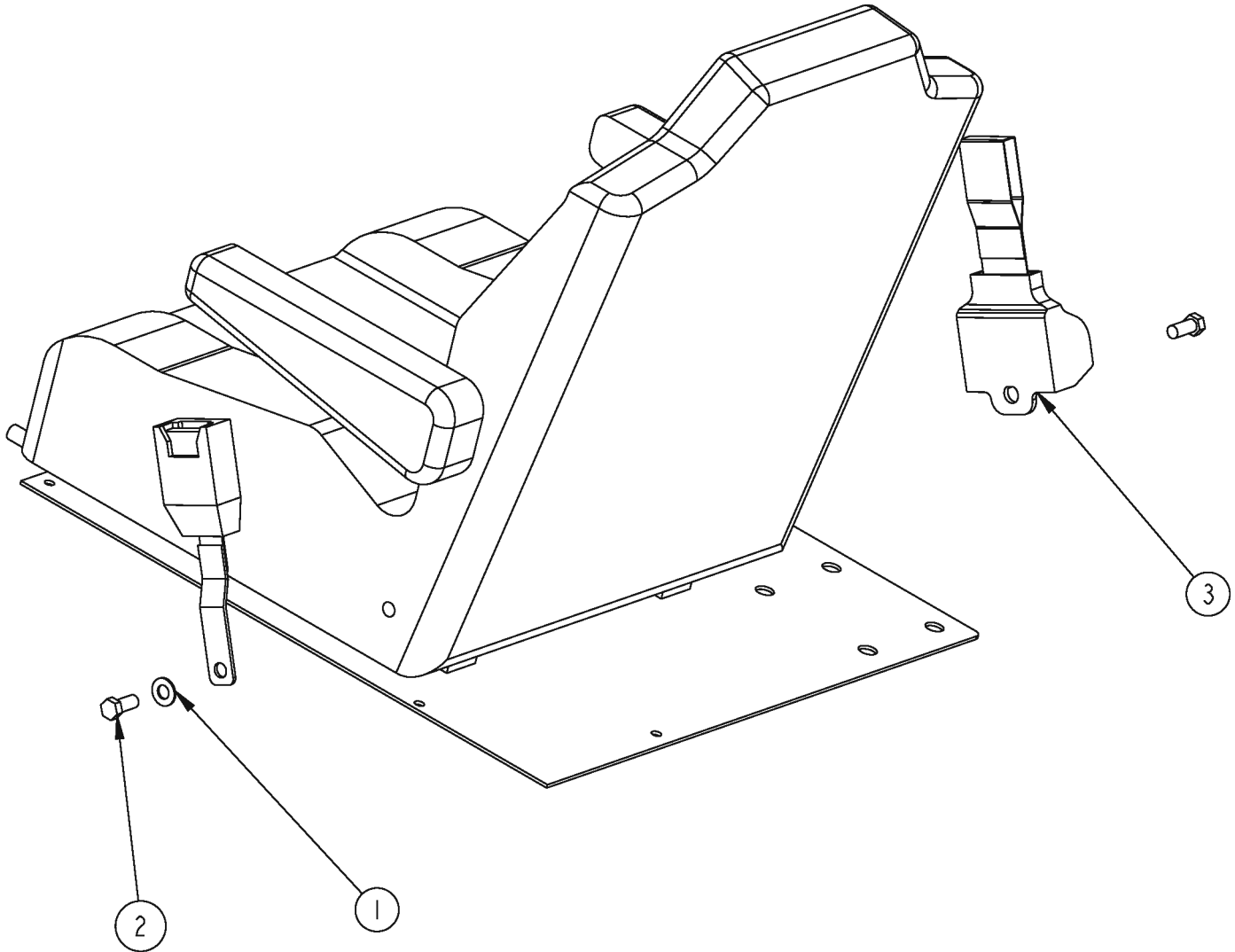


Item	Ref. No.	Qty	Description
	0880-474	1	Suspension Seat Option
1	8-69-00019	1	Seat without armrests
2	2-00-00225	4	Screw, 5/16-18 x 1.500 HHC
3	2-00-00409	4	Flat Washer, .750 x .343 x .062
4	8-71-00016	4	Shim Block
6	2-00-00585	4	Nut, 5/16-18 x .500 x .265
7	8-03-04320	1	Armrest Kit (Includes both Armrests)

RETRACTABLE SEAT BELT OPTION

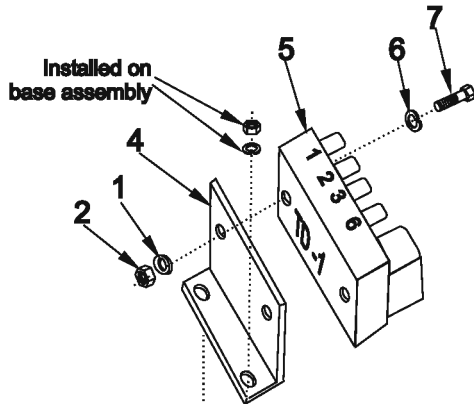
28

3366XP, 4366XP

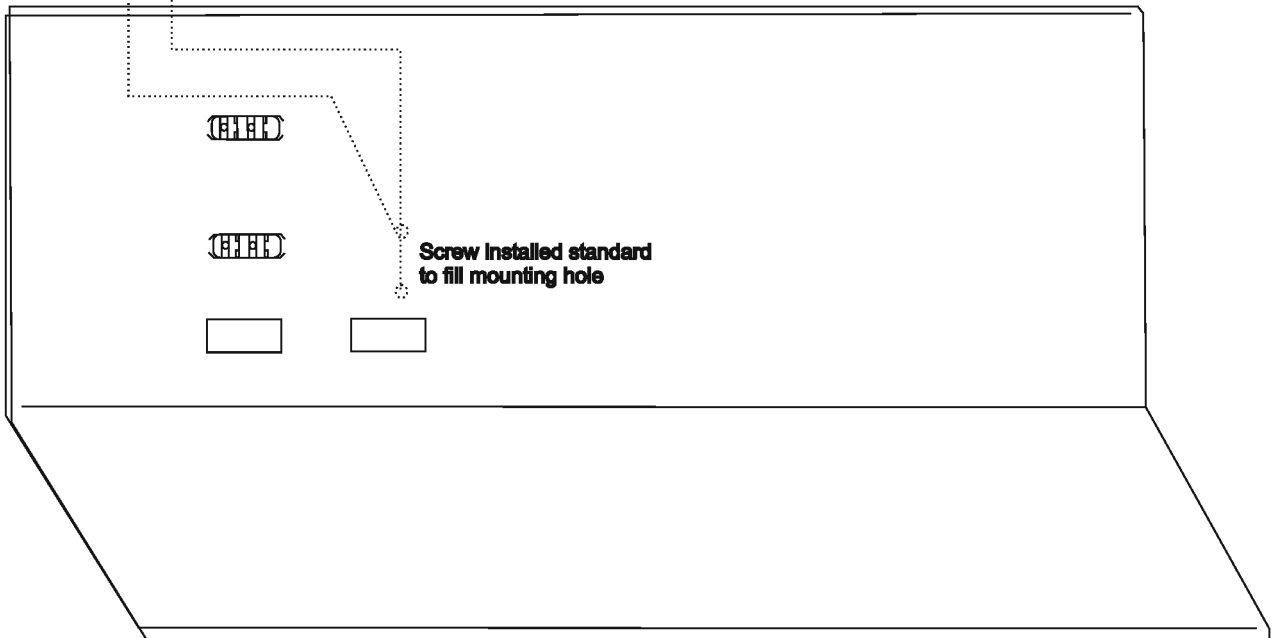


Item	Ref. No.	Qty	Description
	0880-720	1	Retractable Seat Belt Option
1	2-00-00415	1	Washer, .94 ID x .47 OD x .062
2	2-00-03334	2	Screw, 7/16-20 x .75
3	2-00-06038	1	Retractable Seat Belt

Timed filter shaker Option only



Refer to Instrument panel connection diagram for assembly instructions. (Wires existing in standard assembly)

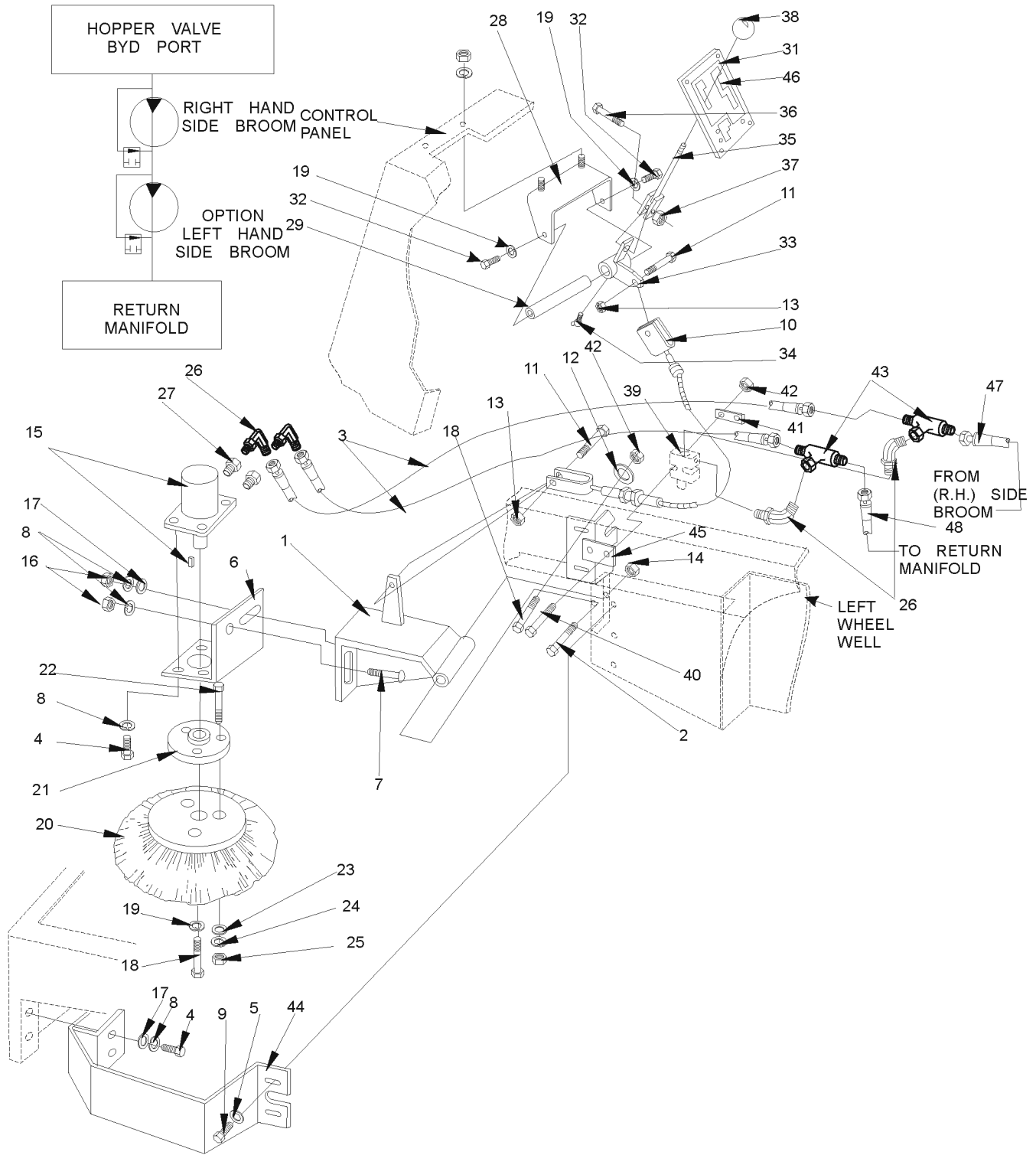


Item	Ref. No.	Qty	Description
	0880-443	1	Timed Filter Shaker Motors Option
1	2-00-01499	2	Lock Washer, #6
2	2-00-00605	2	Nut, MS #10-24 x .375 x .125 Hex
3	2-00-00519	2	Lock Washer, #10 Med. Helical Spring
4	8-08-00748	1	Bracket, Timer Relay
5	8-64-05011	1	Timer Relay (20-second delay)
6	2-00-00455	2	Flat Washer, .375 x .156 x .047
7	2-00-00067	2	Screw, #6-32 x 1.0 RHM

LEFT SIDE BROOM OPTION

30

3366XP, 4366XP



LEFT SIDE BROOM OPTION

08-2

3366XP, 4366XP

31

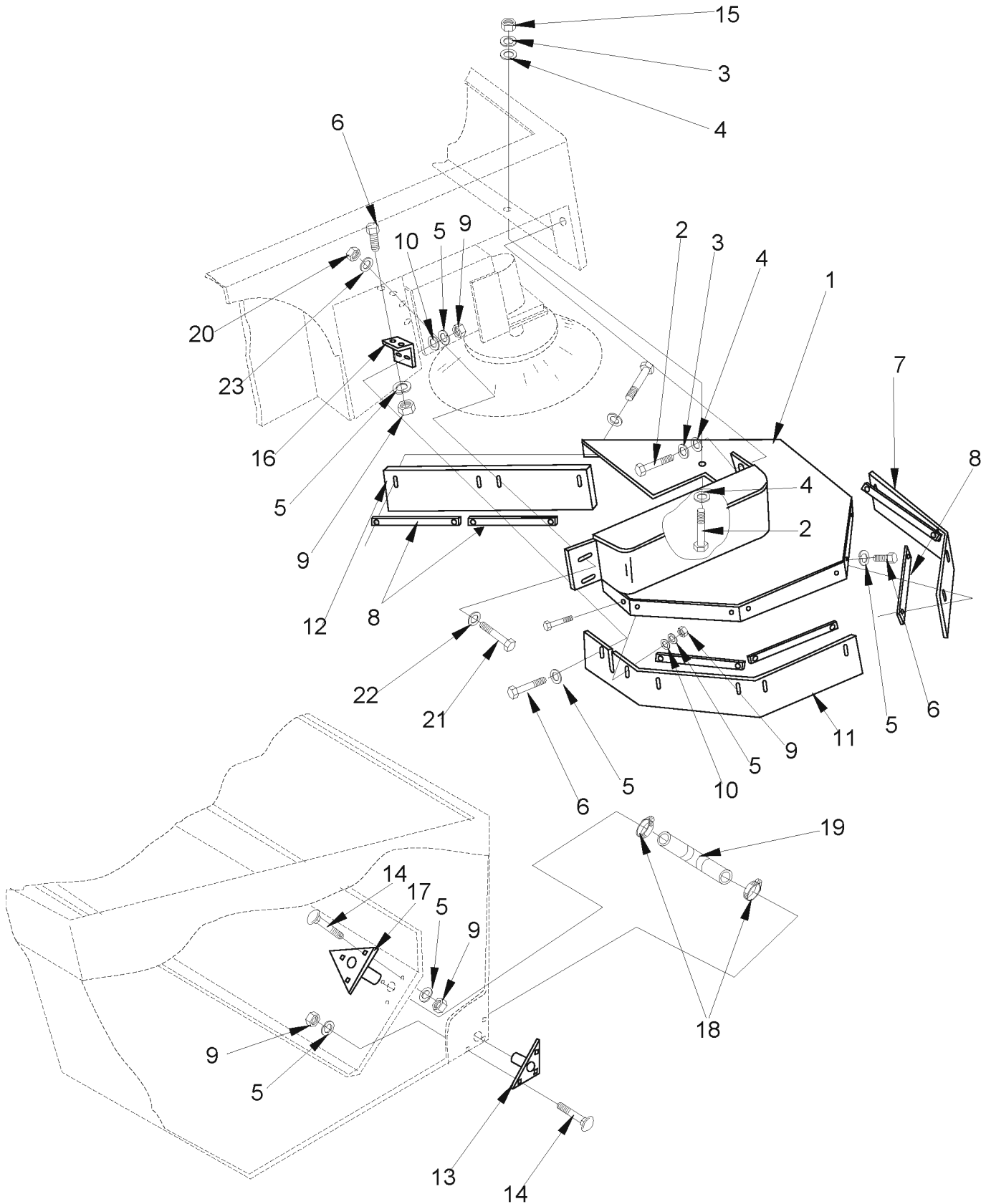
Item	Ref. No.	Qty	Description
	0880-514	1	Left Side Broom Option
1	8-03-04284	1	Side Broom Arm Weldment L.H.)
2	2-00-04914	1	Screw, 1/2 - 13 x 4.250 HHC
3	8-33-02181	2	Hose, Hydraulic ORS 4 Str. Ends 18"
4	2-00-00233	8	Screw, 3/8 - 16 x 1.000 HHC
5	2-00-04159	5	Flat Washer, 1/2
6	8-08-00740	1	Side Broom Arm Bracket L.H.
7	2-00-05187	2	Bolt, Carriage 3/8-16 x 1.25
8	2-00-02310	10	Lock Washer, Helical Spring 3/8 Med
9	2-00-01254	4	Screw, 1/2-13 x 1.500 HHC
10	8-10-00030	1	Cable, L.H. Side Broom
11	2-00-02708	2	Screw, 5/16-18 x 1.000 HHC
12	2-00-00407	3	Flat Washer, .562 x .265 x .062
13	2-00-00644	2	Nut, Hex Fiber Insert 5/16 - 18
14	2-00-04936	2	Nut, Hex Fiber Insert 1/2 - 13
15	0882-047	1	Side Broom Motor,
15	2-00-00722	1	Woodruff Key, 1/4
16	2-00-00584	2	Nut, Hex 3/8-16
17	2-00-04801	3	Flat Washer, 3/8
18	2-00-01490	4	Screw, 1/4 - 20 x .875 HHC
19	2-00-00518	1	Lock Washer, Helical Spring 1/4 Med
20	8-08-03211	1	Side Broom
21	8-25-06008	1	Side Broom Flange
22	2-00-00211	3	Screw, 5/16 - 18 x 1.750 HHC
23	2-00-00409	3	Flat Washer, 5/16
24	2-00-00530	3	Lock Washer, Helical Spring 5/16 Med
25	2-00-00585	3	Nut, Hex 5/16 - 18 x .500 x .265
26	2-00-04926	4	ORFS 90° Elbow, 9/16-18
27	2-00-04915	2	ORFS Boss Reducer, 7/8-14 to 9/16-18
28	8-08-00646	Ref	Side Broom Pivot Bracket
29	8-70-05285	Ref	Shaft - Broom Pivot L.H.
30	2-00-00221	Ref	Screw, 1/4 - 20 x .750 HHC
31#	8-58-05265	1	Face Plate, Main and Left Broom
32	2-00-00221	Ref	Screw, 1/4-20 x .750 HHC
33	8-57-05021	1	Side Broom Pivot Weldment
34	2-00-02558	1	Lubrication Fitting, 45° 1/8 NPT
35	8-16-00034	1	Lever Weldment
36	2-00-00234	1	Screw, 3/8 - 16 x 1.50 HHC
37	2-95-04182	1	Nut, Hex Fiber Insert 3/8 - 16
38	8-39-00002	3	Knob
39	0891-008	1	Side Broom Valve
40	2-00-00199	2	Carriage Bolt, 1/4 - 20 x 1.750
41	8-08-00590	1	Valve Mounting Bracket
42	2-00-00641	5	Nut, Hex Fiber Insert 1/4-20
43	2-00-04940	2	ORFS Swivel Nut Branch Tee, #4 ORS
44	8-30-05143	1	Side Broom Guard - L.H.
45	8-08-00716	1	Cable & Valve Mounting L.H. Bracket
46	8-18-00352	1	Decal, Main and Left Broom
47	7-33-02181	1	Hose, Hydraulic ORS 4 Str. Ends 160"
48	8-33-02187	1	Hose, Hydraulic ORS 4 Str. Ends 97"
49	8-08-00739	1	Side Broom Arm Bracket L.H.
50	8-08-00759	1	Side Broom Arm Mounting Bracket L.H.

= Revised or new since last update

DUAL VACUUMIZED SIDE BROOMS OPTION

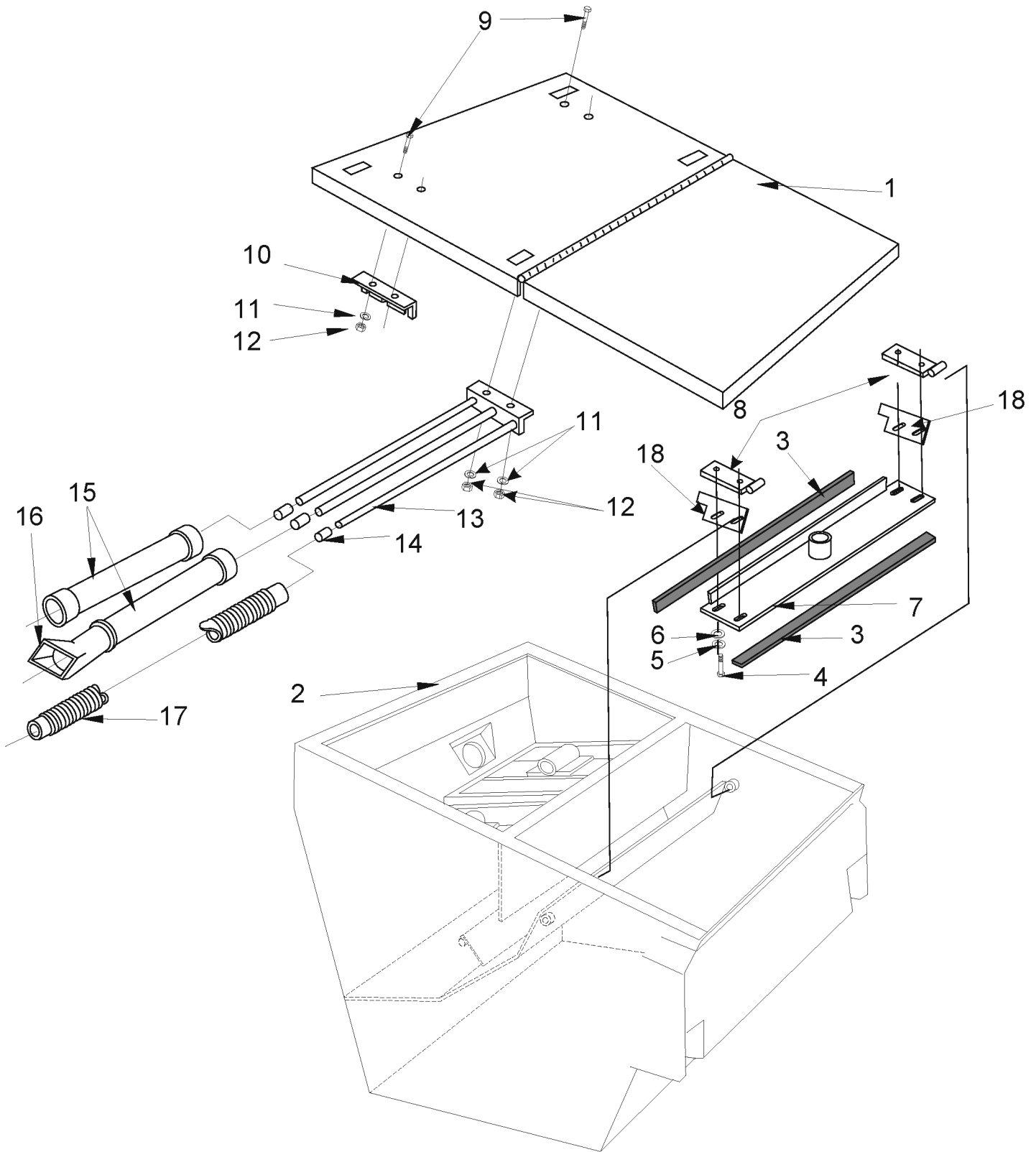
32

3366XP, 4366XP



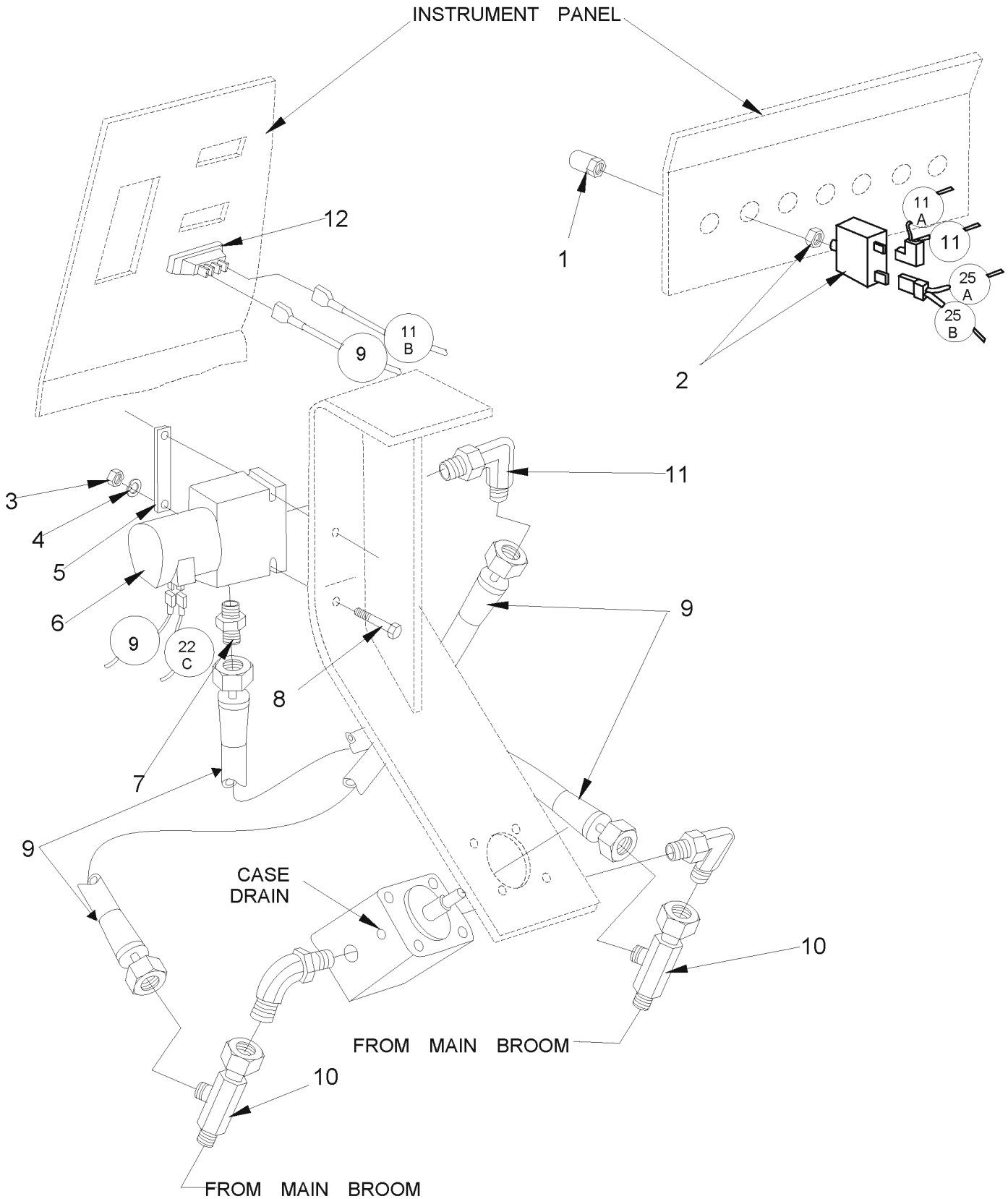
DUAL VACUUMIZED SIDE BROOMS OPTION**3366XP, 4366XP****33**

Item	Ref. No.	Qty	Description
	0880-517	1	Dual Vacuumized Side Brooms Option
1	8-30-05154	1	Right Hand Guard
1	8-30-05155	1	Left Hand Guard
2	2-00-00209	3	Screw, 3/8 - 16 x 1.250 HHC
3	2-00-02310	3	Lock Washer, Helical Spring 3/8 Med
4	2-00-00402	4	Flat Washer, .750 x .390 x .093
5	2-00-00518	22	Lock Washer, Helical Spring 1/4 Med
6	2-00-00221	16	Screw, 1/4 - 20 x .750 HHC
7	8-25-08164	1	Flap
8	8-08-00662	6	Strap
9	2-00-00594	10	Nut, Hex 1/4 - 20 x .437 x .218
10	2-00-00407	7	Flat Washer, 1/4
11	8-25-08165	1	Flap
12	8-25-08163	1	Flap
13	8-03-02041	1	Tube Adapter
14	2-00-03575	6	Carriage Bolt, 1/4 - 20 x .750
15	2-00-02360	1	Nut, Hex 3/8-16
16	8-08-00732	1	Side Broom Flap Bracket
17	8-03-02042	1	Tube Adapter
18	2-00-02217	2	Clamp
19	7-33-02234	1	Hose
20	2-00-00596	2	Nut, Hex 1/2-13
21	2-00-00241	2	Screw, 1/2-13 x 1.750 HHC
22	2-00-04159	2	Flat Washer, 1.38 x .56 x .109
23	2-00-02312	2	Lock Washer, Helical Spring 1/2



VACUUM WAND OPTION**3366XP, 4366XP****35**

Item	Ref. No.	Qty	Description
	0880-378	1	Vacuum Wand Option
1	8-16-07320	Ref	Hopper Lid
2	8-32-06081	Ref	Hopper Weldment
3	8-29-00190	2	Gasket
4	2-00-00221	4	Screw, 1/4 - 20 x .750 HHC
5	2-00-00518	4	Lock Washer, Helical Spring 1/4 Med
6	2-00-03702	4	Flat Washer, .625 x .281 x .062
7	8-58-05239	1	Adapter Plate
8	8-57-05019	2	Pivot
9	2-00-01481	4	Screw, 5/16 - 18 x 1.000 RHM
10	8-08-00622	1	Latch Bracket
11	2-00-00530	4	Lock Washer, Helical Spring 5/16 Med
12	2-00-00585	4	Nut, Hex 5/16 - 18 x .500 x .265
13	8-08-00623	1	Hose Storage Bracket
14	8-11-00034	3	Cap
15	8-89-00002	2	Wand Section
16	8-86-08010	1	Floor Tool
17	8-33-02121	1	Vacuum Hose
18	8-25-08183	2	Flap



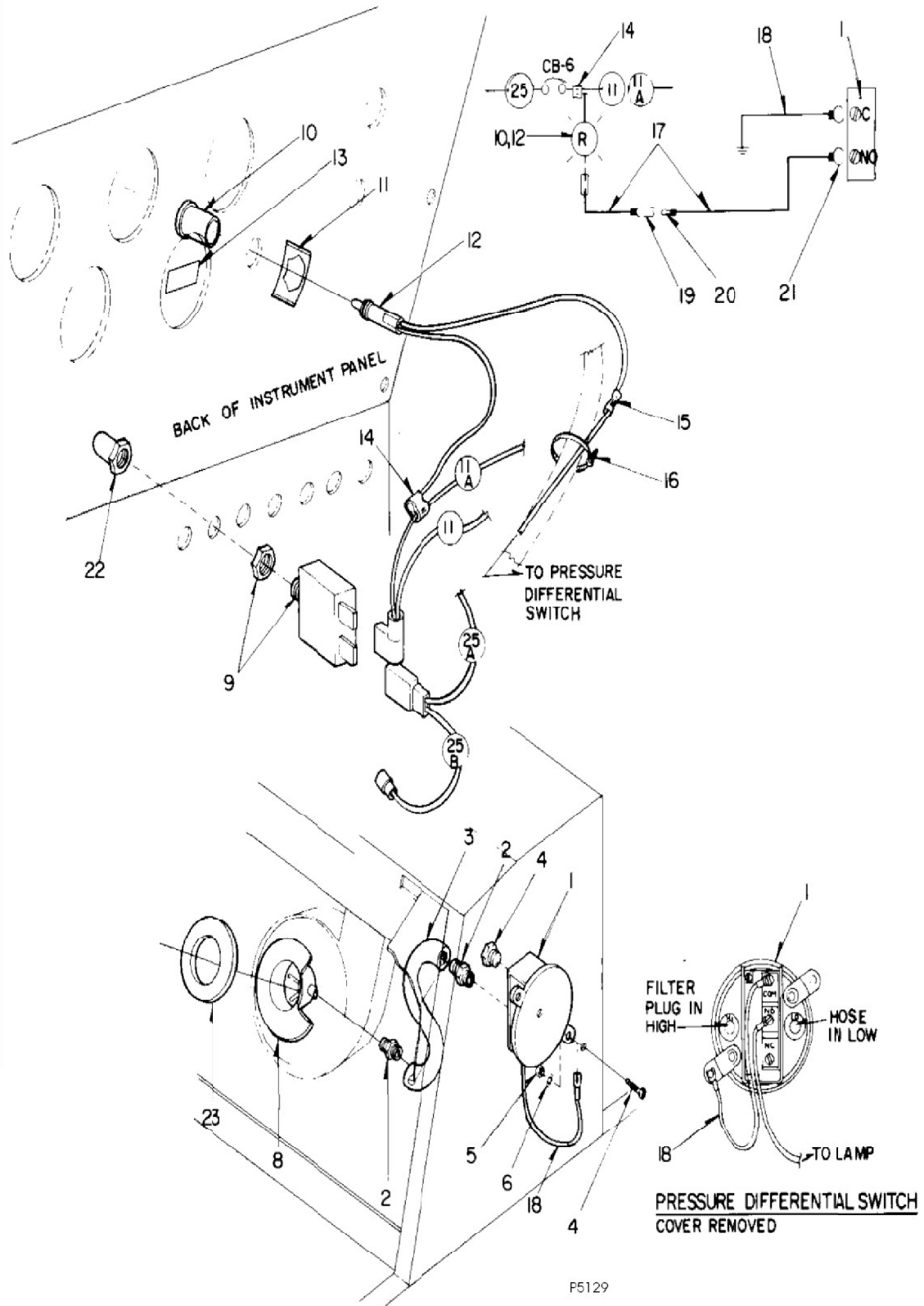
WET SWEEP BYPASS OPTION**3366XP, 4366XP****37**

Item	Ref. No.	Qty	Description
	0880-353	1	Wet Sweep Bypass Option
1	8-11-00044	1	Circuit Breaker Boot
2	8-64-00008	1	Circuit Breaker (15A)
3	2-00-00594	2	Nut, Hex 1/4 - 20 x .437 x .218
4	2-00-00518	2	Lock Washer, Helical Spring 1/4 Med
5	8-08-00590	1	Bracket
6	8-88-00042	1	Valve, Solenoid N.C.
	7-14-07005	1	Coil
7	2-00-04970	1	ORFS Connector, 3/4-16 / 13/16-16
8	2-00-02589	2	Screw, 1/4 - 20 x 2.000 HHC
9	8-33-02193	2	Hose, Hydraulic ORS 8/ str.ends - 18"
10	2-00-04928	2	ORFS Run Tee, 13/16 - 16
11	2-00-04885	1	ORFS 90° Elbow, 3/4-16 / 13/16-16
12	8-82-00044	1	Switch SPST

CLOGGED FILTER INDICATOR OPTION

38

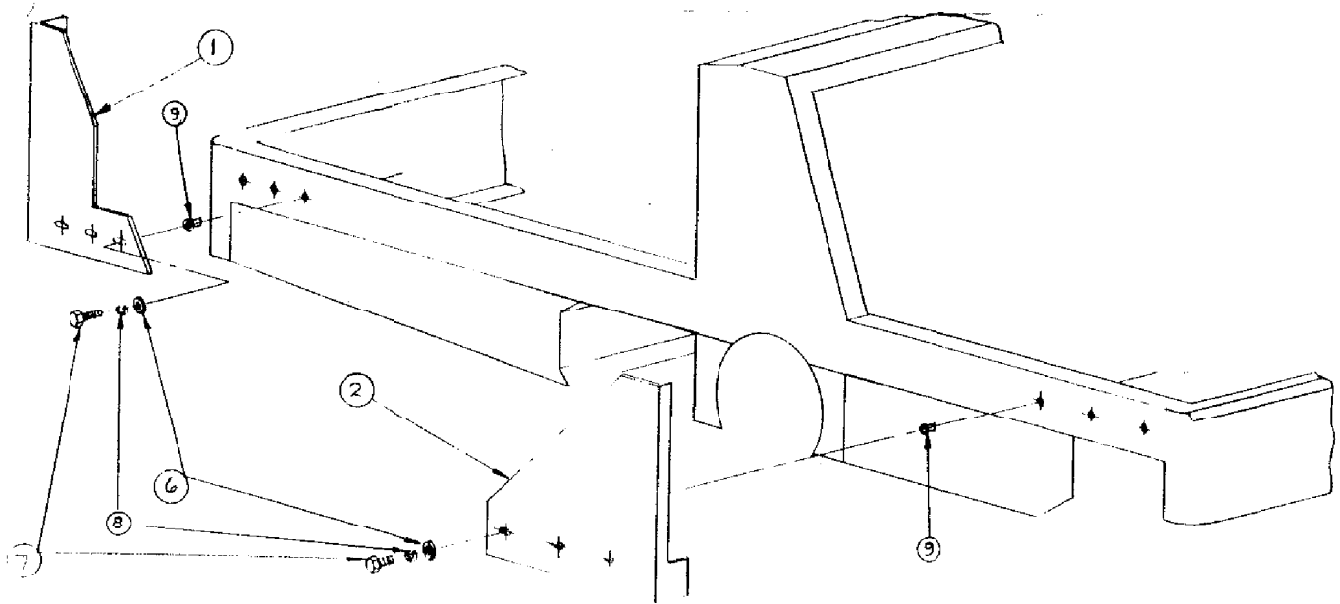
3366XP, 4366XP



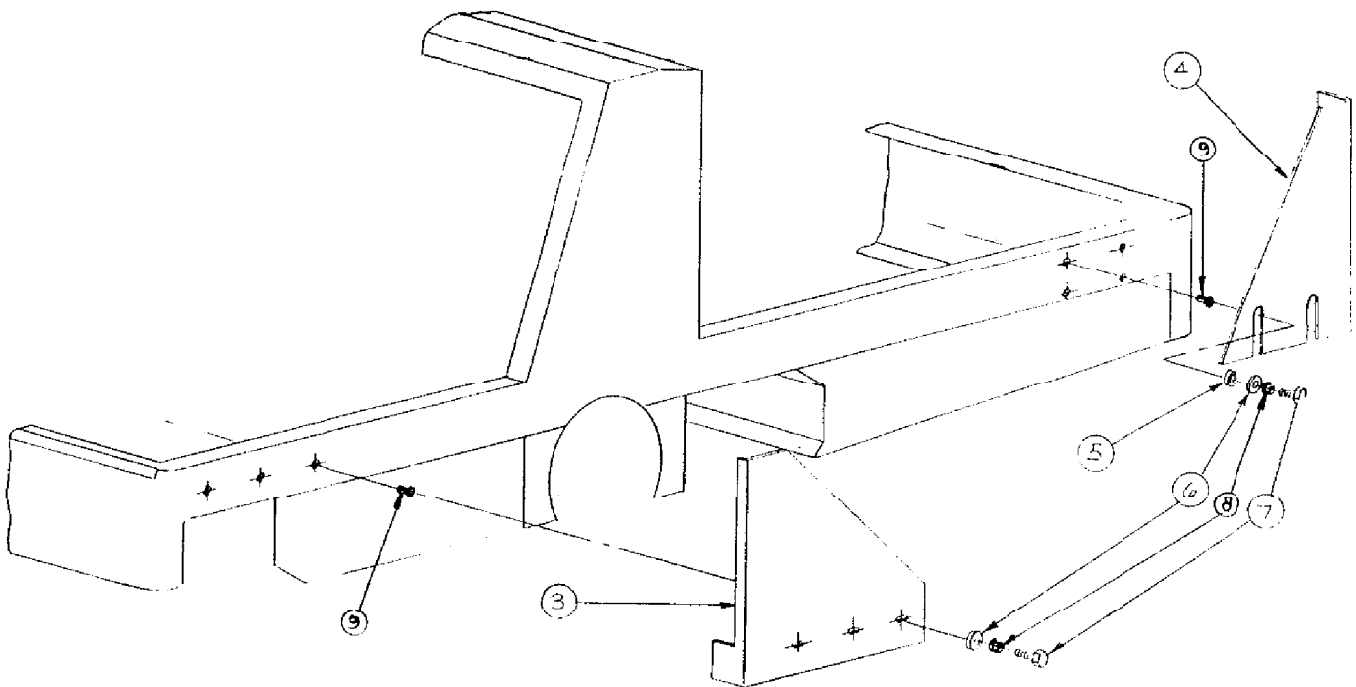
CLOGGED FILTER INDICATOR OPTION**3366XP, 4366XP****39**

Item	Ref. No.	Qty	Description
	0880-523	1	Clogged Filter Indicator Option
1	8-63-05014	1	Pressure Differential Switch
2	2-00-04518	2	Hose Fitting Barbed, Rigid Pipe Male 1/8 NPT
3	7-87-02155	1	Plastic Hose, 8.000 L.
4	8-24-04075	2	Filter Plug,
5	2-00-04479	2	Connector (3) way
6	2-00-01128	1	Butt Splice
7	2-00-04345	10	Wire Tie
8	8-11-00044	1	Boot
9	8-64-00008	1	Circuit Breaker, 15 AMP
10	7-41-03004-1	1	Lens, Red
11	2-00-04735	1	Nut, Spring Clip
12	7-40-05027	1	Lamp Socket, 14 V
13	8-18-00144	1	Decal, Warning Dirty Filter
14	3-61-00189	16"	Wire, Bulk Black 16 AWG
15	2-00-04717	1	Terminal, #6 Spring Spade
16	2-00-04626	2	Terminal, .156 Female Bullet
17	2-00-04578	1	Terminal, .156 Male Bullet
18	3-61-00249	92.50"	Wire - 16 AWG. GRN.
18A	3-61-00249	20	Wire - 16 AWG. GRN.
19	2-00-03261	1	Grommet

RIGHT SIDE



LEFT SIDE



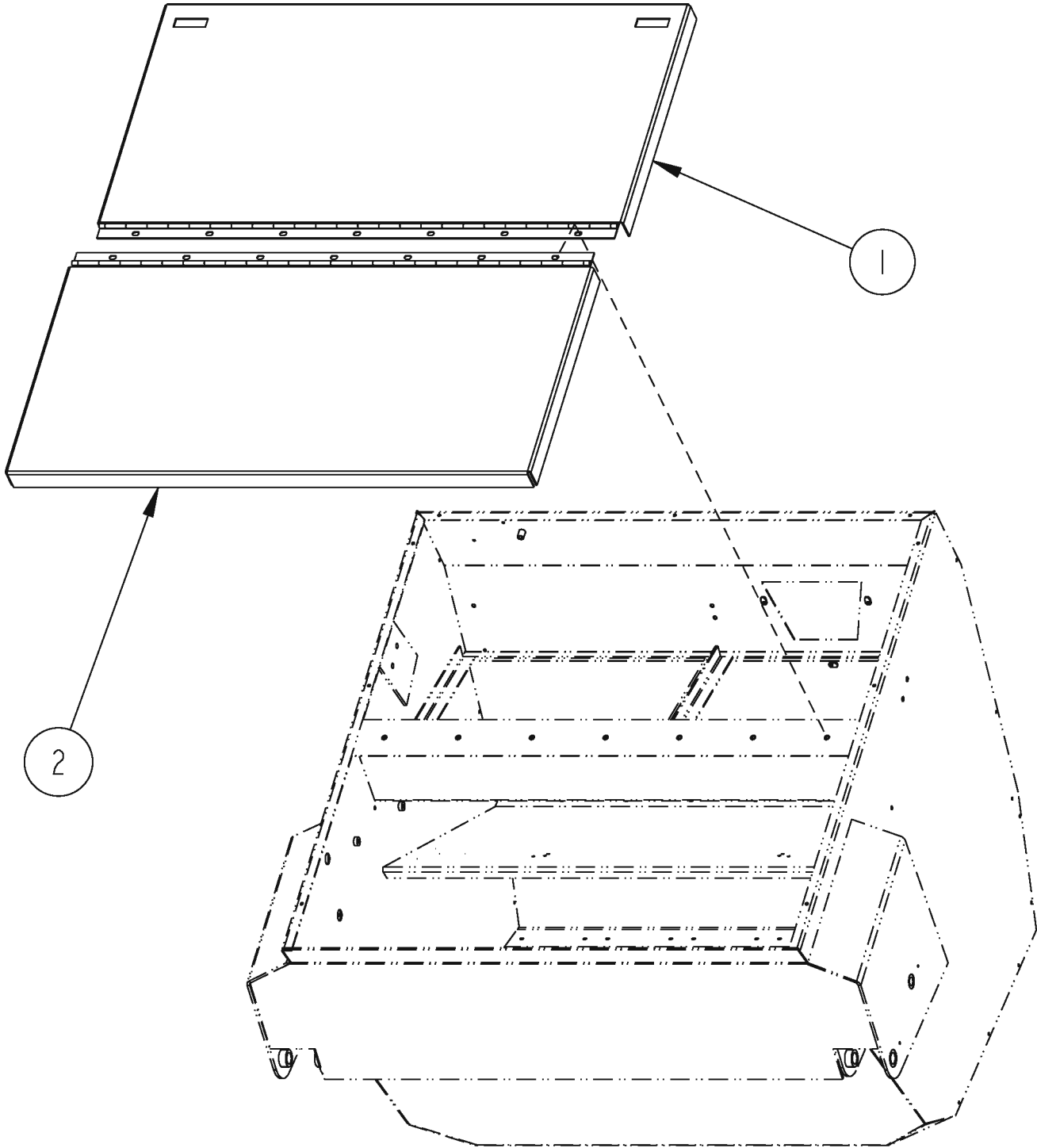
EXTERNAL PROTECTION PACKAGE OPTION**3366XP, 4366XP****41**

Item	Ref. No.	Qty	Description
	0880-531	1	External Protection Package
1	8-30-05150	1	Tower Bumper, RH Rear
2	8-30-05148	1	Tower Bumper, RH Front
3	8-30-05147	1	Tower Bumper, LH Front
4	8-30-05149	1	Tower Bumper, LH Rear
5	8-09-01089	4	Bushing
6	2-00-03266	13	Flat Washer
7	2-00-00233	13	Screw, 3/8-16 x 1.0 HHC
8	2-00-02310	13	Lock Washer, 3/8 Heliccal Spring
9	2-00-05347	13	Insert, 3/8-16 Threaded

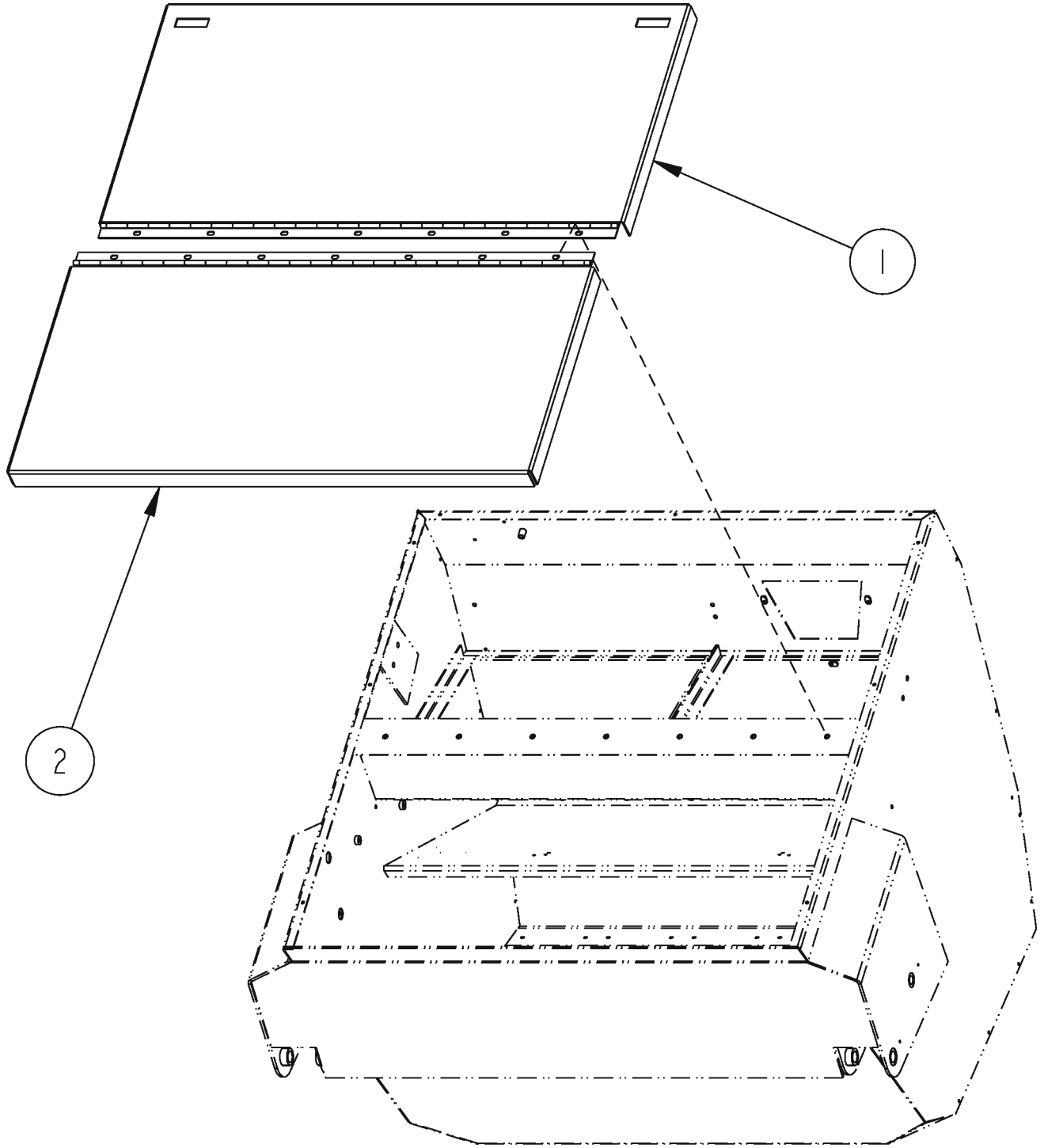
STANDARD COVERS OPTION

42

3366XP, 4366XP



Item	Ref. No.	Qty	Description
	0780-688	1	STD Covers W/Stainless Steel Hinges Option
1	8-16-07319-1	1	Cover, Standard Upper w/SS Hinge
2	8-16-07320-1	1	Cover, Standard Lower w/SS Hinge

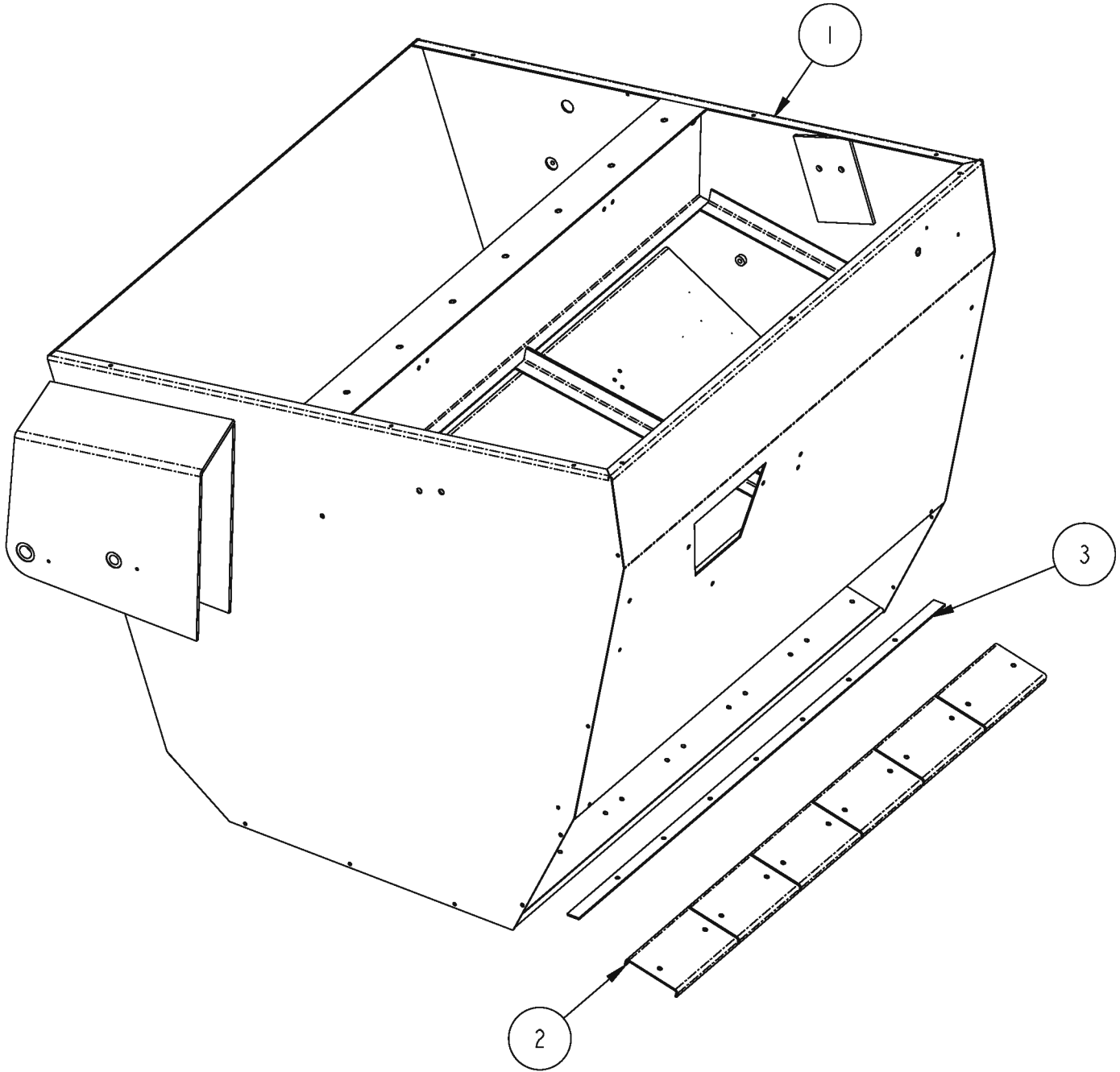


Item	Ref. No.	Qty	Description
	0780-689	1	Stainless Steel Covers W/Stainless Steel Hinges Option
1	8-16-07319-2	1	Cover, Stainless Steel Upper w/SS Hinge
2	8-16-07320-2	1	Cover, Stainless Steel Lower w/SS Hinge

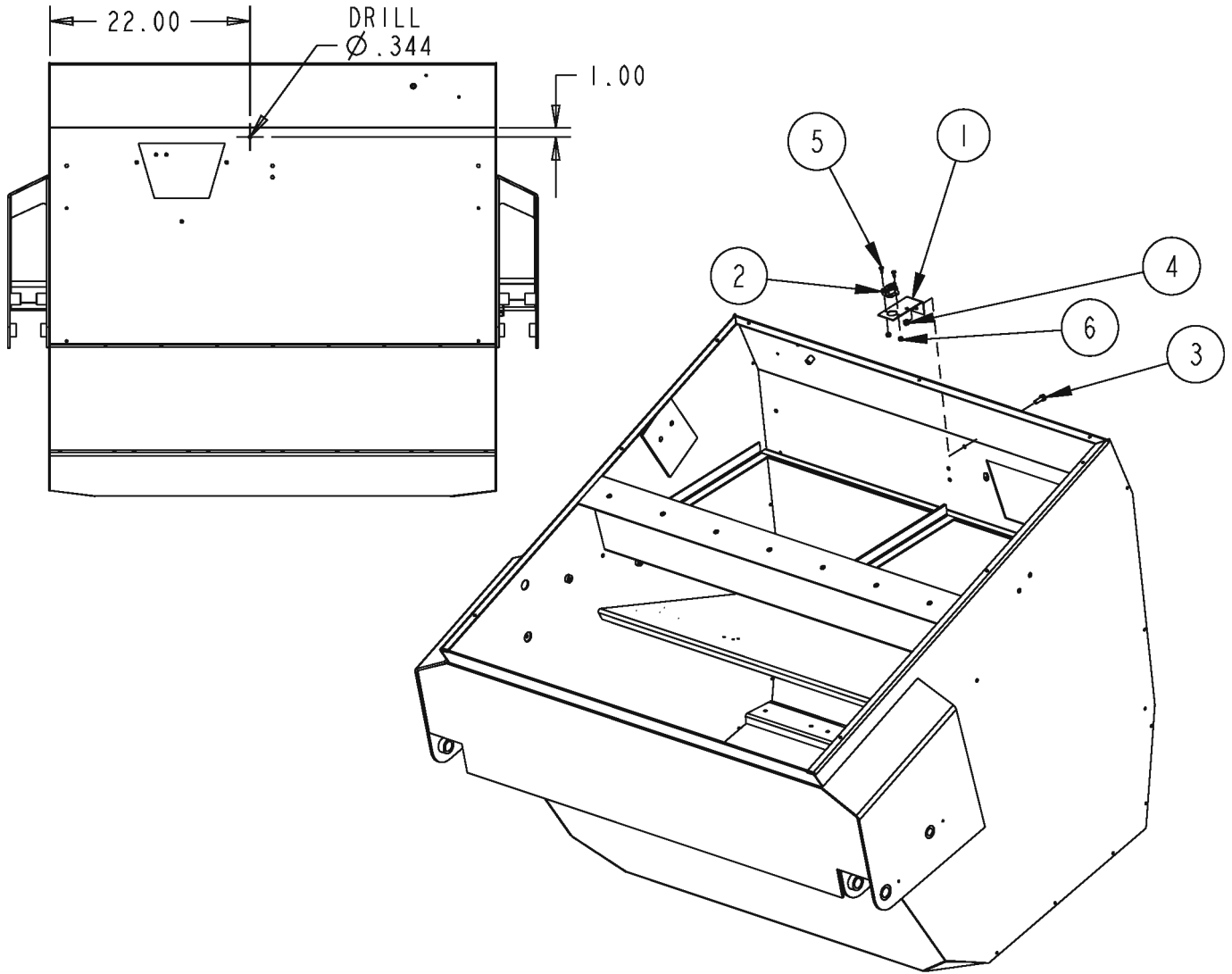
STAINLESS STEEL HOPPER OPTION

44

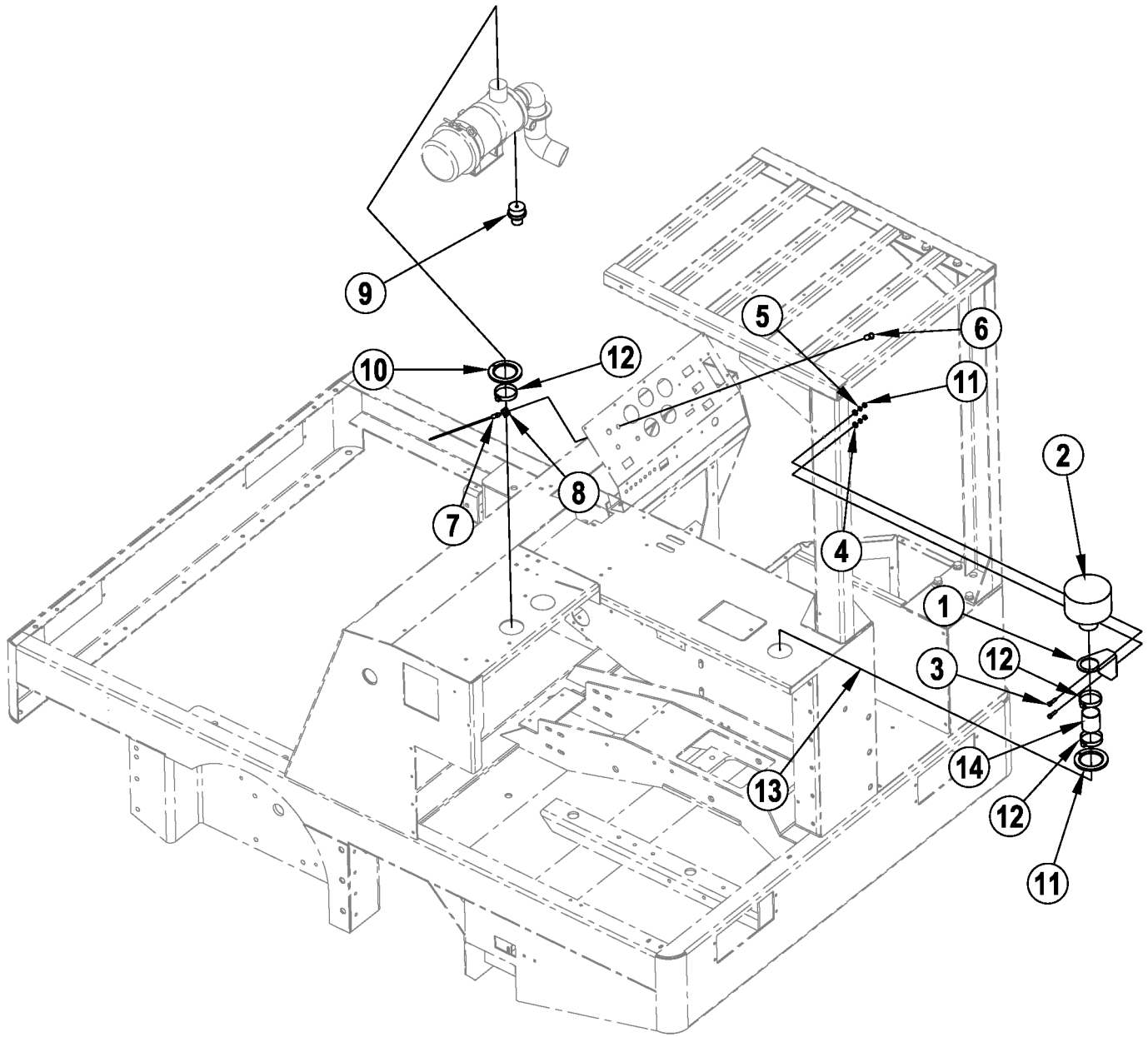
3366XP, 4366XP



Item	Ref. No.	Qty	Description
	0780-687	1	Stainless Steel Hopper Option
1	8-32-06096-1	1	Hopper, Stainless Steel
2	8-13-07084-1	6	Clamp, Hopper Bottom Flap
3	8-79-00111-1	1	Strap, Primary Deflector Flap



Item	Ref. No.	Qty	Description
	0780-694	1	Hopper High Temp Shutdown Option
1	8-08-00803	1	Bracket, Temperature Switch
2	8-82-00056	1	Switch, Thermostat
3	2-00-00208	1	Screw, 5/16-18 x .750 HHC
4	2-00-00644	1	Nut, 5/16-18 Fiber Insert Hex
5	2-00-00049	2	Screw, 10-24 x 1/2 RHM
6	2-00-01246	2	Nut, 10-24 Elastic Stop



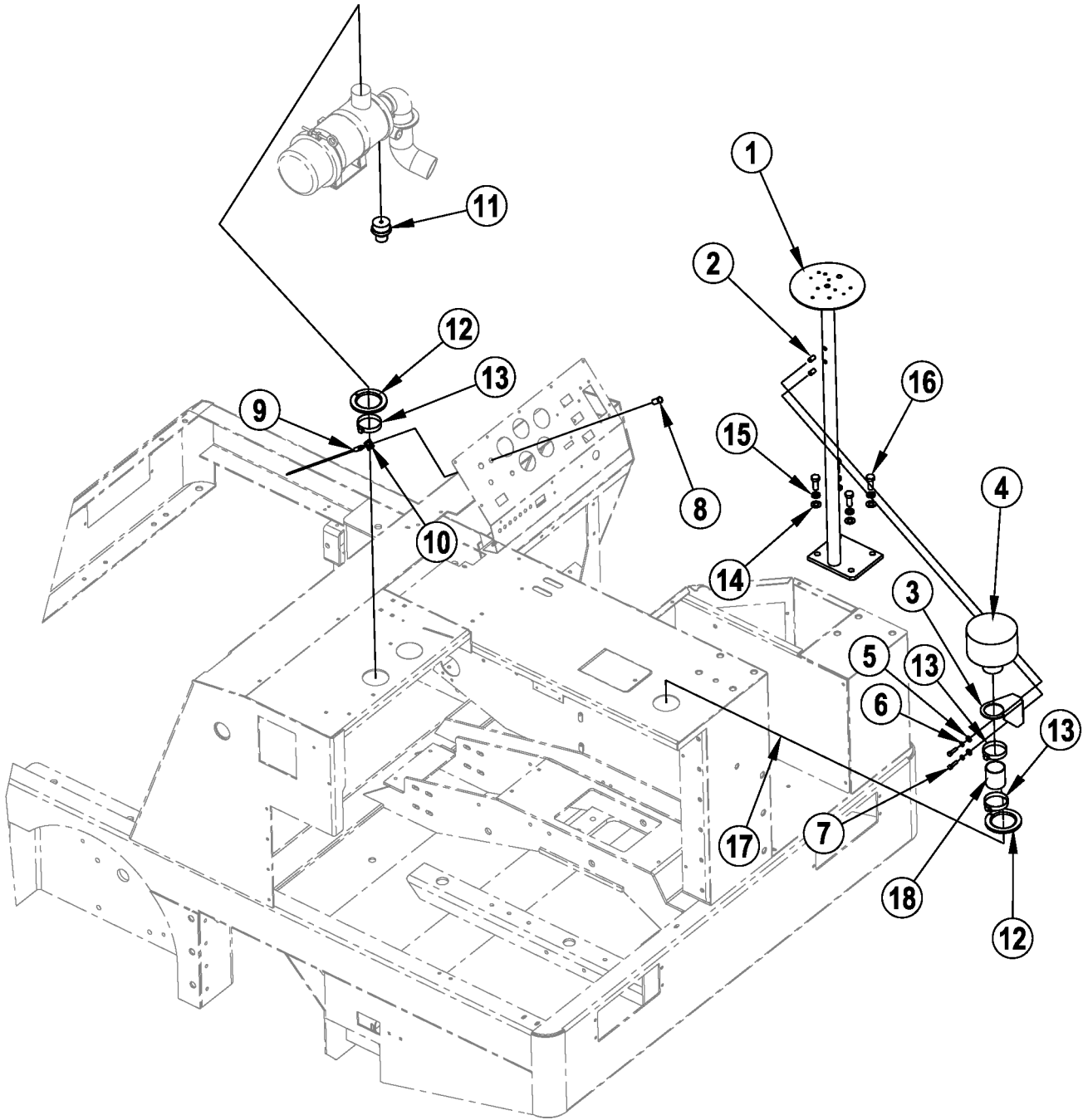
SE AIR CLEANER OPTION (W/ OVERHEAD GUARD)

08-2

3366XP, 4366XP**47**

Item	Ref. No.	Qty	Description
#	0780-693	1	SE Air Cleaner W/Overhead Guard Option (Gasoline/LPG)
#	56100840	1	SE Air Cleaner W/Overhead Guard Option (Diesel)
1	7-08-01336	1	Bracket
2	7-24-04107	1	Filter, Pre-Cleaner
3	2-00-00205	2	Bolt, 1/4-20 Fin. Hex Head
4	2-00-03702	2	Washer, .625 x .281 x .063
5	2-00-00518	2	Lock Washer, 1/4 Helical Spring
6	7-41-03004-1	1	Red Lens
7	7-40-05027	1	Lamp/Socket Assembly (14V)
8	2-00-04735	1	Clip, Spring
9	7-82-00065	1	Switch, Dust Load Indicator (Gasoline/LPG)
#	56100842	1	Switch, Dust Load Indicator (Diesel)
10	7-21-04022	2	Edging
11	2-00-00594	2	Nut, 1/4-20 Hex
12#	2-00-02216	3	Clamp, Hose
13	8-33-02114	1	Hose (10 ft.)
14#	7-87-02203	1	Coupling

= Revised or new since last update



SE AIR CLEANER OPTION (W/O OVERHEAD GUARD)

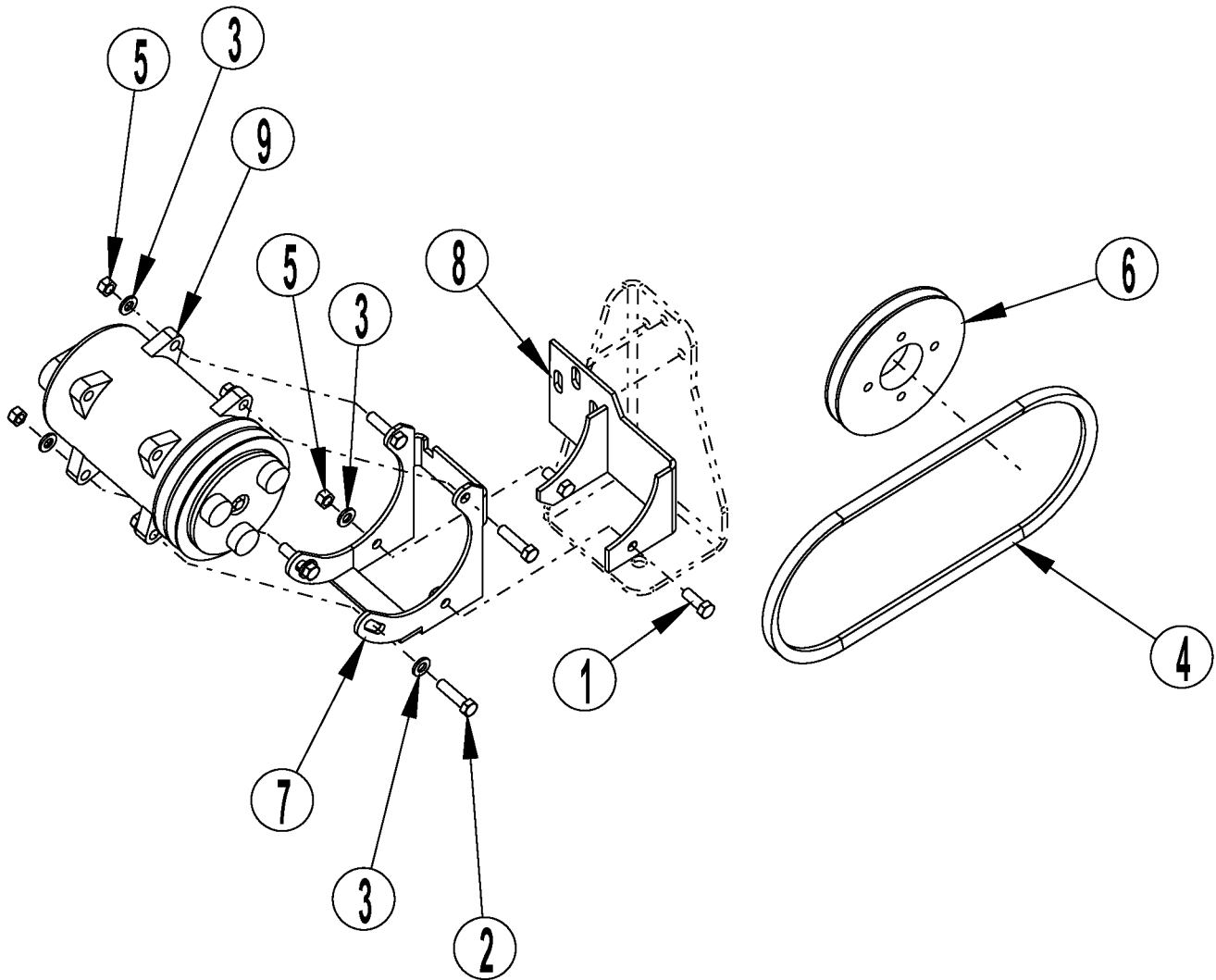
08-2

3366XP, 4366XP

49

Item	Ref. No.	Qty	Description
#	0780-695	1	SE Air Cleaner W/O Overhead Guard Option (Gasoline/LPG)
#	56100841	1	SE Air Cleaner W/O Overhead Guard Option (Diesel)
1	8-81-00145-1	1	Pole, Light
2#	2-00-05261	2	Nutsert, 1/4-20
3	7-08-01336	1	Bracket
4	7-24-04107	1	Filter, Pre-Cleaner
5	2-00-03702	2	Washer, .625 x .281 x .063
6	2-00-00518	2	Lock Washer, 1/4 Helical Spring
7	2-00-00205	2	Bolt, 1/4-20 Fin. Hex Head
8	7-41-03004-1	1	Red Lens
9	7-40-05027	1	Lamp/Socket Assembly (14V)
10	2-00-04735	1	Clip, Spring
11	7-82-00065	1	Switch, Dust Load Indicator
12	7-21-04022	2	Edging
13#	2-00-02216	3	Clamp, Hose
14	2-00-00420	4	Washer, 1/2 ID x 1.0 OD x .06
15	2-00-02312	4	Lock Washer, 1/2
16	2-00-00240	4	Screw, 1/2-13 x 1.25 HHC
17	8-33-02114	1	Hose (10 ft.)
18#	7-87-02203	1	Coupling

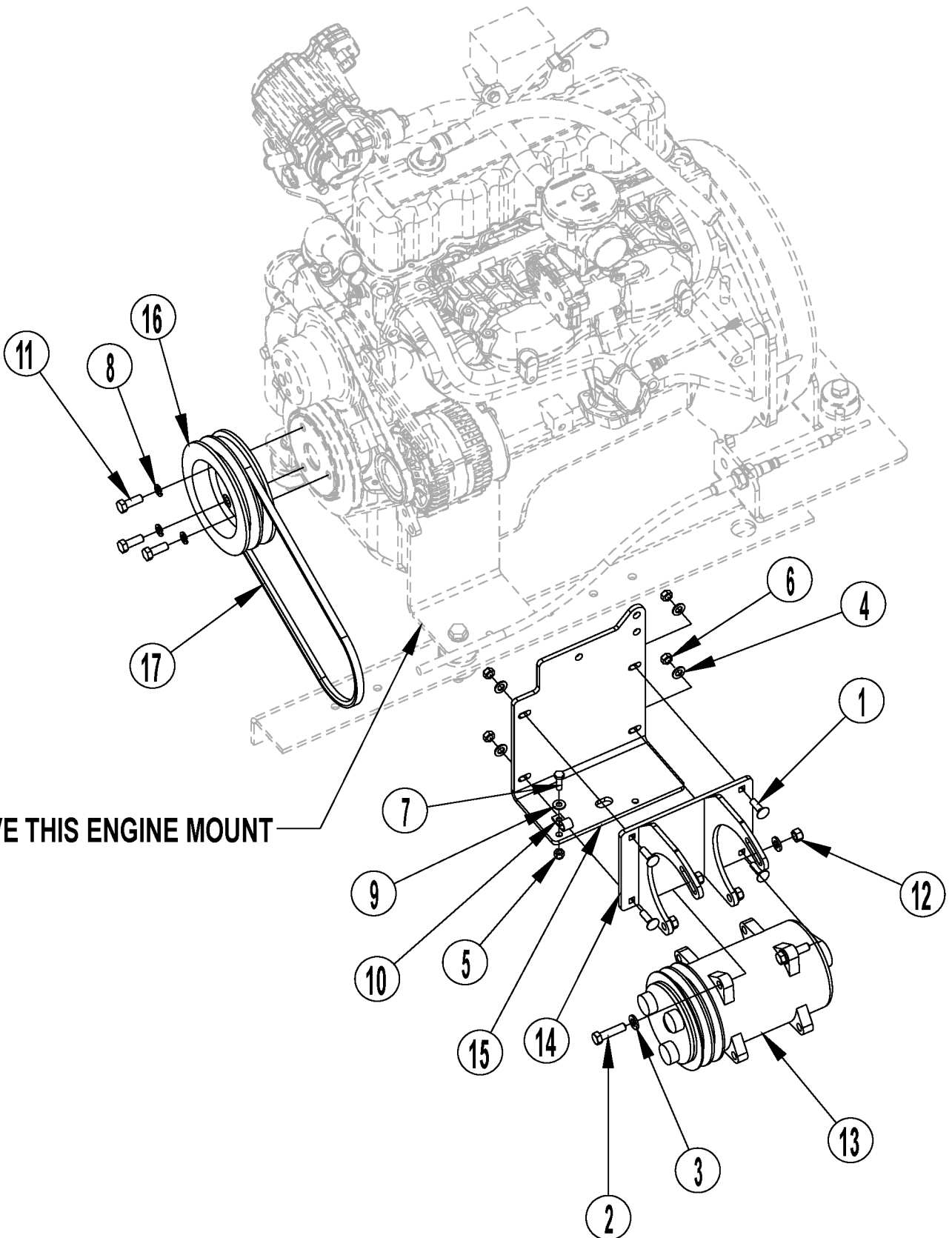
= Revised or new since last update



	A/C OPTION (DIESEL)		
07-1	3366XP, 4366XP		51

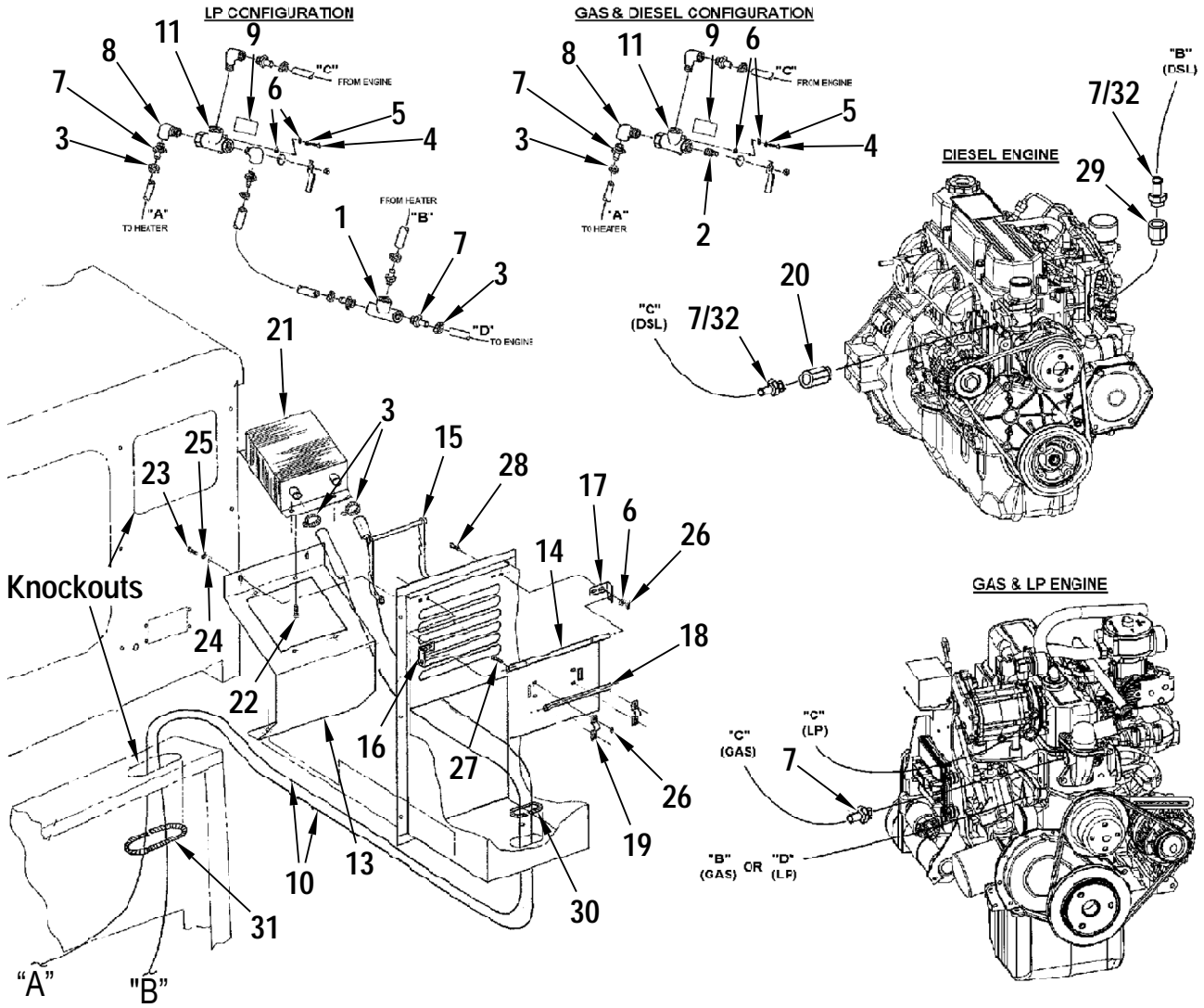
Item	Ref. No.	Qty	Description
	0780-692	1	A/C Option-Diesel
1	2-00-00233	2	Bolt-Hex Head, Finished, 3/8-16 X 1.00
2	2-00-00234	4	Screw, 3/8-16 X 1-1/2 Hhc
3	2-00-00402	8	Washer, 25/64" Id X 3/4" Od
4	2-00-06151	1	Belt-V #41360
5	2-95-04182	6	Nut, Hex, Stop, 3/8-16
6	7-60-00206	1	Pulley-V Belt
7	8-08-00950	1	Bracket, A/C Compressor
8	8-08-00951	1	Bracket, A/C Compressor
9	0782-177	1	A/C Compressor, Dual Groove
*	2-00-00828	1	Term-Stakon T71 Type 1
*	2-00-03360	2	Conn-Butt Splice Insulated
*	56109175	1	Fuse Holder, In-Line Mini
*	56109242	1	Ac Assy/S4q2 (Large Dsl)
*	56109247	1	Harness, Ac
*	56109248	1	Fuse, Mini 30 Amp

* = Not Shown



Item	Ref. No.	Qty	Description
	0880-762	1	A/C Option-GM 3.0L
1	2-00-00196	4	Bolt-Car, .31-18 X 1 Gr 5 Zn
2	2-00-00234	4	Screw, 3/8-16 X 1-1/2 Hhc
3	2-00-00402	8	Washer, 25/64" Id X 3/4" Od
4	2-00-00409	4	Flat Washer, .687 X .344 X .062
5	2-00-00641	1	Nut, Fiber Insert 1/4-20
6	2-00-00644	4	Nut, Hex, Insert Fiber, 5/16-18
7	2-00-01490	1	1/4-20 X 0.875", Hex Head Screw
8	2-00-02310	3	Washer-Lock, 3/8", Helical Spring
9	2-00-03702	1	Washer, .625 X .281 X .063
10	2-00-04602	1	Clamp
11	2-00-05381	3	Scr, Hhc .375-24x1.00 Gr 8 Zn
12	2-95-04182	4	Nut, Hex, Stop, 3/8-16
13	0782-177	1	A/C Compressor, Dual Groove
14	56109054	1	Bracket, A/C Compressor
15	56109057	1	Bracket, Engine Mount
16	56109058	1	Pulley, Dual Groove, 3.0l
17	56109059	1	V-Belt
*	2-00-00828	1	Term-Stakon T71 Type 1
*	2-00-03360	2	Conn-Butt Splice Insulated
*	56109175	1	Fuse Holder, In-Line Mini
*	56109243	1	Ac Assy/Gm 3.0l Engine
*	56109247	1	Harness, Ac
*	56109248	1	Fuse, Mini 30amp

* = Not Shown



HEATER OPTION

08-2

3366XP, 4366XP

55

Item	Ref. No.	GAS Qty	LPG Qty	DSL Qty	Description
#	56109200	1			Heater Option – Gasoline / Petrol
#	56109201		1		Heater Option – LPG
#	56109202			1	Heater Option – Diesel
1	2-00-04497	0	1	0	FTG-Tee
2	2-00-02474	1	0	1	Plug-Pipe-Galv .50
3	2-00-03407	6	10	6	Clamp-Witteck-10P
4	2-00-03059	2	2	2	SCW-PH THM #10-24 x .38 ZN
5	2-00-00519	2	2	2	LK Wash #10 Med Sec ZN
6	2-00-00426	8	8	8	WSHR-FL .500 x .219 x .063 STL ZN
7	7-25-02040	3	7	4	Hose Fitting
8	2-00-04328	2	3	2	Elbow-Street 90 Deg .50NPT
9	8-18-00331	1	1	1	Decal-Heater Valve
10	3-71-00125	25	25	25	5/8 ID Blck Heater Hose SAE20
11	8-88-00043	1	1	1	Heater Valve
13	8-08-00893	1	1	1	Bracket-Heater
14	8-33-05141	1	1	1	Blower Housing Door Weldment
15	8-33-05142	1	1	1	Blower Housing Door Handle
16	8-32-00052	1	1	1	Hinge (RH)
17	8-32-00053	1	1	1	Hinge (LH)
18	8-55-08135	1	1	1	Cab Heater-Pivot Pin
19	8-13-07094	2	2	2	Conduit Clamp
20	56109081	0	0	1	Adapter M16 x 1.5-3/8NPT
21	8-62-01015	1	1	1	Heater Core
22	2-00-01994	4	4	4	SCR-TF/PRH #8-15 x .75 type A
23	2-00-00220	4	4	4	SCW-HHC .25-20 x .63 GR 8 ZN
24	2-00-03702	4	4	4	WSHR-FL .625 x .281 x .063 STL ZN
25	2-00-00518	4	4	4	LK WASH 1/4 Med Section ZN
26	2-00-01246	8	8	8	#10-24 Nylon Insert Thin
27	2-00-00006	4	4	4	SCREW-FHM #10-24 x .63 ZN
28	2-00-00049	4	4	4	SCW-RHM 10-24 x .50 ZN PL
29	56109082	0	0	1	Adapter 3/8BSPT – 3/8NPT
30	8-21-04015	1	1	1	Moulding-Rubber
31	8-21-04039	1	1	1	Edging-Engine Cover
32#	2-00-05972	-	-	2	Hose Fitting – 90 Deg

= Revised or new since last update

American-Lincoln®

14600 21st Avenue North
Plymouth, MN 55447-3408
www.americanlincoln.com
Phone: 800-331-7692
Fax: 877-877-2586
©2008 American-Lincoln