

# TrackClean fleet management system

- Transparency and profitability at your fingertips

How long are my machines actually working?

Is our cleaning getting done on schedule?

Who was operating that scrubber?

Where are my machines located?

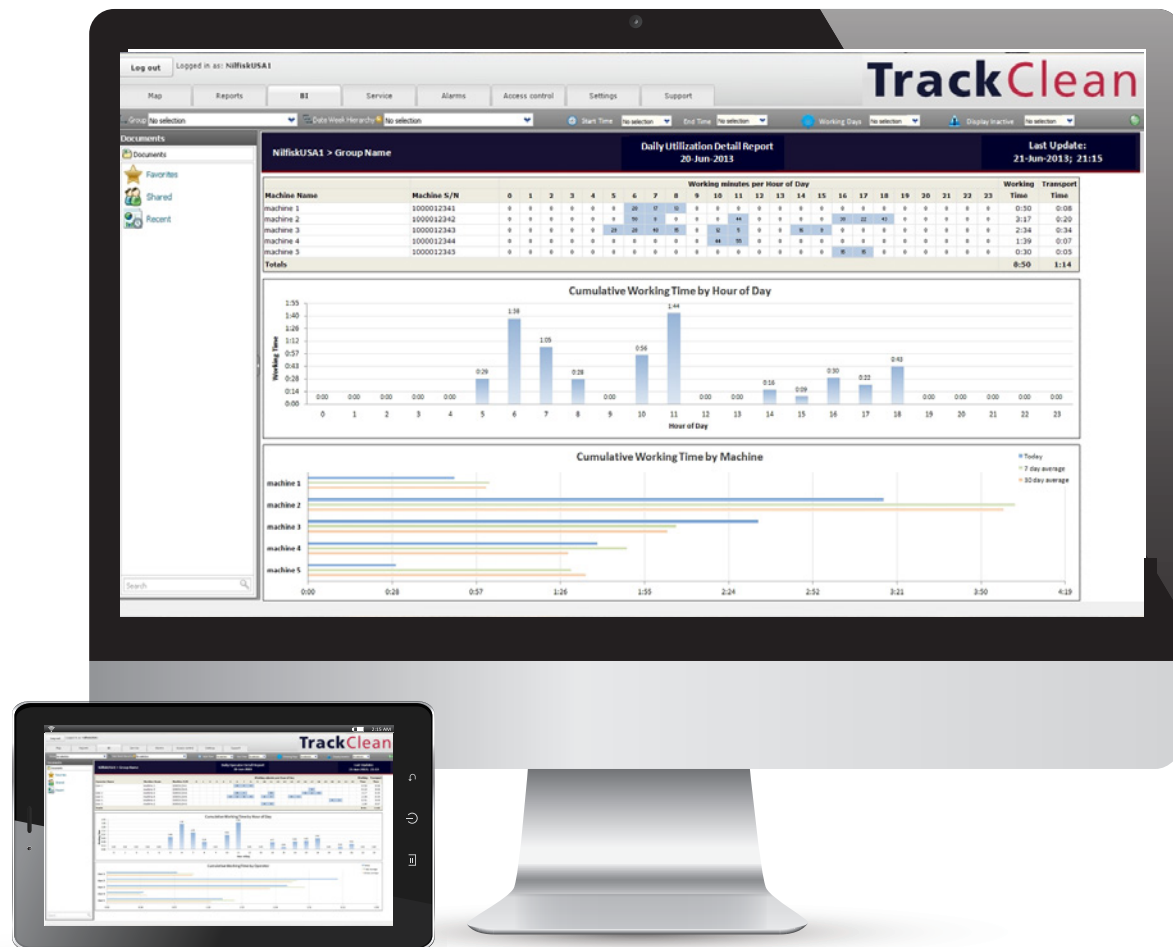
Does my equipment need service?

Could our cleaning processes be more efficient?

How can we increase productivity?

Operator Identification  
3694

Machine ID	Operator	Status	Location	Hours	Tasks
1	101	Active	Zone A	08:00	Scrubbing
2	102	Idle	Zone B	08:00	Scrubbing
3	103	Active	Zone C	08:00	Scrubbing
4	104	Idle	Zone D	08:00	Scrubbing
5	105	Active	Zone E	08:00	Scrubbing
6	106	Idle	Zone F	08:00	Scrubbing
7	107	Active	Zone G	08:00	Scrubbing
8	108	Idle	Zone H	08:00	Scrubbing
9	109	Active	Zone I	08:00	Scrubbing
10	110	Idle	Zone J	08:00	Scrubbing



TrackClean gives you 24/7 remote access to every connected cleaning machine. This means you know exactly *what* is happening, *when* and *where* it is happening and *who* is doing it – with every connected machine you can monitor, verify and improve your operational effectiveness.



# Track your equipment – track your success

## - Fleet management system for the cleaning professional

With TrackClean, you can now initiate proactive improvements in your cleaning program. The TrackClean system monitors fleet operations and transmits the equipment operation data to a secure web portal. The data includes the machine working time, the machine down time, time of day that each activity occurred, the geographic location of the machine, and as an option can include information about the operator.

The system creates reports that ensure you can drive results into your cleaning operation. You can access the secure web portal to review your fleet operations 24/7. You can also schedule reports to be proactively sent directly to your email.

### Your benefits

- TrackClean records operational data of your fleet, ensures transparency and increases your profitability
- TrackClean allows you to intelligently optimize your cleaning program, monitor cleaning performance and reduce cost
- The intuitive web portal is accessed via your PC, tablet device or smart phone and provides you with a detailed overview of machine activity to help you drive results into your cleaning operation
- Data is available 24/7 ensuring you the possibility to optimize your machine deployment and reduce down-time
- TrackClean notifies you of any issues that need immediate attention and can help reduce your repair costs and down-time

### All this and more is available to you at your fingertips 24/7

With the intelligence of TrackClean, you can now link your operation data to cleaning performance and customer satisfaction – this will help ensure your team is delivering the best clean while improving efficiency.

The TrackClean fleet management system is available on a variety of the most popular Nilfisk cleaning machines. For more information, please contact your local sales partner.







# Track your equipment – track your success

## - Fleet management system for the cleaning professional



With the TrackClean fleet management system, no matter the size of your cleaning equipment fleet, you can leverage the power of cloud-based data reporting in real time to optimize your resources and productivity. This results in more cleaning time, more facilities cleaned and more satisfied customers, and this is why TrackClean does not just track your equipment – it tracks your success.

For more information, please contact your local sales partner.

TrackClean monitors your fleet operation, transmits the data to your secured web portal and converts the data into useful information.

- Scrub time
- Transport time
- Machine identification
- Machine location
- Operator ID
- Time of day for every machine action

9435 Winnetka Avenue North  
Brooklyn Park, MN 55445  
[www.advance-us.com](http://www.advance-us.com)  
Phone 800-850-5559  
Fax 800-989-6566

©2016 Nilfisk, Inc. Form L3381A 12-8-16

240 Superior Boulevard  
Mississauga, Ontario, Canada L5T 2L2  
[www.nilfisk-advance.ca](http://www.nilfisk-advance.ca)  
Phone 800-668-8400  
Fax 800-263-5111

