

Commercial Equipment

Defining Cleaning Innovation



Upright Vacuums
Canister & Specialty Vacuums
Extractors / Carpet Equipment
Sweepers
Floor Machines
Burnishers
Automatic Walk-Behind Scrubbers
Stand-On Scrubbers
Rider Scrubbers
Wet/Dry Tank Vacuums
All-Purpose Cleaners
Specialty Products

ISSA[®]
2014 Best Customer
Service Award
Winner



Smart cleaning.

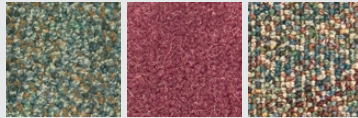
A Nilfisk-Advance Brand



Vacuums for Every Cleaning Need

Whether your cleaning tasks call for a vacuum that's lightweight and easy to maneuver, a heavy-duty, large-area machine, or something in between — Advance has the answer. And your Advance representative has the expertise to help you choose the best models for your cleaning program, including vacuums that meet LEED-EB guidelines and the GS-42 green cleaning standards.

Advance's line of single-motor upright vacuums delivers effective and cost-efficient cleaning. You can look for the Carpet and Rug Institute (CRI) Seal of Approval Certification on Advance uprights. The CRI certification means the machine has passed independent tests verifying its ability to remove soil, contain dust and retain quality carpet appearance. Spectrum™ single motor and dual motor models are CRI certified and are designed to be easy-to-maneuver with better dirt pickup and better filtration at a better value.



ReliaVac® 12 & 12DC

Single-motor
Upright Carpet Vacuums

- 12 inch path is cleaned with a durable steel brush roller
- ReliaVac® 12 top fill bag enhances vacuum power
- ReliaVac® 12 DC model has an easy to empty dirt cup
- Removable clear fan cover allows for identifying and removing clogs



Spectrum™ 12P & 15P

Single-motor
Upright Carpet Vacuums

- 11.5 or 14.5 inch cleaning path
- Powerful 1,000 Watt, 2-stage motor
- Adjustable brush height
- Certified H.E.P.A. filtration standard
- Tools-free removable brush
- Heavy duty cord restraint
- Convenient front handle for lifting
- Accessories are conveniently tucked behind wand
- Sealed, maintenance-free cog belt



ReliaVac® 12HP & 16HP

Single-motor
Upright Carpet Vacuums

- 12 or 16 inch cleaning path
- High performance cleaning power with the aluminum brush roller
- Replaceable bristle strips and beater bars for versatile cleaning
- Removable clear fan cover allows for identifying and removing clogs
- Headlight illuminates work area



Spectrum™ 12H

Single-motor
Upright Carpet Vacuum

- Designed for the hospitality market
- 33 foot detachable gray cord
- Non-marking tear-resistant bumper
- 11.5 inch cleaning path
- Powerful 1,000 Watt, 2-stage motor
- Adjustable brush height
- Certified H.E.P.A. filtration standard
- Tools-free removable brush
- Two heavy duty cord restraints
- Convenient front handle for lifting
- Accessories are conveniently tucked behind wand
- Sealed, maintenance-free cog belt

Dual-Motor Vacuums for Powerful, Efficient Pick-up

When your facility calls for daily use of a heavy-duty, long-life vacuum, Advance has the dual-motor upright for you. Our Spectrum™ vacuum cleaners deliver more productivity, better filtration, and better value than other upright vacuums on the market. Indoor air quality is greatly improved for all occupants with a combination of 3-stage filtration, including H.E.P.A., and low sound level. The VU500™ series is CRI certified (silver) and delivers exceptional cleaning performance in an easy to use, easy to maintain upright vacuum that is designed to withstand stringent environmental requirements. Built for one-pass cleaning, the CarpeTrier™ 28 vacuum is perfect for cleaning large areas. The chevron bristle pattern on this machine draws dirt to the vacuum intake for efficient cleaning. Operator fatigue is minimized with the CarpeTrier vacuum since the need for back and forth movement is eliminated.



VU500™ Series

12 & 15 inch Single-motor Upright Carpet Vacuums

- 11.5 or 14.5 inch cleaning path
- Powerful 1,000 Watt, 2-stage motor
- Automatic self adjusting brush height
- Advance radius turning system permits quick, short turns in tight places
- Certified H.E.P.A. filtration standard
- Innovative quick cord clip for simple cord management
- Detachable power cable for quick service
- Accessories are conveniently tucked behind wand
- Sealed, maintenance-free cog belt



Spectrum™ 15D & 18D

Dual-motor Upright Carpet Vacuums

- 14.5 or 17.5 inch cleaning path
- Separate vacuum and brush motors for a powerful performance
- 1,350 Watts of power with combination of independent brush and vacuum motors
- Adjustable brush height with low brush height indicator light
- Certified H.E.P.A. filtration standard
- Tools-free removable brush
- Heavy duty cord restraint
- Convenient front handle for lifting
- Accessories are conveniently tucked behind wand
- Sealed, maintenance-free cog belt



CarpeTrier™ 28

Large Area Upright Carpet Vacuum

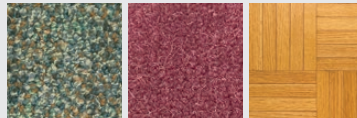
- 28 inch cleaning path allows for increased productivity
- Dual vacuum motors provide generous pickup power
- Large 1 bushel capacity cloth bag is standard
- Carpet brush propels the machine, minimizing operator fatigue

Canister & Specialty Vacuums



Canister Vacuums for Maximum Cleaning Flexibility

Need to clean floors, plus walls, ceilings and other off-floor surfaces? Need to clean in occupied areas or during business hours? Then you need the flexible cleaning performance of canister vacuums from Advance. Canister vacs feature quiet operation and multi-level filtration systems for improved indoor air quality (IAQ). With their straight-forward design and few moving parts, canister vacuums minimize clogging and maximize reliability for the lowest total cost of ownership. The VP300 is a basic, well-built, thoroughly reliable machine that can be counted on to do the job day in day out. It provides a valuable carpet care solution with a lightweight, sustainable design. The Euroclean GD930 is our biggest, most powerful canister vacuum. It features a large 4 gallon dust bag, so your customers can vacuum longer without having to stop and change bags. The Euroclean GD930 canister vacuum delivers superior cleaning performance for a wide range of applications.



VP300

Canister Vacuum

- 900 Watt motor
- 69 dB A sound level
- Filter basket standard for bagless operation
- Three levels of filtration standard
- 33 foot cord, rotating dust brush and crevice tool stored onboard
- Telescopic aluminum wand optional



Euroclean GD930

Canister Vacuum

- 1,000 Watt, 1.25 hp motor
- 66 dB A sound level
- Three levels of filtration standard
- Optional H.E.P.A. filtration
- 4 gallon (15 L) dust collection bag
- Injection molded cover
- Durable chrome plated steel tank
- Dual mode floor tool
- Foot operated on/off switch
- Waterlift 89 inches
- Air flow 67 CFM
- Standard tools include a combination brush/nozzle, 6 foot suction hose, dual mode floor tool, two piece wand and crevice tool.

Backpack Vacuums for Reduced Operator Fatigue

Cleaning confined and cluttered office space, stairways and other obstructed areas has never been easier – when you choose a backpack vacuum from Advance. Never before has there been a backpack as comfortable and effective as the Adgility™ XP. The weight of the vacuum is distributed more evenly on the operator with the premium cushioned harness design on the Adgility XP. The vacuum moves with the operator when bending or twisting. Both the Adgility 6XP and 10XP are packed with power, but produce a sound level of only 62 dB A. Not only does this quiet performance result in less operator fatigue, but the Adgility XP is quiet enough to use any time of day without fear of disturbing building occupants. The Adgility XP has received CRI Seal of Approval for vacuums certification. The Adgility™ hip-style vacuum combines light weight with an ergonomic shape to create a new standard in comfort and performance. These vacuums were built with operator comfort in mind with its padded waist belt. The belt includes loops to hold the crevice tool and dust brush, keeping them handy when on the go.



Adgility™

Backpack Vacuum

- Lightweight at only 6.4 pounds
- Powerful 1,000 Watt motor generating 100 CFM and 96 inches of waterlift
- Three levels of filtration standard, H.E.P.A. filter optional
- 50 foot (15 m) safety yellow power cord for long cleaning reach
- Includes 12 inch combination floor tool, dust brush, crevice tool and six dust bags



Adgility™ 6XP & 10XP

Backpack Vacuums

- Comfortable, lightweight design
- Powerful 1,300 Watt motor
- Premium harnessing system
- Quiet 62 dB A sound level
- Cord restraint clips onto the safety cord and holds it in place
- Exhaust port directs warm air up and away from the operator
- SaniSeal™ self-sealing adhesive rim on bag seals to contain all dust and dirt
- Four levels of filtration, H.E.P.A. filter optional

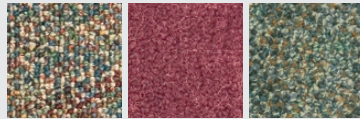


Advance Extractors are Industry Leading

From handy spot cleaners to innovative riding machines, Advance offers a complete line of carpet extraction equipment.

The Advance AquaSpot® carpet spot extractor works as a convenient, easy-to-use extractor for quick clean-up of spills or touch-ups on carpet or upholstery. The Advance AquaClean® line is one of the most popular extractors on the market. The AquaClean®, self contained extractors, provide superior cleaning results and leave carpets nearly dry and ready to use. The Advance ET600™ is available with either an AquaWand™ or Stainless Steel wand with three models to choose from. All come with Bronze CRI Seal of Approval, to meet your various portable extractor needs. The AquaPLUS™ AXP™ battery extractors feature *LIFT™* Technology for low-moisture cleaning and fast dry times. Carpets are dry within 30 minutes when using AquaPLUS™ extractors with *LIFT*.

With the complete line of extractors from Advance, carpets are cleaned better, faster, and easier, resulting in increased productivity.



AquaClean® 12ST

Self-Contained Extractor

- Single nozzle spray system allows for even coverage over the cleaning path
- 5 gallon solution tank
- 12 inch cleaning path
- Single spray jet technology allows for even coverage over cleaning path



AquaPLUS™ AXP™

Carpet Extractors

- AXP™ Onboard Detergent Dispensing System
- *LIFT™* Technology for low-moisture cleaning
- One-Touch™ operation
- Deep Treat™ cleaning for pre-spray and post cleaning treatment



AquaClean® 16ST/16XP/18FLX

Self-Contained Extractors

- Aerodynamically engineered vacuum shoe for constant acceleration and superb water recovery
- 1.5 three stage vacuum motor, 117 inches of waterlift, 50 foot (15 m) cord
- Brush and vacuum shoe removed without tools
- XP and FLX models include onboard spotting tool



ET600™

Portable Extractors

- 13 gallon (49.2 L) solution tank
- 10 gallon (37.9 L) recovery tank
- Single 3-stage vac motor, 137 inch waterlift
- 100 psi or 400 psi pump choice
- Instantaneous heat (100H and 400H models)
- Circuit Finder for dual plug on Heater models
- Available with AquaWand or Stainless Steel Cleaning Wands
- A variety of accessories and options are available



Advance ES4000

TOTAL CARPET CARE.

One Machine Does it All, Faster.

The **Advance ES4000 Total Carpet Care System** offers complete versatility, from everyday carpet maintenance to deep restorative extraction.

You want productivity.

Upgrade from a fleet of dedicated use carpet extractors to a single high efficiency rider that offers vastly more productivity, better equipment utilization and faster cleaning. Realize productivity improvements of up to 400% over walk-behind sweepers and extractors. Clean better and clean smarter while reducing your total cost of ownership.

You want flexibility.

Only one machine offers the versatility to care for your carpeted surfaces according to your facility's cleaning requirements. The Advance ES4000 lets you perform everything from daily touch ups of high traffic areas, to low-moisture cleaning, to periodic restorative extraction. All with complete control, simple, One-Touch™ operation and higher levels of productivity in one machine.

You want value.

Why maintain multiple machines to handle carpets when one capable machine can do it all? The ES4000 delivers value every day. Compare overall cost of ownership of the ES4000 with the carpet maintenance equipment you need now and you'll find a Total Carpet Care solution.



AquaSpot®

Carpet Spot Extractor

- A clear recovery tank with 2 dumping ports allows for ease of cleaning
- Exhaust air is filtered for maintaining indoor air quality
- Optional cart is designed with a tray and holds cleaning accessories



HydroDry™

Dryer

- Durable rotocast polyethylene stackable blower with a 0.5 hp motor
- 3 speed settings to select the right amount of air movement
- Blower can be angled in three different positions to direct air as needed
- 25 foot power cord to reach those distant outlets



ES4000

Rider Sweeper Extractors

- Total Carpet Care System
- 28 inch cleaning path
- 28 gallon solution and recovery tanks
- 4 cleaning modes – Dry-Sweep, Interim, Pre-Treat, Restorative
- Onboard open chemical system
- Brushes and vacuum shoes are removable without tools
- Superior 63 inch (160 cm) turning radius
- 65 dB A sound level

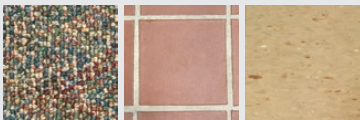


Advance Sweepers: the Fast Track to a Clean Sweep

From walk-behind to rider models, Advance sweepers provide superior cleaning results in a wide variety of applications and floor surfaces. The fast and efficient Terra® 28B is much more productive and effective, than standard push broom sweeping. Rated at only 59 dB A it is one of the quietest battery operated sweepers in the industry. With A.S.A.P. (All Surface All Purpose) sweeping technology, the sweeping efficiency is maximized on the Terra® 28B when the operator transitions between hard and soft floor types. The Terra® 4300B is built for industrial strength sweeping – inside and out.

The Advance SW900™ walk-behind sweeper efficiently picks up dust and debris whether indoors or outdoors. With the addition of the optional Mix 5 broom (pn 1465216000), operators can easily transition from soft to hard floor applications.

Advance sweepers feature tools-free maintenance and easy broom adjustments with operator-friendly controls. Recent product innovations include onboard battery chargers, maintenance-free gel batteries, and enhanced filtration.



Terra® 28B

Walk-Behind Sweeper

- 28 inch sweep path
- Maintenance free gel battery standard
- Half as loud as most vacuums at 59 dB A
- Standard onboard battery charger
- Tools-free removable brooms and hopper
- Rugged construction for carpet or hard floor applications



SW900™

Walk-Behind Sweeper

- 33 inch sweep path
- Independent side broom control on handle
- Direct throw sweeper design
- Superior dust control
- Battery operated with up to 3 hours of run-time on a single charge
- Standard onboard battery charger
- Tools-free removable brooms and hopper
- Rugged construction for carpet or hard floor applications

PUMP-UP YOUR PRODUCTIVITY with Advance Cleaning Equipment

 Advance Terra® 4300B	 Advance Terra® 28B	 36 Inch Push Broom
60,720 sq ft	20,000 sq ft	5,600 sq ft

Based on 1 hour cleaning time.



Terra® 4300B

Rider Sweeper

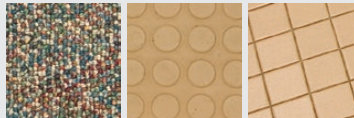
- 46 inch sweep path, battery operated
- Simple, ergonomic and intuitive operator interface
- 20% gradeability while sweeping
- Rugged construction for carpet or hard floor applications

Advance Floor Machines Feature Easy Maintenance

Clean floors, both hard and soft, with a floor machine from Advance. The standard 175 rpm machines vary in size from 13-20 inches with motors ranging from 1 horsepower to 1.75 horsepower. All machines come standard with a safety switch and pad driver. A versatile two-speed floor machine operates at 175 and 275 rpm.

The FM800 offers operators powerful orbital scrubbing technology in a floor machine. The FM800 is the ideal orbital floor machine for reaching small areas and detail work that larger auto scrubbers may not be able to reach. Orbital scrubbing technology is ideal for the chemical-free removal of floor finish in preparation for re-finishing.

To customize the cleaning capabilities of each machine, Advance provides a full line of accessories, including solution tanks, and a complete selection of pads and brushes. Advance floor machines operate efficiently, reliably and productively. Advance floor machines are made to the high standard of quality that you have come to expect from Advance.



Pacesetter™ 20TS

Two-Speed Floor Machine

- Versatile 20 inch two-speed floor machine
- 1.5 hp DC motor
- 66 frame motors run at 180 and 320 rpm
- Ergonomic molded handles for safety and comfort
- Pad driver included



Pacesetter™

13/17/20/17HD/20HD/20SD

Floor Machines

- 13, 17 and 20 have 1.0 hp, 66 frame motors at 175 rpm
- 17HD and 20HD have 1.5 hp, 66 frame motors at 175 rpm
- 20SD is 20 inches with 1.75 hp, 66 frame motor at 175 rpm
- Ergonomic molded handles for safety and comfort
- Pad driver included



FM800™

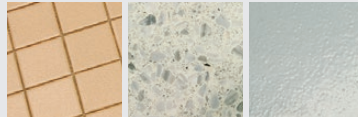
Orbital Floor Machine

- 1,725 ¼ inch orbits per minute
- 1 hp motor
- Heavy cast components
- Chemical-free removal of floor finish
- Low 58 dB A sound level
- Precision balanced counter weight and oversized drive bearing
- Ergonomic handle with safety interlock offers operator comfort and protection
- Optional 4 gallon solution tank for more demanding applications



Advance Burnishers Add Luster to Floors

Advance offers a complete line of burnishers available in cord electric, propane, and battery power sources. Two cord electric models offer exclusive, patented technology to eliminate any operational variances for almost foolproof burnishing. The dust collection model provides superior dust collection enabling one pass burnishing. Four propane models are available in two different sizes to match your application. Three battery burnishers are available: two walk-behind models and a rider. The walk-behind models are built to last, offering dual dust collection bags and adjustable pad pressure. Advance introduced the battery rider burnisher to the industry to further increase burnishing productivity. Rely on Advance burnishers for all of your burnishing needs.



Advolution™ 20

Cord Electric Burnisher

- 20 inch burnishing path, 1,500 r.p.m.
- Flex Floor Technology for consistent even shine even on unlevel floors
- Patented gas spring provides optimal head pressure for maximum gloss performance
- EZ Store™ folding handle
- Rotating cord hook
- 75 foot safety yellow cord with hospital grade plug



Advolution™ 20XP

Cord Electric Burnisher

- 20 inch burnishing path, 2,000 r.p.m. with dust control
- Flex Floor Technology for consistent even shine even on unlevel floors
- Patented gas spring provides optimal head pressure for maximum gloss performance
- EZ Store™ folding handle
- Rotating cord hook
- 75 foot safety yellow cord with hospital grade plug
- Dual Port Dust Bag



PBU Series 21 & 27

Propane Burnishers

- 21 inch and 27 inch size configuration
- Powerful 603cc Kawasaki V-Twin engines
- Rugged one piece cast deck & frame - powder coat finish resists damage
- 80% safety fill type propane tank
- Easy access to change pads
- Optional Dust Control models with centrifugal clutch and CARB Gard™ monitor emissions
- The operator throttle is conveniently located on the handle
- Ergonomic handle for operator comfort

Advolution™ 2710 Maximizes the Shine in Less Time

The Advolution™ 2710 battery-powered rider burnisher from Advance is designed around a front steering system – accepted industry-wide as being the easiest to control and maneuver. A unique One-Touch™ control pad simplifies operator training and equipment operation.

The Advolution™ 2710 rider burnisher increases operator productivity with its ride-on capability and extended battery run-time. The burnishing pad operates at a speed of 1,600 rpms and utilizes three different pressure settings. On average, battery run-time on this rider burnisher allows the operator to burnish over 30,000 square feet (9,144 meters) per hour. Maximum tested productivity is even higher, with results exceeding 135,000 square feet (41,148 meters) on a single battery charge.



BU800™ 20B & 20BT

Battery-Powered Burnishers

- Pad assist model 20B or powered traction model 20BT available
- Flex Floor Technology for consistent, even shine even on unlevel floors
- Best passive dust control in the market, which helps improve indoor air quality
- Safety switch in pad change position
- Onboard battery charger standard
- Optional active dust control is available with the addition of an Adgility hip-style vacuum to the front of the machine



Advolution™ 2710

Battery-Powered Rider Burnisher

- Ultra high productivity, six 6 Volt/395 Ah batteries
- 1,750 rpm, 3.25 hp motor produces an exceptional shine
- One-Touch™ burnishing with three pad pressure settings
- Passive dust control standard; active dust control optional for added filtration

Why walk when you should ride?

Advolution™ 2710



34,375
sq ft

Advolution™ 20XP



10,000
sq ft

- Riding is safer than walking because of better sight lines
- Employees are less fatigued, which means they can clean longer and more areas
- Rider speed is faster than walking — employees can clean more square footage in less time!

The Result? Increased productivity that drives down the cost to clean

Automatic Walk-Behind & Stand-On Scrubbers



The Right Scrubber for a Spotless Facility

Advance leads the industry with the most innovative designs, unique features, and highest productivity in floor scrubbers today. That means more cleaning flexibility, longer machine run-time, easier operation, and maximum operator safety. All of Advance's automatic walk-behind and stand-on scrubbers leave floors clean and dry in just one pass, increasing safety and productivity. Whether you're moving from mop-and-bucket cleaning to a small scrubber, or you require a high performance machine with the widest scrub path and newest technology available – Advance has the machine for you. Advance scrubbers offer Smart Solutions™ flow rate, onboard battery chargers, easy to use operator controls, and many more features for performance and safety. Most Advance scrubbers operate at a sound level of 65 dB A or less, making them ideal for daytime cleaning. They are also a great addition to any green cleaning program.



Micromatic™ 14E

Automatic Scrubbers

- 14 inch scrub path, cord-electric
- Cylindrical scrub brush operates at 1,000 rpm
- Front and rear squeegee system picks up solution in all directions
- 3 gallon "lift-out" solution and recovery tanks



SC450™

Automatic Scrubbers

- 20 inch disc scrub path
- 10.5 gallon solution tank
- 11.9 gallon recovery tank
- Onboard Battery Charger
- Tools-free removal of squeegee and squeegee blades
- Wrap-around ergonomic handle system provides operator comfort
- Variable pad driven assistance
- Center-pivot designed squeegees provide 100% water pickup on turns
- Safety on/off switch is located on the handle for operator convenience



SC351™

Battery Operated Micro Scrubber

- Patented rotating deck with integrated squeegee allows for forward and backward scrubbing
- Simple and intuitive controls
- Four operating modes
- Compact design and foldable handle for easy storage
- Best in class 64 dB A sound level
- 14.5 inch scrubbing width
- "Lift-out" solution and recovery tanks
- 2.5 gallon solution tank
- 3 gallon recovery tank



Adfinity™ X20R REV™

Random Orbital Floor Scrubber

- 20 inch scrub path
- Random Orbital Scrubbing technology
- EcoFlex™ System standard
- Variable scrub pressure
- One pass, uniform floor finish removal
- 10.5 gallon solution and recovery tanks
- Super quiet 68.5 dB A sound level
- Traction drive
- Onboard charger



SC400™

Automatic Scrubbers

- 17 inch scrubbing width
- Cord-electric and battery models
- Click-off/Click-on scrub heads
- Smart Solutions™ solution control
- 6 gallon solution and recovery tanks
- Simple, intuitive controls
- Offset and low profile scrub head for superior edge cleaning
- Center-pivot squeegee system
- Foot-activated squeegee lift
- "Break-away" rear squeegee
- Brush holder on the front of the machine enables ease of transport



SC1500™ REV™ & Disc

Stand-On Scrubbers

- 20 inch scrub path
- Dual Random Orbital Scrubbing technology or traditional disc
- Extremely maneuverable and compact
- Productivity of a rider scrubber and cost-efficiency of a walk-behind scrubber
- EcoFlex™ System standard
- Two scrub pressures up to 88 lb
- Quiet mode for daytime cleaning
- 12 gallon solution tank
- 12.5 gallon recovery tank
- Debris catch cage standard
- Onboard charger standard

Features that Make Scrubbing a Breeze

Many of our automatic scrubbers feature One-Touch™ operator controls for the easiest operation. They also feature an onboard battery charger for the quickest, most convenient charging option. To save water and detergent, we've designed all of our scrubbers with Smart Solutions™. This water-saving system guides the operator to select the right water and chemical flow rate for their cleaning needs, thereby optimizing water and chemical use. EcoFlex™ System is available on Adfinity™, SC750™, SC800™, SC1500™, Warrior™, Advenger® and Adgressor® models. EcoFlex™ System models have One-Touch™ activation for an on-demand cleaning burst of power. The Advance line of walk-behind scrubbers is also equipped with features that make them easy to maintain. The Micromatic™ 14E and SC351™ feature "lift-out" solution and recovery tanks, while the rest of our scrubbers feature a tip-back tank for full accessibility.



Advfinity™ 20D/X20D/X20C/X24D available with EcoFlex™ System

Automatic Scrubbers

- 20 and 24 inch disc and 20 inch cylindrical scrub paths, with traction drive
- 14.5 gallon solution and recovery tanks
- Smart Solutions™ Flow Rate
- EcoFlex™ Onboard Detergent Dispensing System (X20D, X20C, X24D)
- Onboard Battery Charger
- Variable Pad Pressure
- Interchangeable Scrub Decks
- Tools-free removal of squeegee and squeegee blades



SC750™ REV™ with EcoFlex™ System

Dual Random Orbital Floor Scrubber

- 28 inch disc scrub path
- Dual random orbital scrubbing technology
- Advance's innovative EcoFlex™ System
- Ultra low flow rate for high productivity
- 3.5 hours of scrubbing on a single tank max
- One-Touch™ scrubbing
- 170 pounds of down pressure max
- Onboard charger
- 21 gallon (80 L) tanks



SC750™ & SC800™ available with EcoFlex™ System

Automatic Scrubbers

- Available in 26, 28 or 34 inch disc and 28 inch cylindrical scrub paths
- Smart Solutions or EcoFlex™ System on all machines
- Green cleaning and high productivity technology
- SC750 with 21 gallon (80 L) solution and recovery tanks
- SC800 with 25 gallon (95 L) solution and recovery tanks
- Self adjusting skirt on disc machines
- Heavy duty scrubbing performance



Warrior™ with EcoFlex™ System

Automatic Scrubbers

- Available in 28 and 32 inch scrub paths
- Tools-free interchangeable scrub decks
- Click-off disc scrub brushes
- 30 gallon solution and recovery tanks
- Tools-free removable nose cone
- EcoFlex™ System reduces environmental impact and detergent costs



34 RST

Automatic Scrubbers

- 34 inch scrub path
- One-Touch™ scrubbing
- 250 lb down pressure max
- Shelf charger standard
- Tools-free removable nose cone
- Simple and intuitive controls
- Whisper-quiet 69 dB A sound level
- Ultra-Flow™ squeegee system

Rider Scrubbers

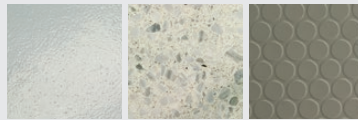


Choose a Rider Scrubber for Increased Productivity

Advance has rider scrubbers suitable for cleaning small confined areas to large applications. The SC3000™ features a compact design, and provides user-friendly, maneuverable operation in multiple cleaning applications—including those with limited access. The SC3000's SafetyGlide™ Deck eliminates wasted time and money spent on making adjustments and replacing side skirts. Simply turn the steering wheel; as the machine turns, the deck automatically moves in line with the path of the rear squeegee, resulting in 100% water pick-up.

Need to clean large areas fast? The Advenger® rider scrubber can clean up to 39,424 square feet an hour and features a 28 gallon solution tank and 29 gallon recovery tank, which extend cleaning time. Your operators will love the Advenger for its ride-on design and low sound level. With an industry leading 63 inch aisle turning radius and the ability to fit through a standard doorway, the Advenger rider scrubber can go anywhere. For deep scrubbing needs, the Advenger® REV™ with Dual Random Orbit Scrubbing Technology can also remove floor finish in a single pass.

The Advance 2800 ST and 3400 ST scrubbers deliver high performance results on a back-to-basics rider-scrubber platform. Manual control of the scrub deck and squeegee replace intricate electronics to keep operation simple without sacrificing performance.



For even bigger cleaning jobs, Advance's Adgressor® rider scrubber is built tough, offering scrub deck options of either 35 or 38 inches wide and cleaning up to 46,200 square feet per hour. Both the Advenger and Adgressor offer interchangeable scrub decks that let you change between disc and cylindrical decks, for maximum cleaning flexibility.



SC3000™

Compact Rider Scrubber

- 26 inch scrub path
- SafetyGlide™ deck automatically moves in the direction of turn
- Standard EcoFlex™ System reduces environmental impact and detergent costs
- 21 gallon solution and recovery tanks
- 65 and 61 dB A sound levels
- Integrated squeegee hanger
- Debris catch cage
- Onboard charger standard



Advenger®

Rider Automatic Scrubbers

- Tools-free interchangeable scrubs decks – 28 inch (71 cm) REV™, 28 inch (71 cm) and 34 inch (86 cm) disc and 28 inch (71 cm) cylindrical
- Dual Random Orbit Scrubbing Technology – REV™ model
- One pass, uniform floor finish removal – REV™ model
- EcoFlex™ System reduces environmental impact and detergent costs
- Standard low-flow scrubbing mode
- 28 gallon (106 L) solution tank and 29 gallon (110 L) recovery tank with Total Clean® technology
- One-Touch™ scrubbing with calibrated brush pressure and solution flow



2800 ST & 3400 ST

Rider Scrubbers

- Available with 28 inch (71 cm) and 34 inch (86 cm) scrub decks
- 28 gallon (106 L) solution tank and 29 gallon (110 L) recovery tank with Total Clean® technology
- Manual control of the scrub deck and rear squeegee eliminates complicated control boards
- Simplified one button control panel with minimal electronics



Adgressor® & Adgressor® with EcoFlex™ System

Rider Automatic Scrubbers

- Available in 35 or 38 inch disc scrub paths
- Easy to clean 42 gallon solution and recovery tanks
- 36 Volt battery system
- Rugged design with heavy gauge steel chassis and metal bumper
- Optional EcoFlex™ System reduces environmental impact and detergent costs available on 28 and 32 inch sizes
- Battery watering system standard on EcoFlex System models; Kit available as an option on non EcoFlex System machine

Flexibility for Every Kind of Clean

EcoFlex™ System lets you clean green and still meet the highest expectations for clean floors. With the industry's most flexible floor-scrubber technology, you can develop a sustainable cleaning routine and quickly adjust to whatever the job demands. Be prepared to get more out of your budget, clean with less impact to the environment and maintain clean floors when you do.

Operators can quickly and easily select the right blend of pad pressure, water and detergent to tackle any cleaning challenge. Here are just a few of the flexible cleaning modes:

- **Water Only** – Perfect for removing surface dirt and maintaining the clean look of floors. Water-only mode eliminates the impact of detergents on the environment and reduces cleaning costs.
- **Ultra-low Detergent** – Well suited for routine cleaning where a small amount of green-certified detergent will do the trick. Water and detergent are dispensed separately at the scrub deck, eliminating solution waste.
- **Standard Detergent** – The tough cleaning you expect. At standard detergent, pad pressure and flow rate, you'll have a combination powerful enough to pull stubborn dirt, grease, and oil from the surface.
- **Burst of Power** – For deep, restorative cleaning or unexpected challenges. EcoFlex's burst of power temporarily increases your machine's pad pressure, detergent use and flow rate at the touch of a button.



ecoflex™ system



Flexible

Different areas, floor types and facilities need different cleaning. With the ability to easily select the right blend of pad pressure, water and detergent, you can tackle any cleaning challenge. Effortlessly switch between water-only cleaning or different cleaning intensities at the touch of a button. User-friendly controls let you add extra muscle for heavily soiled areas or on tough-to-clean surfaces such as porous or grouted floors.

Green

Cleaning green with the EcoFlex System is efficient and contributes to building sustainability. The flexibility to develop a cleaning routine that works for your facility and to make on-the-fly adjustments will help you get the most out of all of your resources — from water and detergent to time and equipment.

Clean

Maintaining a clean, healthy indoor environment for you and the people in your building is hassle-free with EcoFlex. Detergent use, pad pressure and flow rate are right at your fingertips. The controls and operation are so simple that operators won't have to hesitate to make adjustments for higher sanitary standards, different surface types or unexpected cleaning challenges.



Advance Wet/Dry Vacuums for Daily Use

Wet messes, dry dirt, or somewhere in between, Advance has the right wet/dry tank vacuums for almost any daily cleaning challenge.

Advance VL500™ wet/dry vacuums are designed to accommodate virtually any cleaning requirement. Available in three models—9, 14 and 19 gallon tank configurations—the VL500 wet/dry vacuum applications range from small office environments to large education and healthcare facilities. Designed with a superior filtration system, easy-to-use features and multiple accessories, operators are guaranteed to find a wet/dry vacuum to fit their cleaning program.

With three unique models to select from, the VL500 series delivers unprecedented cleaning flexibility. Equipped with a front-mount squeegee and 19 gallon tank, the VL500-75 is ideal for picking up wet matter when stripping with floor stripper and a floor machine. Plus, an exclusive ERGO “tip n pour” design makes wet pick-up and emptying easy. For emergency spills and floods, the VL500-55 delivers the power and functionality when you need it. Featuring a hose, wand, squeegee floor tool, brush floor tool and optional front-mount squeegee, you can quickly



clean up any unwanted messes. When dirt or dust is the primary issue, the VL500-35 offers quality filtration and dust capture, in addition to crevice and dusting tools. Operators can also employ the VL500-35 for wet applications.



VL500™

Wet/Dry Tank Vacuums

- Available in 9, 14 and 19 gallon tank sizes
- Unique filter system protects the motor from water, while ensuring complete wet and dry filtration
- Front mount squeegee standard on VL500-75 optional on VL500-55
- Patent pending ERGO “tip n pour” design is available on VL500-75 and standard “tip n pour” is available on the VL500-55
- Powerful 1,100 Watt motor, 101 CFM
- 50 foot power cord
- Features a variety of standard and optional accessories, including: hose, wand, squeegee floor tool, brush floor tool, crevice tool, dusting tool and front-mounted squeegee

Touchless Cleaning for Increased Productivity

Advance's All-Purpose Cleaning Systems offer touch-less cleaning that is up to three times faster than traditional methods. Advance's All Cleaner™ answers the call for an affordable, touch-less approach to cleaning restrooms and other areas with hard surfaces. You'll improve productivity and see better results – now that's smart cleaning.

When it comes to versatility, the All Cleaner makes the most of its small design. Its open chemical system allows use of any two chemical bottles (including green cleaning approved solutions) and controls the dilution rate for the proper application each time. And whether your bottle is round or rectangle, it will fit in the holding wells on the All Cleaner.

With the All Cleaner™, you'll save precious storage space in your equipment closet because of its compact size.

The All Cleaner™ XP has a powerful 500 psi pump. Combine the pump strength with the variable spray gun and you can attack the most challenging cleaning projects.



All Cleaner™ & All Cleaner™ XP

All-Purpose Cleaners

- Compact and maneuverable
- 20 gallon solution and 12 gallon recovery tanks
- 2 chemical metering system with universal chemical storage
- 200 psi application flow (All Cleaner™)
- 500 psi application flow (All Cleaner™ XP)
- Optional front mount squeegee for easy water pick-up
- Simple storage for recovery and solution hose
- Removable pallette contains all electrical components



Reel Cleaner®

All-Purpose Cleaner

- 25 gallon clean water tank
- Onboard storage for standard accessories
- Any shape chemical bottle fits on the machine
- Clean water gauge for emptying and monitoring tank
- Clam-shell design for ease of servicing
- 2 chemical metering system
- Low profile and compact design for ease of transporting

Increases productivity by 300% compared to manual wipe-downs.



By Hand
27
minutes



With Advance Reel Cleaner™
9
minutes



Adphibian™ Multi-Surface Extractor-Scrubber

Building service contractors and in-house cleaners need equipment solutions that meet the multiple cleaning demands they face today. The Advance Adphibian™ multi-surface extractor/scrubber is the answer. The Adphibian™ cleans both soft and hard floor surfaces. Maximum efficiency and flexibility are gained because cleaning staff are able to go from pre-spraying and extracting on carpeted floors, to scrubbing hard floors with just one machine.

Within 30 seconds, and with no tools required, the Adphibian's new patent-pending technology allows operators to switch between a full-functioning carpet extractor and a full-functioning cylindrical scrubber. And, the specially designed anti-microbial brushes are effective on all surface types.

Dust Magnet™ Dry Dust Mopping System

Advance's Dust Magnet™ is a statically charged dry dusting system that attracts dust like a magnet. Disposable dusting sheets eliminate the mess, laundry and chemical expense you get with other dust mops.



Adphibian™

Multi-Surface Extractor-Scrubber

- Full function extractor and scrubber with AXP™ Onboard Detergent Dispensing System
- Single deck, less than 30 seconds to change from extracting to scrubbing
- CRI SOA Approved Deep Cleaning Extractor in both *LIFT*™ low-moisture and restoration cleaning modes
- *LIFT*™ Technology for low-moisture cleaning
- Dual, anti-microbial counter rotating brushes with debris collection hopper
- Brushes, squeegee and vacuum shoes are removable without tools



Dust Magnet™

Dry Dust Mopping Systems

- Dry dusting system uses disposable dusting sheets
- Super lightweight aluminum system
- Simple static electricity attracts dust and holds it
- 23, 46 and 59 inch wide cleaning path options
- Sheets come in convenient pre-cut boxes of 200, or a continuous roll of 100 sheets



Keeping your equipment working effectively is essential for superior cleaning. Advance provides manufacturing parts and components through Nilfisk-Advance Parts to help keep your Advance products working at peak performance. Our parts are designed and built for our machines so they can be counted on to maintain our machines. They are value priced and quality built. By choosing Nilfisk-Advance Parts, you can be certain you're getting the quality part you need for your machine.

Sustainability

Nilfisk-Advance's fundamental attitude to the working environment and pollution is in accordance with the first principle of the United Nations conference declaration on Environment and Development (Rio, 1992):

"People are entitled to a healthy and productive life in harmony with nature."

Our environmental policy states, among other things:

- the employees shall have a safe, healthy, motivating and inspiring working environment
- the utilization of resources shall be continuously improved
- our production must be controlled, including development, sourcing and deliveries, in order to minimize environmental impact

We actively participate in manufacturing practices that are environmentally friendly, including:

- recycling and reuse of our rotomold plastic, giving it new use as battery tray housing
- recycling of all metals, aluminum, cardboard and batteries
- efficient lighting in our corporate and manufacturing facilities that use less electricity
- equipment design technology that minimizes the amount of water needed to clean



Advance products are manufactured by Nilfisk-Advance Inc., the world's largest designer and manufacturer of high quality commercial and industrial floor maintenance equipment.

Quality

A quality approach to cleaning is the commitment we make to every one of our customers. Along with each machine comes pride, craftsmanship, innovative technology, professional expertise and an international network of parts, maintenance and service support professionals.

Reducing the Cost to Clean

Every aspect of our business revolves around creating cleaning solutions that generate superior cleaning results, increase productivity and reduce the cost of ownership. The result is superior cleaning products that drive down the cost of cleaning. The pride we take in production and service will become your pride of ownership when you buy Advance equipment.

At Advance, we are defining cleaning innovation.

14600 21st Avenue North
Plymouth, MN 55447-3408
www.advance-us.com
Phone 800-850-5559
Fax 800-989-6566

240 Superior Boulevard
Mississauga, Ontario, Canada L5T 2L2
www.nilfisk-advance.ca
Phone 800-668-8400
Fax 800-263-5111

