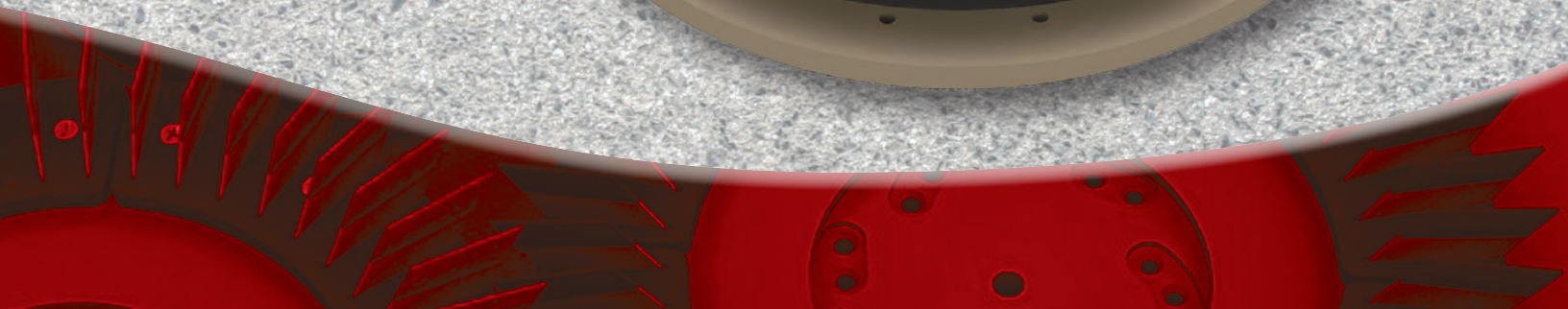
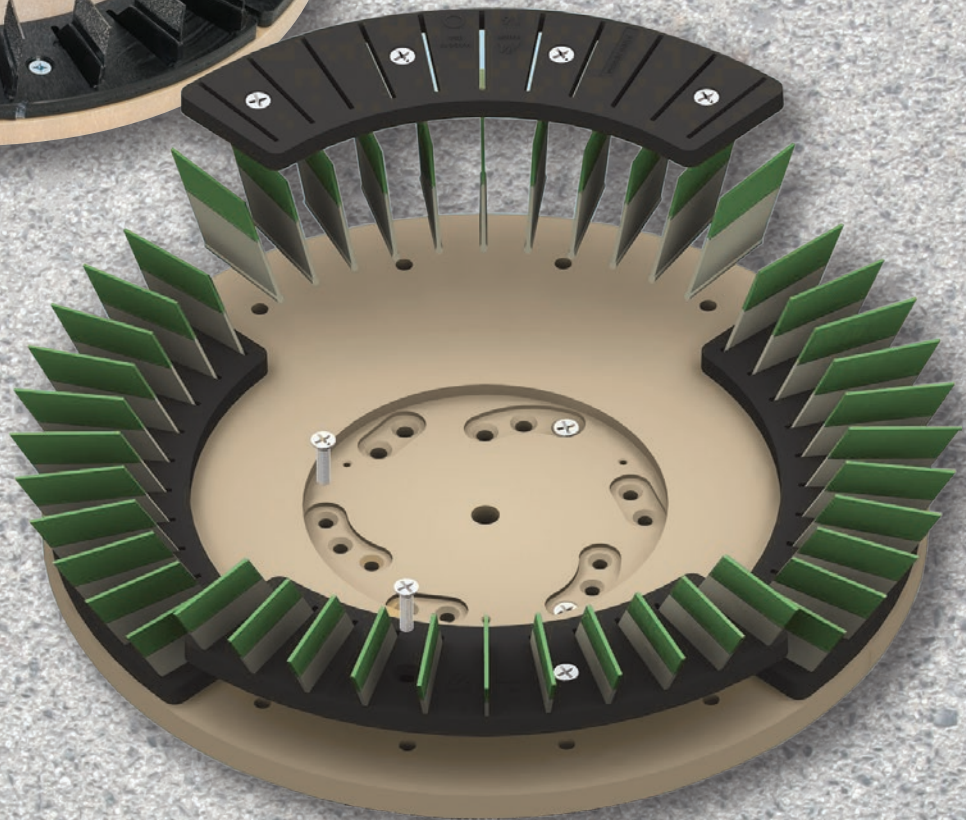




DIAMABRUSH™

A Revolution in Floor Restoration Technology



Diamabrush™ Restoration System

A revolutionary floor restoration technology using standard floor machines or auto-scrubbers for the following tasks:

- **Concrete Polishing**
- **Aggressive Cleaning**
- **Prep and Restoration**

Tool Application Chart

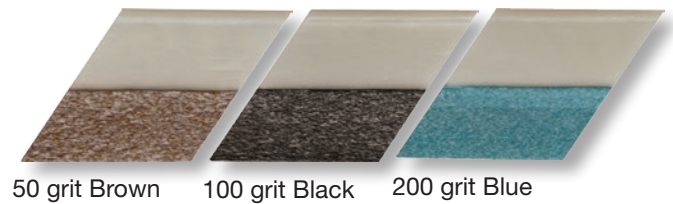


TOOL APPLICATIONS	COATINGS REMOVAL TOOL	CONCRETE PREP PLUS TOOL -25 GRIT-	CONCRETE PREP PLUS TOOL -100 GRIT-	POLY 50	POLY 100	POLY 200	POLY 400	POLY 1000	POLY 2000
REMOVAL	Removes mastic, carpet glues, paints, epoxy and thin-set	Removes paints and thin coats of epoxy-Preps floor for epoxy, glues, paints (6-8 passes)							
PREP		Preps floor for epoxy, glues, paints							
POLISHING (CONCRETE & TERRAZZO)			Preps floor for Diamabrush Polishing System	Step One of polishing (6-8 passes) Suggested starting grit if floor is 5+ years old	Step Two of polishing (6-8 passes)	Step Three of polishing (6-8 passes) Suggested starting grit if floor is 3-4 years old	Step Four of polishing (6-8 passes)	Step Five of polishing (6-8 passes) Suggested starting grit if floor is 1-2 years old	Step Six of polishing (6-8 passes) Use as maintenance brush
SAND & RECOAT				Preps existing epoxy floor for a recoat	Preps existing epoxy floor for a recoat				
AGGRESSIVE CLEANING				Removes heavy build-up	Removes medium build-up	Removes medium build-up			

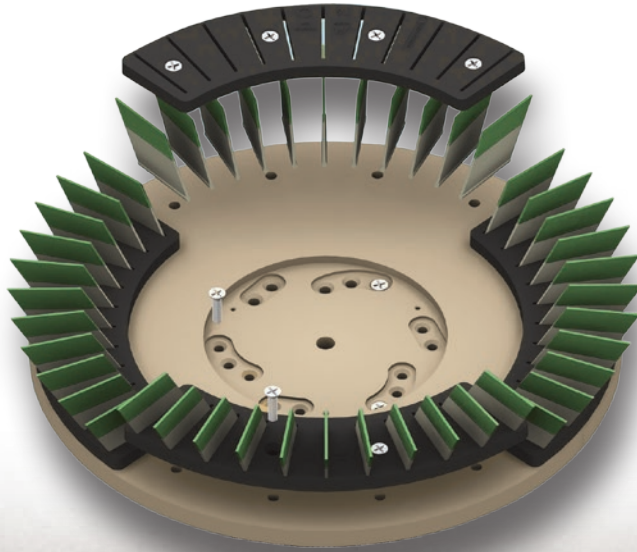


DIAMABRUSH™

Aggressive Cleaning



The polymer tools in the Diamabrush System can also be used for aggressive cleaning. Choose either the 50 grit, 100 grit, or 200 grit polymer tools to achieve a clean surface that was dirty or marred. For the dirtiest, grimeiest concrete, choose the 50 grit Brown. For moderately dirty floors, the 100 grit Black or 200 grit Blue will be appropriate. Using the same Diamabrush Concrete Polymer Tool as an aggressive cleaning tool maximizes your investment, making the Diamabrush System even more cost-effective.



- Remove embedded grease, grime, and rubber without the use of harmful chemicals.
- Deep cleanse your industrial/commercial concrete floor.
- Simultaneously clean and polish your floor to a “like new” finish.
- Work more efficiently – the Diamabrush Aggressive Cleaning System lasts up to 100,000 sq. ft.
- Easily maintain your floor by using your own cleaning equipment.

The Aggressive Cleaning System features money-saving replaceable blades.

Diamabrush™ Prep and Restoration Tool

The Diamabrush Prep and Restoration Tool enables you to prepare bare concrete or recoat epoxy or urethane floors with ease. Diamabrush is a *greener* floor preparation alternative compared to the waste generated by typical floor sanding techniques. The wet prep process using floor scrubbers avoids airborne dust thereby eliminating secondary cleanup. This tool cleans and creates a perfect profile for coating adhesion and helps you remove deep scratches and embedded dirt using your own cleaning machines. The true value of the Prep and Restoration Tool is that it prepares and cleans your surface in one simple step, saving you time and money.

Capable of lasting for up to 100,000 sq. ft., the Prep and Restoration Tool can be used wet or dry to remove dust. The patented diamond blades prevent the tool from becoming “gummed up,” a problem encountered with sanding machines. As with all Diamabrush tools, the Prep and Restoration Tool can be refurbished using replacement blades.



Diamabrush™ Concrete Polishing System

The Diamabrush Concrete Polishing System is unlike any conventional polishing system on the market. Beginning with the floor prep and progressing through a series of steps of concrete polishing, the Diamabrush Concrete Polishing System will work with standard floor buffers or Advance auto scrubbers. Once the multi-step process used to rejuvenate concrete floors is accomplished, the Diamabrush System actually continues to improve the look of your floor every time you clean and polish it—and at a fraction of the cost of “traditional” polishing. Nothing is required beyond your normal cleaning regimen.

The Diamabrush™ Concrete Prep Plus

The first step in the Diamabrush™ Concrete Polishing System involves abrading and leveling the surface to prepare it for polishing. The Diamabrush Concrete Prep Tool consists of a super tough 25 or 100 diamond grit that is bonded to steel blades overmolded in polymer. The flexible blades ensure the diamond abrasive tool remains in constant contact with the floor, regardless of imperfections including cracks or uneven floors. As you use the Concrete Prep Tool, multiple layers of diamonds on the blades are constantly exposed, maximizing tool life and effectiveness.

The patent pending Concrete Prep Tool can be refurbished by simply replacing the blades.

The Diamabrush logo is prominently displayed in the center, featuring the brand name in a bold, blue, sans-serif font with a stylized blue diamond shape integrated into the letter 'A'. The background of the bottom section of the page is a large, red, circular graphic that resembles a close-up of a diamond-encrusted surface, with numerous small, red, diamond-shaped elements scattered across it.

DIAMABRUSH™

Diamabrush™ Concrete Polishing Tools

Each step of the Diamabrush™ process is critical to achieving the desired results. As you progress through each grit tool, ensure the floor has uniformity in texture before proceeding to the next step. After completing the 400 grit step you will begin to notice a gloss starting to appear on the floor.



Step 1

Step 2

Step 3



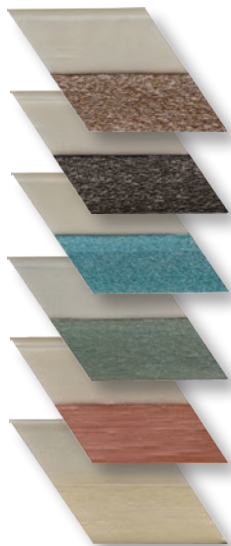
Use the 50 grit Brown



Use the 100 grit Black



Use the 200 grit Blue



Six Polymer Tools

The Diamabrush Concrete Floor Polishing System progresses with increasingly fine grit polymer inserts. Just like with the Concrete Prep Tool, each Concrete Polishing Tool includes flexible blades that allow the diamonds to remain in constant contact with the floor.

The polymer blades are designed with removable, slotted retainers. Instead of having to replace the entire tool due to wear and tear, simply order a blade replacement kit. All polymer blades are easily removed and replaced, which enhances the life of the tool.



By the time you reach the end of this process, your floor will have transformed into a beautiful, smooth, high polished surface. The multi-step process provides the flexibility for you to decide how many steps your surface needs. The number of passes you make with each grit and the level of gloss you wish to obtain will determine how you best use the system for your particular application.



Step 4

Step 5

Step 6



Use the 400 grit Green



Use the 1000 grit Red



Use the 2000 grit Tan



Cleaner Conditioner Hardener

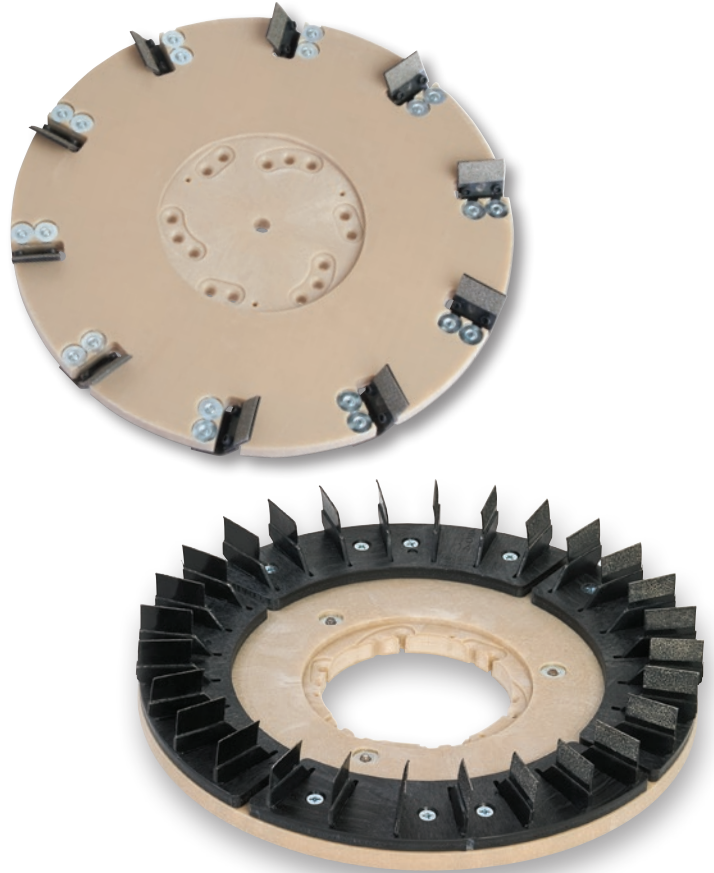
Specialty designed for concrete floors, terrazzo and other stone surfaces. 5-gallon container

- Maintains concrete floor hardness and shine
- Removes most common soils
- Flexible dilution for both surface and deep cleaning (64:1 or 32:1)
- Biodegradable

Diamabrush™ Coating Removal Tools

The Diamabrush™ Coating Removal Tool is the fastest, most effective tool for the removal of mastic, glues, adhesives, thin-set, and thin mil epoxies from concrete floors. Its patented design prevents the abrasive blades from loading up or clogging like other abrasive products, resulting in fast, consistent removal throughout the life of the blades.

- 10 times faster than manually scraping
- Limited surface contact during use
- Rigid, exposed diamond cutting surface creates a level floor with normal use
- No need for heavy, expensive and hard-to-use grinding equipment that often requires 480 3-phase power
- Designed to fit Pacesetter floor machines
- Features replaceable diamond blades



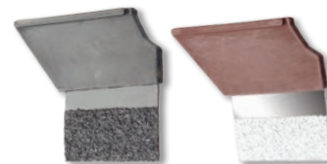
Coating Removal Tools

Nilfisk P/N	Description	Floor Machine
56383926	16 inch Mastic Removal Tool with Clutch Plate and 1- 1/2 inch Riser	Pacesetter 17 HD
56383930	16 inch - 25 Grit Prep Plus CCW	Pacesetter 17 HD
56383936	19 inch Mastic Removal Tool with Clutch Plate and 1- 1/2 inch Riser	Pacesetter 20HD, 20SD
56384220	19 inch - 25 Grit Prep Plus CCW	Pacesetter 20HD, 20SD

Blade Replacement Kits

Nilfisk P/N	Description	Qty
56383928	Mastic Blade Removal Replacement Kit	10
56384246	16 inch Prep Plus 25 Grit Blade CCW Kit	28
56384250	20 inch Prep Plus 25 Grit Blade CCW Kit	36

Specifications are subject to change without notice.



DIAMABRUSH™ Ordering Guide

Blade Wear Chart*

Blade Type	Average Sq Ft Range	Average Sq Meter Range
Coating Removal 25 Grit	1,500 – 15,000	140 – 1,400+
Prep Plus 25 Grit	10,000 – 50,000	1,000 – 4,650
Prep Plus 100 Grit	15,000 – 60,000	1,400 – 5,600
Polymer 50 Grit	25,000 – 75,000	2,320 – 7,000+
Polymer 100 Grit	25,000 – 75,000	2,320 – 7,000+
Polymer 200 Grit	35,000 – 100,000+	3,251 – 9,300+
Polymer 400 Grit	50,000 – 100,000+	4,645 – 9,300+
Polymer 1,000 Grit	75,000+	7,000+
Polymer 2,000 Grit	75,000+	7,000+

*Note all estimates are on average and actual results will vary based on surface conditions, softness or hardness of concrete. Numbers do not represent the minimum or maximum square footage that will be attained.

14 inch Scrubber Tools

Step	Nilfisk P/N	Description	Quantity Per Machine		
			SC750 - 28D	SC900 28D	Advenger 2805D**
1	56384211	25 Grit Prep Plus CW	1	1	1
	56384212	25 Grit Prep Plus CCW	1	1	1
2	56384213	100 Grit Prep Plus CW	1	1	1
	56384214	100 Grit Prep Plus CCW	1	1	1
3	56384223	50 Grit Polymer	2	2	2
4	56384224	100 Grit Polymer	2	2	2
5	56384225	200 Grit Polymer	2	2	2
6	56384226	400 Grit Polymer	2	2	2
7	56384227	1000 Grit Polymer	2	2	2
8	56384228	2000 Grit Polymer	2	2	2

14 inch Replacement Blade Kits

Nilfisk P/N	Description	Qty.
56384241	25 Grit Prep Plus CW	24
56384242	25 Grit Prep Plus CCW	24
56384243	100 Grit Prep Plus CW	24
56384244	100 Grit Prep Plus CCW	24
56384253	50 Grit Polymer	44
56384254	100 Grit Polymer	44
56384255	200 Grit Polymer	44
56384256	400 Grit Polymer	44
56384257	1000 Grit Polymer	44
56384258	2000 Grit Polymer	44

16 inch Scrubber Tools

Step	Nilfisk P/N	Description	Quantity Per Machine
			Adgressor 32D
1	56384533	25 Grit Prep Plus CW	1
	56384534	25 Grit Prep Plus CCW	1
2	56384535	100 Grit Prep Plus CW	1
	56384536	100 Grit Prep Plus CCW	1
3	56384537	50 Grit Polymer	2
4	56384538	100 Grit Polymer	2
5	56384539	200 Grit Polymer	2
6	56384540	400 Grit Polymer	2
7	56384541	1000 Grit Polymer	2
8	56384542	2000 Grit Polymer	2

16 inch Replacement Blade Kits

Nilfisk P/N	Description	Qty.
56384241	25 Grit Prep Plus CW	24
56384242	25 Grit Prep Plus CCW	24
56384243	100 Grit Prep Plus CW	24
56384244	100 Grit Prep Plus CCW	24
56384253	50 Grit Polymer	44
56384254	100 Grit Polymer	44
56384255	200 Grit Polymer	44
56384256	400 Grit Polymer	44
56384257	1000 Grit Polymer	44
56384258	2000 Grit Polymer	44

17 inch Scrubber Tools

Step	Nilfisk P/N	Description	Quantity Per Machine			
			SC800 - 34D	SC900 - 34D	Advenger 3405D**	SC6000 - 34D
1	56384215	25 Grit Prep Plus CW	1	1	1	1
	56384216	25 Grit Prep Plus CCW	1	1	1	1
2	56384217	100 Grit Prep Plus CW	1	1	1	1
	56384218	100 Grit Prep Plus CCW	1	1	1	1
3	56384229	50 Grit Polymer	2	2	2	2
4	56384230	100 Grit Polymer	2	2	2	2
5	56384231	200 Grit Polymer	2	2	2	2
6	56384232	400 Grit Polymer	2	2	2	2
7	56384233	1000 Grit Polymer	2	2	2	2
8	56384234	2000 Grit Polymer	2	2	2	2

17 inch Replacement Blade Kits

Nilfisk P/N	Description	Qty.
56384245	25 Grit Prep Plus CW	28
56384246	25 Grit Prep Plus CCW	28
56384247	100 Grit Prep Plus CW	28
56384248	100 Grit Prep Plus CCW	28
56384253	50 Grit Polymer	44
56384254	100 Grit Polymer	44
56384255	200 Grit Polymer	44
56384256	400 Grit Polymer	44
56384257	1000 Grit Polymer	44
56384258	2000 Grit Polymer	44

Specifications are subject to change without notice.

**Advengers require special side skirt kits for proper clearance.

18 inch Scrubber Tools			Quantity Per Machine	Deck Position
Step	Nilfisk P/N	Description	7765	
1	56384543*	25 Grit Prep Plus CW	2	Center and Right Left
	56384544*	25 Grit Prep Plus CCW	1	
2	56384545*	100 Grit Prep Plus CW	2	Center and Right Left
	56384546*	100 Grit Prep Plus CCW	1	
3	56384547	50 Grit Polymer	3	All
4	56384548	100 Grit Polymer	3	All
5	56384549	200 Grit Polymer	3	All
6	56384550	400 Grit Polymer	3	All
7	56384551	1000 Grit Polymer	3	All
8	56384552	2000 Grit Polymer	3	All

*Caution: Ensure deck rotation switch is in position to achieve desired rotation.

18 inch Replacement Blade Kits			
Nilfisk P/N	Description	Qty. Kits	Qty./Kit
56384241	25 Grit Prep Plus CW	3	24
56384250	25 Grit Prep Plus CCW	1	36
56384243	100 Grit Prep Plus CW	3	24
56384252	100 Grit Prep Plus CCW	1	36
56384253	50 Grit Polymer	3	44
56384254	100 Grit Polymer	3	44
56384255	200 Grit Polymer	3	44
56384256	400 Grit Polymer	3	44
56384257	1000 Grit Polymer	3	44
56384258	2000 Grit Polymer	3	44

20 inch Scrubber Tools			Quantity Per Machine	
Step	Nilfisk P/N	Description	SC6000 40D	SC6500 40D
1	56384215	25 Grit Prep Plus CW	1	1
	56384216	25 Grit Prep Plus CCW	1	1
2	56384217	100 Grit Prep Plus CW	1	1
	56384218	100 Grit Prep Plus CCW	1	1
3	56384557	50 Grit Polymer	2	2
4	56384558	100 Grit Polymer	2	2
5	56384559	200 Grit Polymer	2	2
6	56384560	400 Grit Polymer	2	2
7	56384561	1000 Grit Polymer	2	2
8	56384562	2000 Grit Polymer	2	2

20 inch Replacement Blade Kits		
Nilfisk P/N	Description	Qty.
56384249	25 Grit Prep Plus CW	36
56384250	25 Grit Prep Plus CCW	36
56384251	100 Grit Prep Plus CW	36
56384252	100 Grit Prep Plus CCW	36
56384253	50 Grit Polymer	44
56384254	100 Grit Polymer	44
56384255	200 Grit Polymer	44
56384256	400 Grit Polymer	44
56384257	1000 Grit Polymer	44
56384258	2000 Grit Polymer	44

20 inch Single Disc Machine Tools			Quantity Per Machine
Step	Nilfisk P/N	Description	Pacesetter 20SD
1	56384220	25 Grit Prep Plus CCW	1
2	56384222	100 Grit Prep Plus CCW	1
3	56384235	50 Grit Polymer	1
4	56384236	100 Grit Polymer	1
5	56384237	200 Grit Polymer	1
6	56384238	400 Grit Polymer	1
7	56384239	1000 Grit Polymer	1
8	56384240	2000 Grit Polymer	1

Specifications are subject to change without notice.



Blade Retainers

Nilfisk P/N	Description	Qty.
56384260	DB-Poly Blade Retainer - 14 inch	1
56384261	DB-Poly Blade Retainer - 17 inch	1
56384262	DB-Poly Blade Retainer - 20 inch	1
56384263	DB-Prep Plus Retainer - 14 inch	1
56384264	DB-Prep Plus Retainer - 17 inch	1
56384265	DB-Prep Plus Retainer - 20 inch	1



Accessories

Nifisk P/N	Description	Qty
56365777	Brush Driver Lug	3
56506006	Clutch Plate	1
56383697	Advenqer Side Skirt Extender Kit	1

Densifier Cleaner

Nilfisk P/N	Description	Size
56384259	DB Cleaner Conditioner	5 gallon pail

Specifications are subject to change without notice.

Diamabrush™ Display Tool

Nilfisk P/N	Description
56384266	Sample tool showing concrete polishing tools

Notes

This image shows a single sheet of white paper with horizontal ruling lines. The lines are evenly spaced and run across the width of the page. There are no margins, text, or other markings on the paper.



9435 Winnetka Avenue North
Brooklyn Park, MN 55445
www.advance-us.com
Phone 800-850-5559
Fax 800-989-6566

240 Superior Boulevard
Mississauga, Ontario, Canada L5T 2L2
www.nilfisk-advance.ca
Phone 800-668-8400
Fax 800-263-5111

©2017 Nilfisk, Form L3249N 4-19-17

