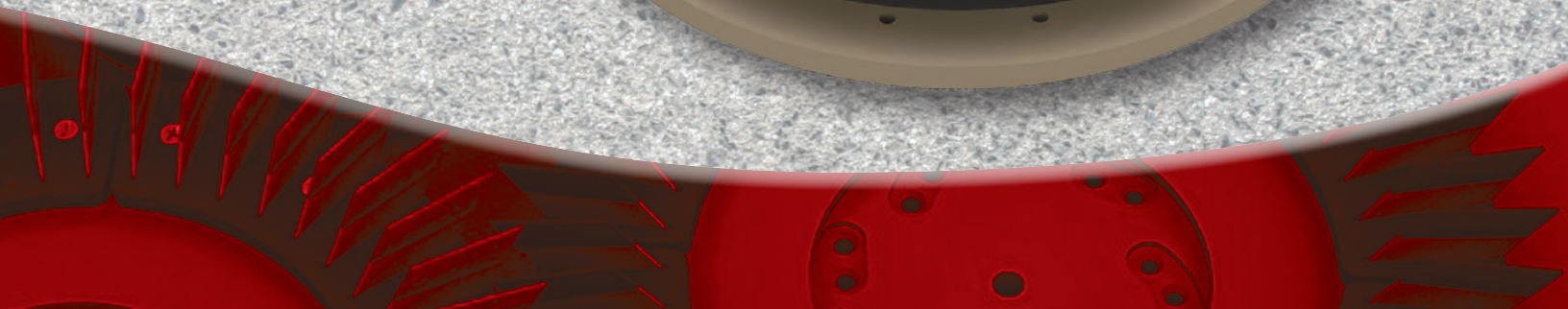
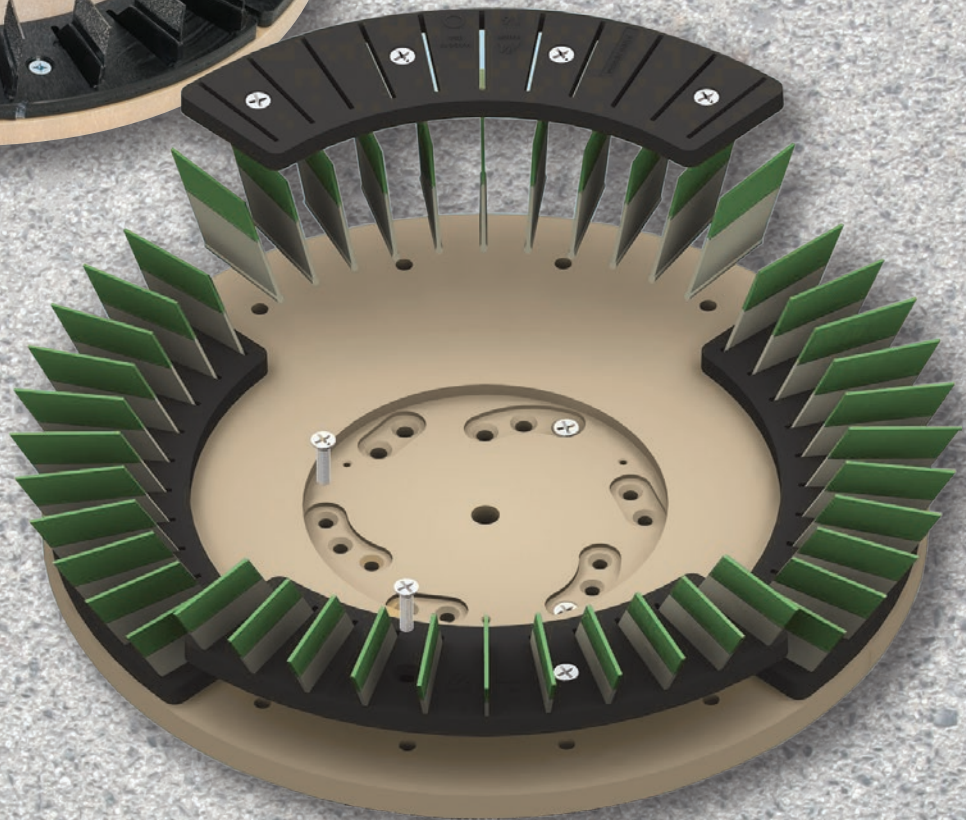




DIAMABRUSH™

A Revolution in Floor Restoration Technology

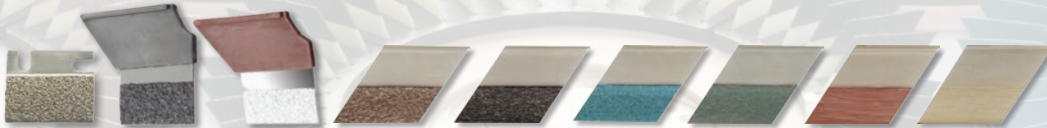


Diamabrush™ Restoration System

A revolutionary floor restoration technology using standard floor machines or auto-scrubbers for the following tasks:

- Concrete Polishing
- Aggressive Cleaning
- Prep and Restoration

Tool Application Chart

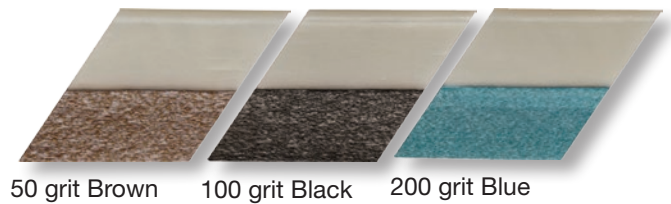


| TOOL APPLICATIONS | COATINGS REMOVAL TOOL | CONCRETE PREP PLUS TOOL -25 GRIT- | CONCRETE PREP PLUS TOOL -100 GRIT- | POLY 50 | POLY 100 | POLY 200 | POLY 400 | POLY 1000 | POLY 2000 |
|---------------------------------|--|--|---|---|---|--|--|---|---|
| REMOVAL | Removes mastic, carpet glues, paints, epoxy and thin-set | Removes paints and thin coats of epoxy-Preps floor for epoxy, glues, paints (6-8 passes) | | | | | | | |
| PREP | | Preps floor for epoxy, glues, paints | | | | | | | |
| POLISHING (CONCRETE & TERRAZZO) | | | Preps floor for Diamabrush Polishing System | Step One of polishing (6-8 passes) Suggested starting grit if floor is 5+ years old | Step Two of polishing (6-8 passes) | Step Three of polishing (6-8 passes) Suggested starting grit if floor is 3-4 years old | Step Four of polishing (6-8 passes) | Step Five of polishing (6-8 passes) Suggested starting grit if floor is 1-2 years old | Step Six of polishing (6-8 passes) Use as maintenance brush |
| SAND & RECOAT | | | | Preps existing epoxy floor for a recoat | Preps existing epoxy floor for a recoat | | | | |
| AGGRESSIVE CLEANING | | | | Removes heavy build-up | Removes medium build-up | Removes medium build-up | | | |

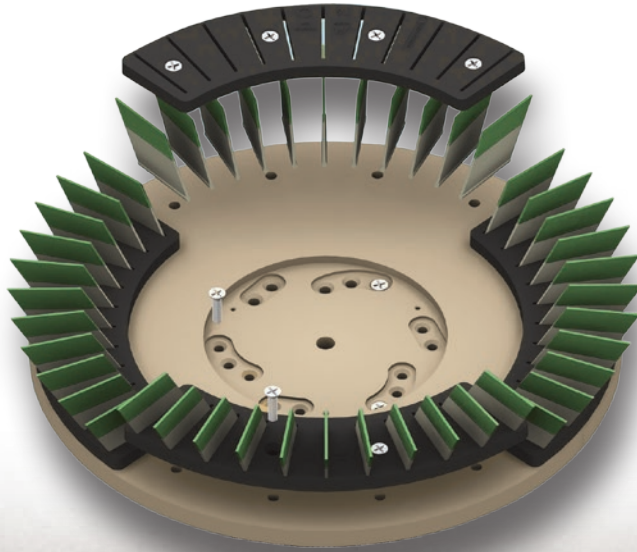


DIAMABRUSH™

Aggressive Cleaning



The polymer tools in the Diamabrush System can also be used for aggressive cleaning. Choose either the 50 grit, 100 grit, or 200 grit polymer tools to achieve a clean surface that was dirty or marred. For the dirtiest, grimeiest concrete, choose the 50 grit Brown. For moderately dirty floors, the 100 grit Black or 200 grit Blue will be appropriate. Using the same Diamabrush Concrete Polymer Tool as an aggressive cleaning tool maximizes your investment, making the Diamabrush System even more cost-effective.



- Remove embedded grease, grime, and rubber without the use of harmful chemicals.
- Deep cleanse your industrial/commercial concrete floor.
- Simultaneously clean and polish your floor to a “like new” finish.
- Work more efficiently – the Diamabrush Aggressive Cleaning System lasts up to 100,000 sq. ft.
- Easily maintain your floor by using your own cleaning equipment.

The Aggressive Cleaning System features money-saving replaceable blades.

Diamabrush™ Prep and Restoration Tool

The Diamabrush Prep and Restoration Tool enables you to prepare bare concrete or recoat epoxy or urethane floors with ease. Diamabrush is a *greener* floor preparation alternative compared to the waste generated by typical floor sanding techniques. The wet prep process using floor scrubbers avoids airborne dust thereby eliminating secondary cleanup. This tool cleans and creates a perfect profile for coating adhesion and helps you remove deep scratches and embedded dirt using your own cleaning machines. The true value of the Prep and Restoration Tool is that it prepares and cleans your surface in one simple step, saving you time and money.

Capable of lasting for up to 100,000 sq. ft., the Prep and Restoration Tool can be used wet or dry to remove dust. The patented diamond blades prevent the tool from becoming “gummed up,” a problem encountered with sanding machines. As with all Diamabrush tools, the Prep and Restoration Tool can be refurbished using replacement blades.



Diamabrush™ Concrete Polishing System

The Diamabrush Concrete Polishing System is unlike any conventional polishing system on the market. Beginning with the floor prep and progressing through a series of steps of concrete polishing, the Diamabrush Concrete Polishing System will work with standard floor buffers or Advance auto scrubbers. Once the multi-step process used to rejuvenate concrete floors is accomplished, the Diamabrush System actually continues to improve the look of your floor every time you clean and polish it—and at a fraction of the cost of “traditional” polishing. Nothing is required beyond your normal cleaning regimen.

The Diamabrush™ Concrete Prep Plus

The first step in the Diamabrush™ Concrete Polishing System involves abrading and leveling the surface to prepare it for polishing. The Diamabrush Concrete Prep Tool consists of a super tough 25 or 100 diamond grit that is bonded to steel blades overmolded in polymer. The flexible blades ensure the diamond abrasive tool remains in constant contact with the floor, regardless of imperfections including cracks or uneven floors. As you use the Concrete Prep Tool, multiple layers of diamonds on the blades are constantly exposed, maximizing tool life and effectiveness.

The patent pending Concrete Prep Tool can be refurbished by simply replacing the blades.

The Diamabrush logo is prominently displayed in the center, featuring the word "DIAMABRUSH" in a bold, blue, sans-serif font. A stylized blue diamond shape is positioned to the left of the text. The background of the bottom section of the image is a dark red, curved surface with a pattern of red lines and small circular indentations, resembling a floor or a tool component.

DIAMABRUSH™

Diamabrush™ Concrete Polishing Tools

Each step of the Diamabrush™ process is critical to achieving the desired results. As you progress through each grit tool, ensure the floor has uniformity in texture before proceeding to the next step. After completing the 400 grit step you will begin to notice a gloss starting to appear on the floor.



Step 1



Use the 50 grit Brown

Step 2

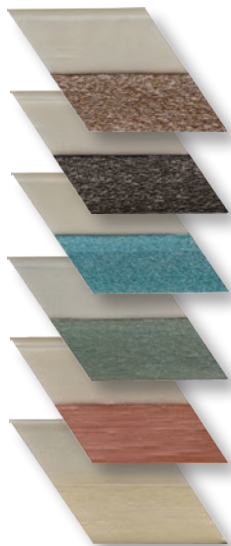


Use the 100 grit Black

Step 3



Use the 200 grit Blue



Six Polymer Tools

The Diamabrush Concrete Floor Polishing System progresses with increasingly fine grit polymer inserts. Just like with the Concrete Prep Tool, each Concrete Polishing Tool includes flexible blades that allow the diamonds to remain in constant contact with the floor.

The polymer blades are designed with removable, slotted retainers. Instead of having to replace the entire tool due to wear and tear, simply order a blade replacement kit. All polymer blades are easily removed and replaced, which enhances the life of the tool.



By the time you reach the end of this process, your floor will have transformed into a beautiful, smooth, high polished surface. The multi-step process provides the flexibility for you to decide how many steps your surface needs. The number of passes you make with each grit and the level of gloss you wish to obtain will determine how you best use the system for your particular application.



Step 4

Step 5

Step 6



Use the 400 grit Green



Use the 1000 grit Red



Use the 2000 grit Tan



Cleaner Conditioner Hardener

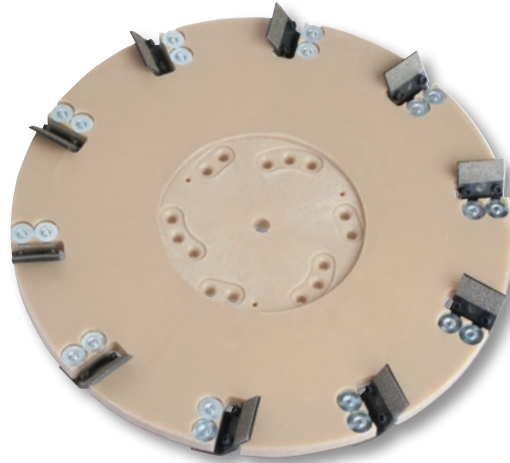
Specialty designed for concrete floors, terrazzo and other stone surfaces. 5-gallon container

- Maintains concrete floor hardness and shine
- Removes most common soils
- Flexible dilution for both surface and deep cleaning (64:1 or 32:1)
- Biodegradable

Diamabrush™ Coating Removal Tools

The Diamabrush™ Coating Removal Tool is the fastest, most effective tool for the removal of mastic, glues, adhesives, thin-set, and thin mil epoxies from concrete floors. Its patented design prevents the abrasive blades from loading up or clogging like other abrasive products, resulting in fast, consistent removal throughout the life of the blades.

- 10 times faster than manually scraping
- Limited surface contact during use
- Rigid, exposed diamond cutting surface creates a level floor with normal use
- No need for heavy, expensive and hard-to-use grinding equipment that often requires 480 3-phase power
- Designed to fit Pacesetter floor machines
- Features replaceable diamond blades



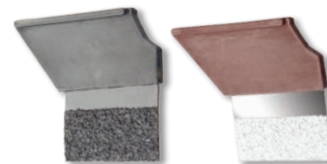
Coating Removal Tools

| Nilfisk P/N | Description | Floor Machine |
|-------------|---|-----------------------|
| 56383926 | 16 inch Mastic Removal Tool with Clutch Plate and 1- 1/2 inch Riser | Pacesetter 17 HD |
| 56383930 | 16 inch - 25 Grit Prep Plus CCW | Pacesetter 17 HD |
| 56383936 | 19 inch Mastic Removal Tool with Clutch Plate and 1- 1/2 inch Riser | Pacesetter 20HD, 20SD |
| 56384220 | 19 inch - 25 Grit Prep Plus CCW | Pacesetter 20HD, 20SD |

Blade Replacement Kits

| Nilfisk P/N | Description | Qty |
|-------------|---|-----|
| 56383928 | Mastic Blade Removal Replacement Kit | 10 |
| 56384246 | 16 inch Prep Plus 25 Grit Blade CCW Kit | 28 |
| 56384250 | 20 inch Prep Plus 25 Grit Blade CCW Kit | 36 |

Specifications are subject to change without notice.



DIAMABRUSH™ Ordering Guide

Blade Wear Chart*

| Blade Type | Average Sq Ft Range | Average Sq Meter Range |
|-------------------------|---------------------|------------------------|
| Coating Removal 25 Grit | 1,500 – 15,000 | 140 – 1,400+ |
| Prep Plus 25 Grit | 10,000 – 50,000 | 1,000 – 4,650 |
| Prep Plus 100 Grit | 15,000 – 60,000 | 1,400 – 5,600 |
| Polymer 50 Grit | 25,000 – 75,000 | 2,320 – 7,000+ |
| Polymer 100 Grit | 25,000 – 75,000 | 2,320 – 7,000+ |
| Polymer 200 Grit | 35,000 – 100,000+ | 3,251 – 9,300+ |
| Polymer 400 Grit | 50,000 – 100,000+ | 4,645 – 9,300+ |
| Polymer 1,000 Grit | 75,000+ | 7,000+ |
| Polymer 2,000 Grit | 75,000+ | 7,000+ |

*Note all estimates are on average and actual results will vary based on surface conditions, softness or hardness of concrete. Numbers do not represent the minimum or maximum square footage that will be attained.

14 inch Scrubber Tools

| Step | Nilfisk P/N | Description | Quantity Per Machine | | |
|------|-------------|------------------------|----------------------|-----------|------------------|
| | | | SC750 - 28D | SC900 28D | Advenger 2805D** |
| 1 | 56384211 | 25 Grit Prep Plus CW | 1 | 1 | 1 |
| | 56384212 | 25 Grit Prep Plus CCW | 1 | 1 | 1 |
| 2 | 56384213 | 100 Grit Prep Plus CW | 1 | 1 | 1 |
| | 56384214 | 100 Grit Prep Plus CCW | 1 | 1 | 1 |
| 3 | 56384223 | 50 Grit Polymer | 2 | 2 | 2 |
| 4 | 56384224 | 100 Grit Polymer | 2 | 2 | 2 |
| 5 | 56384225 | 200 Grit Polymer | 2 | 2 | 2 |
| 6 | 56384226 | 400 Grit Polymer | 2 | 2 | 2 |
| 7 | 56384227 | 1000 Grit Polymer | 2 | 2 | 2 |
| 8 | 56384228 | 2000 Grit Polymer | 2 | 2 | 2 |

14 inch Replacement Blade Kits

| Nilfisk P/N | Description | Qty. |
|-------------|------------------------|------|
| 56384241 | 25 Grit Prep Plus CW | 24 |
| 56384242 | 25 Grit Prep Plus CCW | 24 |
| 56384243 | 100 Grit Prep Plus CW | 24 |
| 56384244 | 100 Grit Prep Plus CCW | 24 |
| 56384253 | 50 Grit Polymer | 44 |
| 56384254 | 100 Grit Polymer | 44 |
| 56384255 | 200 Grit Polymer | 44 |
| 56384256 | 400 Grit Polymer | 44 |
| 56384257 | 1000 Grit Polymer | 44 |
| 56384258 | 2000 Grit Polymer | 44 |

16 inch Scrubber Tools

| Step | Nilfisk P/N | Description | Quantity Per Machine |
|------|-------------|------------------------|----------------------|
| | | | Adgressor 32D |
| 1 | 56384533 | 25 Grit Prep Plus CW | 1 |
| | 56384534 | 25 Grit Prep Plus CCW | 1 |
| 2 | 56384535 | 100 Grit Prep Plus CW | 1 |
| | 56384536 | 100 Grit Prep Plus CCW | 1 |
| 3 | 56384537 | 50 Grit Polymer | 2 |
| 4 | 56384538 | 100 Grit Polymer | 2 |
| 5 | 56384539 | 200 Grit Polymer | 2 |
| 6 | 56384540 | 400 Grit Polymer | 2 |
| 7 | 56384541 | 1000 Grit Polymer | 2 |
| 8 | 56384542 | 2000 Grit Polymer | 2 |

16 inch Replacement Blade Kits

| Nilfisk P/N | Description | Qty. |
|-------------|------------------------|------|
| 56384241 | 25 Grit Prep Plus CW | 24 |
| 56384242 | 25 Grit Prep Plus CCW | 24 |
| 56384243 | 100 Grit Prep Plus CW | 24 |
| 56384244 | 100 Grit Prep Plus CCW | 24 |
| 56384253 | 50 Grit Polymer | 44 |
| 56384254 | 100 Grit Polymer | 44 |
| 56384255 | 200 Grit Polymer | 44 |
| 56384256 | 400 Grit Polymer | 44 |
| 56384257 | 1000 Grit Polymer | 44 |
| 56384258 | 2000 Grit Polymer | 44 |

17 inch Scrubber Tools

| Step | Nilfisk P/N | Description | Quantity Per Machine | | | |
|------|-------------|------------------------|----------------------|-------------|------------------|--------------|
| | | | SC800 - 34D | SC900 - 34D | Advenger 3405D** | SC6000 - 34D |
| 1 | 56384215 | 25 Grit Prep Plus CW | 1 | 1 | 1 | 1 |
| | 56384216 | 25 Grit Prep Plus CCW | 1 | 1 | 1 | 1 |
| 2 | 56384217 | 100 Grit Prep Plus CW | 1 | 1 | 1 | 1 |
| | 56384218 | 100 Grit Prep Plus CCW | 1 | 1 | 1 | 1 |
| 3 | 56384229 | 50 Grit Polymer | 2 | 2 | 2 | 2 |
| 4 | 56384230 | 100 Grit Polymer | 2 | 2 | 2 | 2 |
| 5 | 56384231 | 200 Grit Polymer | 2 | 2 | 2 | 2 |
| 6 | 56384232 | 400 Grit Polymer | 2 | 2 | 2 | 2 |
| 7 | 56384233 | 1000 Grit Polymer | 2 | 2 | 2 | 2 |
| 8 | 56384234 | 2000 Grit Polymer | 2 | 2 | 2 | 2 |

17 inch Replacement Blade Kits

| Nilfisk P/N | Description | Qty. |
|-------------|------------------------|------|
| 56384245 | 25 Grit Prep Plus CW | 28 |
| 56384246 | 25 Grit Prep Plus CCW | 28 |
| 56384247 | 100 Grit Prep Plus CW | 28 |
| 56384248 | 100 Grit Prep Plus CCW | 28 |
| 56384253 | 50 Grit Polymer | 44 |
| 56384254 | 100 Grit Polymer | 44 |
| 56384255 | 200 Grit Polymer | 44 |
| 56384256 | 400 Grit Polymer | 44 |
| 56384257 | 1000 Grit Polymer | 44 |
| 56384258 | 2000 Grit Polymer | 44 |

Specifications are subject to change without notice.

**Advengers require special side skirt kits for proper clearance.

| 18 inch Scrubber Tools | | | Quantity Per Machine | Deck Position |
|------------------------|-------------|------------------------|----------------------|-----------------------|
| Step | Nilfisk P/N | Description | 7765 | |
| 1 | 56384543* | 25 Grit Prep Plus CW | 2 | Center and Right Left |
| | 56384544* | 25 Grit Prep Plus CCW | 1 | |
| 2 | 56384545* | 100 Grit Prep Plus CW | 2 | Center and Right Left |
| | 56384546* | 100 Grit Prep Plus CCW | 1 | |
| 3 | 56384547 | 50 Grit Polymer | 3 | All |
| 4 | 56384548 | 100 Grit Polymer | 3 | All |
| 5 | 56384549 | 200 Grit Polymer | 3 | All |
| 6 | 56384550 | 400 Grit Polymer | 3 | All |
| 7 | 56384551 | 1000 Grit Polymer | 3 | All |
| 8 | 56384552 | 2000 Grit Polymer | 3 | All |

*Caution: Ensure deck rotation switch is in position to achieve desired rotation.

| 18 inch Replacement Blade Kits | | | |
|--------------------------------|------------------------|-----------|----------|
| Nilfisk P/N | Description | Qty. Kits | Qty./Kit |
| 56384241 | 25 Grit Prep Plus CW | 3 | 24 |
| 56384250 | 25 Grit Prep Plus CCW | 1 | 36 |
| 56384243 | 100 Grit Prep Plus CW | 3 | 24 |
| 56384252 | 100 Grit Prep Plus CCW | 1 | 36 |
| 56384253 | 50 Grit Polymer | 3 | 44 |
| 56384254 | 100 Grit Polymer | 3 | 44 |
| 56384255 | 200 Grit Polymer | 3 | 44 |
| 56384256 | 400 Grit Polymer | 3 | 44 |
| 56384257 | 1000 Grit Polymer | 3 | 44 |
| 56384258 | 2000 Grit Polymer | 3 | 44 |

| 20 inch Scrubber Tools | | | Quantity Per Machine | |
|------------------------|-------------|------------------------|----------------------|------------|
| Step | Nilfisk P/N | Description | SC6000 40D | SC6500 40D |
| 1 | 56384215 | 25 Grit Prep Plus CW | 1 | 1 |
| | 56384216 | 25 Grit Prep Plus CCW | 1 | 1 |
| 2 | 56384217 | 100 Grit Prep Plus CW | 1 | 1 |
| | 56384218 | 100 Grit Prep Plus CCW | 1 | 1 |
| 3 | 56384557 | 50 Grit Polymer | 2 | 2 |
| 4 | 56384558 | 100 Grit Polymer | 2 | 2 |
| 5 | 56384559 | 200 Grit Polymer | 2 | 2 |
| 6 | 56384560 | 400 Grit Polymer | 2 | 2 |
| 7 | 56384561 | 1000 Grit Polymer | 2 | 2 |
| 8 | 56384562 | 2000 Grit Polymer | 2 | 2 |

| 20 inch Replacement Blade Kits | | |
|--------------------------------|------------------------|------|
| Nilfisk P/N | Description | Qty. |
| 56384249 | 25 Grit Prep Plus CW | 36 |
| 56384250 | 25 Grit Prep Plus CCW | 36 |
| 56384251 | 100 Grit Prep Plus CW | 36 |
| 56384252 | 100 Grit Prep Plus CCW | 36 |
| 56384253 | 50 Grit Polymer | 44 |
| 56384254 | 100 Grit Polymer | 44 |
| 56384255 | 200 Grit Polymer | 44 |
| 56384256 | 400 Grit Polymer | 44 |
| 56384257 | 1000 Grit Polymer | 44 |
| 56384258 | 2000 Grit Polymer | 44 |

| 20 inch Single Disc Machine Tools | | | Quantity Per Machine |
|-----------------------------------|-------------|------------------------|----------------------|
| Step | Nilfisk P/N | Description | Pacesetter 20SD |
| 1 | 56384219 | 25 Grit Prep Plus CW | 1 |
| | 56384220 | 25 Grit Prep Plus CCW | 1 |
| 2 | 56384221 | 100 Grit Prep Plus CW | 1 |
| | 56384222 | 100 Grit Prep Plus CCW | 1 |
| 3 | 56384235 | 50 Grit Polymer | 1 |
| 4 | 56384236 | 100 Grit Polymer | 1 |
| 5 | 56384237 | 200 Grit Polymer | 1 |
| 6 | 56384238 | 400 Grit Polymer | 1 |
| 7 | 56384239 | 1000 Grit Polymer | 1 |
| 8 | 56384240 | 2000 Grit Polymer | 1 |

Specifications are subject to change without notice.



Blade Retainers

| Nilfisk P/N | Description | Qty. |
|-------------|----------------------------------|------|
| 56384260 | DB-Poly Blade Retainer - 14 inch | 1 |
| 56384261 | DB-Poly Blade Retainer - 17 inch | 1 |
| 56384262 | DB-Poly Blade Retainer - 20 inch | 1 |
| 56384263 | DB-Prep Plus Retainer - 14 inch | 1 |
| 56384264 | DB-Prep Plus Retainer - 17 inch | 1 |
| 56384265 | DB-Prep Plus Retainer - 20 inch | 1 |



Accessories

| Nifisk P/N | Description | Qty |
|------------|----------------------------------|-----|
| 56365777 | Brush Driver Lug | 3 |
| 56506006 | Clutch Plate | 1 |
| 56383697 | Advenqer Side Skirt Extender Kit | 1 |

Densifier Cleaner

| Nilfisk P/N | Description | Size |
|-------------|------------------------|---------------|
| 56384259 | DB Cleaner Conditioner | 5 gallon pail |

Specifications are subject to change without notice.

Diamabrush™ Display Tool

| Nilfisk P/N | Description |
|-------------|--|
| 56384266 | Sample tool showing concrete polishing tools |

Notes

[illegible]



9435 Winnetka Avenue North
Brooklyn Park, MN 55445
www.advance-us.com
Phone 800-850-5559
Fax 800-989-6566

240 Superior Boulevard
Mississauga, Ontario, Canada L5T 2L2
www.nilfisk-advance.ca
Phone 800-668-8400
Fax 800-263-5111

©2016 Nilfisk, Form L3249N 11-7-16

