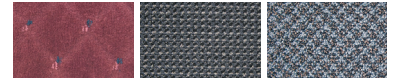


# Upright Vacuums and Rider Vacuum

## Commercial Equipment



### ReliaVac® 12 & 12DC

Single-motor  
Upright Carpet Vacuums

- 12 inch path is cleaned with a durable steel brush roller
- ReliaVac® 12 top fill bag enhances vacuum power
- ReliaVac® 12 DC model has an easy to empty dirt cup
- Removable clear fan cover allows for identifying and removing clogs



### Spectrum™ 15D & 18D

Dual-motor  
Upright Carpet Vacuums

- 14.5 or 17.5 inch cleaning path
- Separate vacuum and brush motors for a powerful performance
- 1,350 Watts of power with combination of independent brush and vacuum motors
- Adjustable brush height with low brush height indicator light
- Certified H.E.P.A. filtration standard
- Tools-free removable brush
- Heavy duty cord restraint
- Convenient front handle for lifting
- Accessories are conveniently tucked behind wand
- Sealed, maintenance-free cog belt



### ReliaVac® 12HP & 16HP

Single-motor  
Upright Carpet Vacuums

- 12 or 16 inch cleaning path
- High performance cleaning power with the aluminum brush roller
- Replaceable bristle strips and beater bars for versatile cleaning
- Removable clear fan cover allows for identifying and removing clogs
- Headlight illuminates work area



### CarpeTrievers™ 28

Large Area  
Upright Carpet Vacuum

- 28 inch cleaning path allows for increased productivity
- Dual vacuum motors provide generous pickup power
- Large 1 bushel capacity cloth bag is standard
- Carpet brush propels the machine, minimizing operator fatigue



### Spectrum™ 12P & 15P

Single-motor  
Upright Carpet Vacuums

- 11.5 or 14.5 inch cleaning path
- Powerful 1,000 Watt, 2-stage motor
- Adjustable brush height
- Certified H.E.P.A. filtration standard
- Tools-free removable brush
- Heavy duty cord restraint
- Convenient front handle for lifting
- Accessories are conveniently tucked behind wand
- Sealed, maintenance-free cog belt



### Spectrum™ 12H

Single-motor  
Upright Carpet Vacuum

- Designed for the hospitality market
- 33 foot detachable gray cord
- Non-marking tear-resistant bumper
- 11.5 inch cleaning path
- Powerful 1,000 Watt, 2-stage motor
- Adjustable brush height
- Certified H.E.P.A. filtration standard
- Tools-free removable brush
- Two heavy duty cord restraints
- Convenient front handle for lifting
- Accessories are conveniently tucked behind wand
- Sealed, maintenance-free cog belt



### VacRide™

Rider Vacuum

- Side broom creates 34 inch (86 cm) cleaning path
- 28 inch (71 cm) dual counter rotating brushes
- Dual vacuum motors with Quiet Mode provide superior suction and dirt pickup
- Includes detail wand
- Dual H.E.P.A. filters protect indoor air quality (IAQ)
- 7.8 gallon capacity dual layer disposal bag
- Optional 20 foot (6 m) hose with S-Wand, tools and caddy



Smart cleaning.

A Nilfisk-Advance Brand

## Technical Specifications

Models	ReliaVac® 12/12DC	ReliaVac® 12HP/16HP	CarpeTrier™ 28
Vacuum Motor	1.00 hp	1.00 hp	Two - 1.125 hp
Brush Motor	–	–	0.33 hp
Cleaning Path	13 in (33 cm)	13 in /18 in (33/46 cm)	28 in (71 cm)
Brush Length	12 in (30 cm)	12 in /16 in (30/40 cm)	25 in (65 cm)
Brush Height Settings	6	6	8
Dust Bag Capacity	4 gal (15 L)	4 gal (15 L)	9.3 gal (35 L)
Sound Level	75 dB A	75 dB A	70 dB A
Features	Steel Brushroll	Aluminum Brushroll	4:1 hose
Features	–	Headlight	Wand
Power Cable	50 ft yellow (16 m)	50 ft yellow (16 m)	75 ft yellow (23 m)
Height	45 in (114 cm)	45 in (114 cm)	38 in (96 cm)
Length	13 in (33 cm)	13 in/18 in (33/46 cm)	41 in (104 cm)
Width	13.5 in (34 cm)	13.5 in (34 cm)	29 in (75 cm)
Weight	17 lb/19 lb (7.7 kg/8.6 kg)	17 lb/18 lb (7.7 kg/8.2 kg)	110 lb (50 kg)

Models	Spectrum™ 12P	Spectrum™ 15P	Spectrum™ 12H	Spectrum™ 15D	Spectrum™ 18D
Vacuum Motor	1.34 hp	1.34 hp	1.34 hp	1.34 hp	1.34 hp
Brush Motor	–	–	–	0.47 hp	0.47 hp
Waterlift	92 in (234 cm)	92 in (234 cm)	92 in (234 cm)	92 in (234 cm)	92 in (234 cm)
CFM	93 (44 L/sec)	93 (44 L/sec)	93 (44 L/sec)	93 (44 L/sec)	93 (44 L/sec)
Cleaning Path	12 in (30 cm)	15 in (38 cm)	12 in (30 cm)	15 in (38 cm)	18 in (45.7 cm)
Brush Length	11.5 in (29.2 cm)	14.5 in (36.8 cm)	11.5 in (29.2 cm)	14.5 in (36.8 cm)	17.5 in (44.5 cm)
Brush Speed	2,800 rpm	2,800 rpm	2,800 rpm	2,800 rpm	2,800 rpm
Brush Height Settings	Variable, manual	Variable, manual	Variable, manual	Variable, manual	Variable, manual
Dust Bag Capacity	1 gal (4 L)	1 gal (4 L)	1 gal (4 L)	1 gal (4 L)	1 gal (4 L)
Filtration	3-level w/H.E.P.A. or 99.97@0.3 mic.	3-level w/H.E.P.A. or 99.97@0.3 mic.	3-level w/H.E.P.A. or 99.97@0.3 mic.	3-level w/H.E.P.A. or 99.97@0.3 mic.	3-level w/H.E.P.A. or 99.97@0.3 mic.
Sound Level	69 dB A	69 dB A	69 dB A	69 dB A	69 dB A
Tools Included	4:1 hose telescopic wand crevice tool upholstery tool	4:1 hose telescopic wand crevice tool upholstery tool	4:1 hose telescopic wand crevice tool upholstery tool	4:1 hose telescopic wand crevice tool upholstery tool	4:1 hose telescopic wand crevice tool upholstery tool
Power Cable	50 ft yellow (15 m)	50 ft yellow (15 m)	33 ft gray (10 m) detachable	50 ft yellow (15 m)	50 ft yellow (15 m)
Height	44 in (113 cm)	44 in (113 cm)	44 in (113 cm)	44 in (113 cm)	44 in (113 cm)
Length	13 in (33 cm)	13 in (33 cm)	13 in (33 cm)	13 in (33 cm)	13 in (33 cm)
Width	12 in (30 cm)	15 in (38 cm)	12 in (30 cm)	15 in (38 cm)	18 in (46 cm)
Weight	19.8 lb (9 kg)	20.1 lb (9.1 kg)	19.3 lb (8.3 kg)	21.3 lb (9.7 kg)	22 lb (10 kg)

Specifications are subject to change without notice.

Models	VacRide™
Brush Motor 1	0.5 hp
Brush Motor 2	0.5 hp
Vacuum Motor 1	438 W, single stage, 25 H <sub>2</sub> O, 140 cfm
Vacuum Motor 2	560 W, three stage, 70 H <sub>2</sub> O, 66 cfm
Cleaning Path	34 in (86 cm) cleaning path with side broom
Brush Length	28 in (71 cm)
Brush Speed	1,500 rpm for both motors
Brush Height Settings	Variable, manual
Dust Bag Capacity	7.8 gal
Filtration	Dual H.E.P.A. filters
Sound Level	67 dB A / 64 dB A (Quiet Mode)
Max Transport Speed	3.9 mph (6.3 kph)
Max Cleaning Speed	3.1 mph (4.8 kph)
Max Coverage per hour	46,675 ft <sup>2</sup> (4,336 m <sup>2</sup> )
Tools Included	detail wand (optional accessories are available)
Power	(4) Ah wet batteries or Ah maint-free (AGM) batteries
Height	51.25 in (130.2 cm)
Length	52.25 in (132.7 cm)
Width	31.75 in (80.6 cm)
Weight	1,026 lb (465 kg) with 420 Ah batteries



14600 21st Avenue North  
Plymouth, MN 55447-3408  
www.advance-us.com  
Phone 800-850-5559  
Fax 800-989-6566

240 Superior Boulevard  
Mississauga, Ontario, Canada L5T 2L2  
www.nilfisk-advance.ca  
Phone 800-668-8400  
Fax 800-263-5111