

ENGLISH

Models:
Basic, STD1, STD2, STD3

VP 600

Service Manual

”

Preface	3
Safety Issues	4
Technical specifications	5
Construction	9
Parts	17
Diagrams	18
Notes	19

In this manual you will find the essentials you need to know when repairing the wet and dry vacuum cleaners in the VP600 series. When carrying out repairs, make sure you have a suitable workbench or the like with the necessary water and power supply available.

- If you determine an error in operation, be sure to refer the customer to the user manual.

A fault in the equipment can have a number of causes. The chapter "service / repair" will help you here. Use the illustrated spare parts lists for your repairs. These show you the location of the individual parts and the sequence in which they are assembled.

- Always refer to the technical service bulletin information sheets. Also known as TSB's

These will tell you about any technical modifications made after publication of this service manual.

- Only use **original Nilfisk-Advance** spare parts

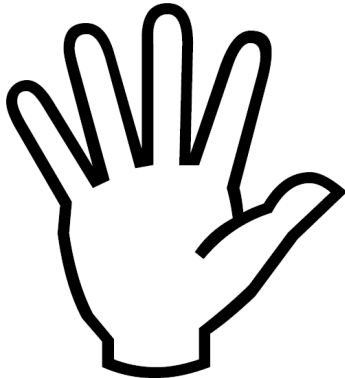
It is under no circumstances legal to provide this service manual and any technical service bulletin that might be released to third party without a written approval from the Global Product Management group, located at

Sognevej 25, 2605 Brøndby, Denmark

**To be performed by a skilled or instructed person only !
Disconnect the vacuum cleaner from the power supply before
starting the work!**



Safety instructions marked with this symbol in this manual must be observed to prevent danger to persons.



This symbol is used to mark safety instructions that must be observed to prevent damage to the equipment and degradation of performance.



This symbol indicates tips and instructions to simplify work and to ensure safe operation.

Master Description	VP600 BASIC EU	VP600 STD-2 EU	VP600 STD-3 EU
Item number	107412036	41600803	41600804
Energy Rating	A	A	A
kWh/annum	23	15	15
Dust pick up hard floor	D	B	B
Dust pick up carpet	na	E	E
Emission	A	A	A
Standard Features			
Motors	1	1	1
Voltage	220 - 240v	220 - 240v	220 - 240v
Power(W)*	800w	350/ 800w	350/ 800w
Weight, machine only (Kg)	7	7	8
Container size (l)	10	10	10
Net filling (l)	8	8	8
Motor lifetime (hours)	1000	1000	1000
Cable length (m)**	10	15	10
Cable type	Fixed	Detachable	Re-winder
Hose & Cable Storage	Yes	Yes	Yes
Hose length (m)	1,9	1,9	1,9
Hose/tube diameter (mm)	32mm	32mm	32mm
Sound power level (LO/HI) (dB)	71	66/ 71	66/ 71
Sound pressure (LO/HI) (dB)	54	47/54	47/54
2-speed	No	Yes	Yes
Sack-filter	Yes	Yes	Yes
H13 Exhaust	Yes	Yes	Yes
Nozzle Hard floor	Yes	No	No
Nozzle Combination	No	Yes	Yes
Crevice nozzle	Yes	Yes	Yes
Brush nozzle	Yes	Yes	Yes
Tube, Aluminium – 2 pcs 500mm	Yes	No	No
Telescopic Tube – Aluminium	No	Yes	Yes

Technical specification for the VP600 EU variants

Master Description	VP600 Basic UK	VP600 STD2 UK	VP600 STD3 UK
Item number	107412037	41600805	107412045
Energy Rating	A	A	A
kWh/annum	23	15	15
Dust pick up hard floor	D	B	B
Dust pick up carpet	na	E	E
Emission	A	A	A
Standard Features			
Motors	1	1	1
Voltage	220-240v	220-240v	220-240v
Power(W)*	800w	350/800w	350/ 800w
Weight, Machine only (Kg)	7	7	8
Container size (l)	10	10	10
Net filling (l)	8	8	8
Motor lifetime (hours)	1000	1000	1000
Cable length (m)**	10	10	8
Cable type	Fixed	Detachable	Re-winder
Hose & Cable Storage	Yes	Yes	Yes
Hose length (m)	1,9	1,9	1,9
Hose/tube diameter (mm)	32mm	32mm	32mm
Sound power level (LO/HI) (dB)	71	66/ 71	66/ 71
Sound pressure (LO/HI) (dB)	54	47/54	47/54
2-speed	No	Yes	Yes
Sack-filter	Yes	Yes	Yes
H13 Exhaust	Yes	Yes	Yes
Nozzle Hard floor	Yes	No	No
Nozzle Combination	No	Yes	Yes
Crevice nozzle	Yes	Yes	Yes
Brush nozzle	Yes	Yes	Yes
Tube, Aluminium – 2 pcs 500mm	Yes	No	No
Telescopic Tube – Aluminium	No	Yes	Yes

Technical specification for the VP600 UK variants

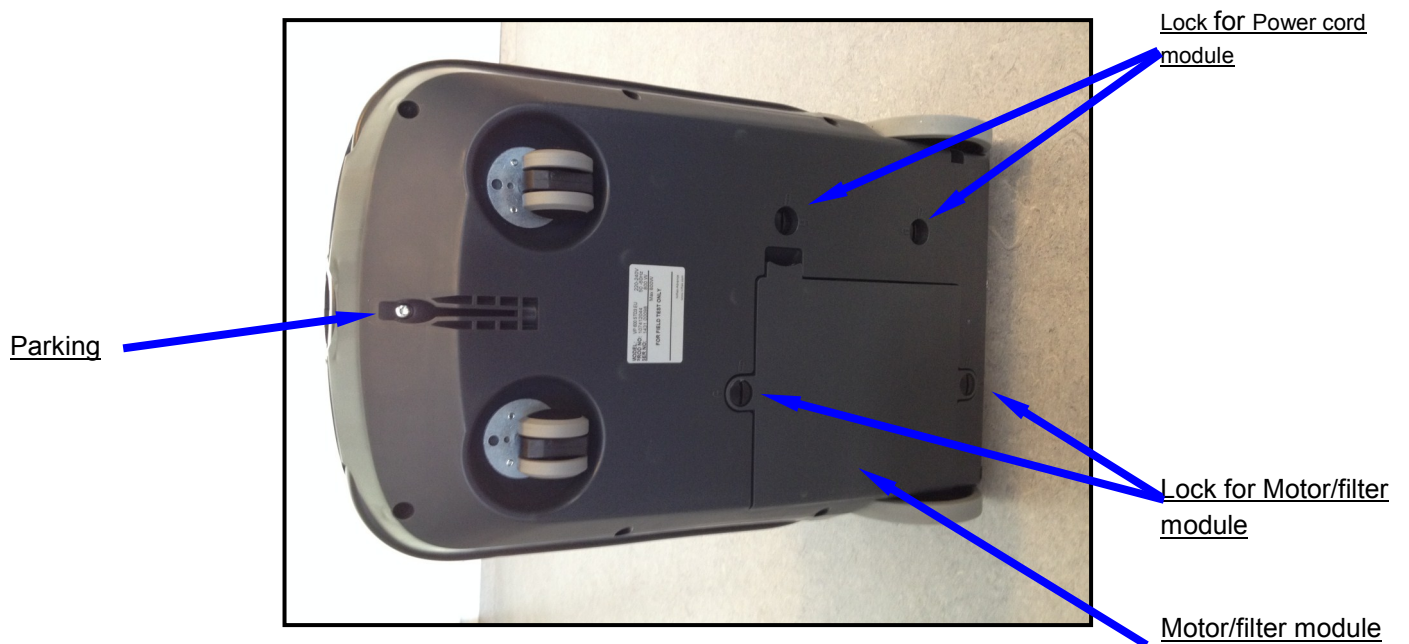
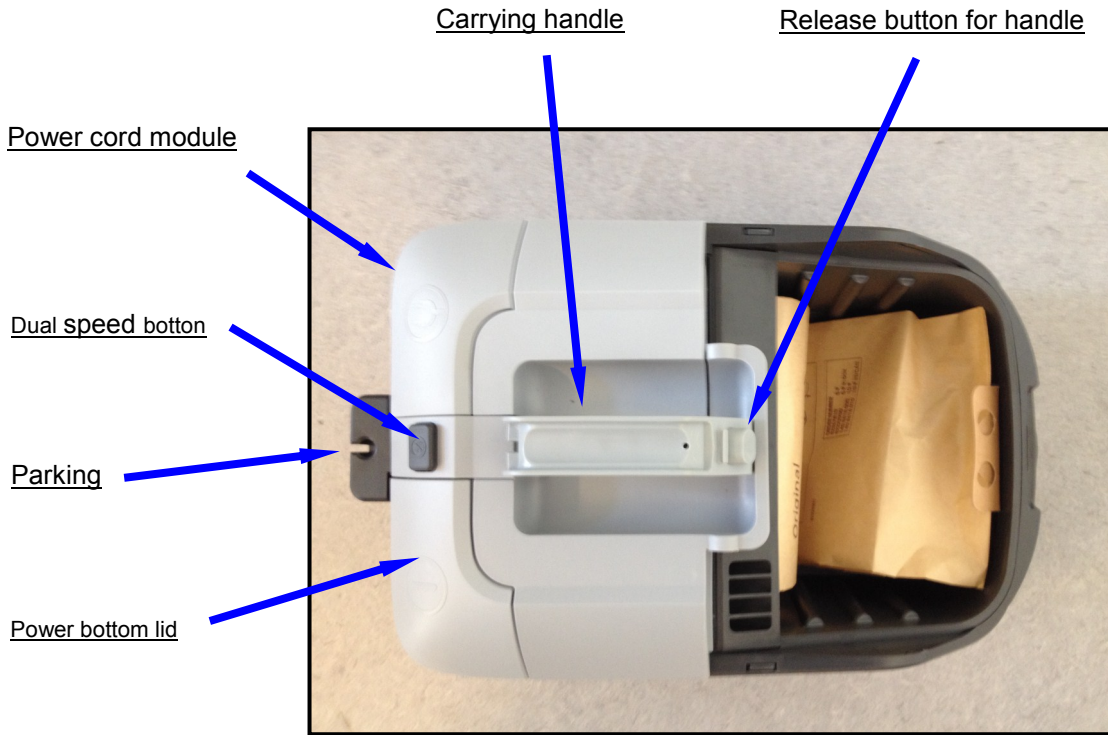
Master Description	VP600 STD1 Aus/Nz	VP600 STD3 Aus/Nz	VP600 STD2 US
Item number	107412039	107412047	107412042
Energy Rating	na	na	na
kWh/annum	na	na	na
Dust pick up hard floor	na	na	na
Dust pick up carpet	na	na	na
Emission	na	na	na
Standard Features			
Motors	1	1	1
Voltage	220-240	220-240	120v
Power(W)*	350/ 800w	350/ 800w	350/ 800w
Weight, Machine only (Kg)	7	8	7
Container size (l)	10	10	10
Net filling (l)	8	8	8
Motor lifetime (hours)	1000	1000	1000
Cable length (m)**	10	10	10
Cable type	Detachable	Re-winder	Detachable
Hose & Cable Storage	Yes	Yes	Yes
Hose length (m)	1,9	1,9	1,9
Hose/tube diameter (mm)	32mm	32mm	32mm
Sound power level (LO/Hi) (dB)	66/ 71	66/ 71	66/ 71
Sound pressure (LO/Hi) (dB)	47/54	47/54	47/54
2-speed	Yes	Yes	Yes
Sack-filter	Yes	Yes	Yes
H13 Exhaust	Yes	Yes	Yes
Nozzle Hard floor	Yes	No	No
Nozzle Combination	No	Yes	Yes
Crevice nozzle	Yes	Yes	Yes
Brush nozzle	Yes	Yes	Yes
Tube, Aluminium – 2 pcs 500mm	Yes	No	No
Telescopic Tube – Aluminium	No	Yes	Yes

Technical specification for the VP600 AU / NZ and US variants

Master Description	VP600 STD2 CN	VP600 STD3 JP
Item number	107412043	107412046
Energy Rating	na	na
kWh/annum	na	na
Dust pick up hard floor	na	na
Dust pick up carpet	na	na
Emission	na	na
Standard Features		
Motors	1	1
Voltage	220-240	100v
Power(W)*	350/ 800w	350/ 800w
Weight Machine only (Kg)	7	8
Container size (l)	10	10
Net filling (l)	8	8
Motor lifetime (hours)	1000	1000
Cable length (m)**	15	7,5
Cable type	Detachable	Re-winder
Hose & Cable Storage	Yes	Yes
Hose length (m)	1,9	1,9
Hose/tube diameter (mm)	32	32mm
Sound power level (LO/Hi) (dB)	66/71	66/ 71
Sound pressure (LO/Hi) (dB)	47/54	47/54
2-speed	Yes	Yes
Sack-filter	Yes	Yes
H13 Exhaust	Yes	Yes
Nozzle Hard floor	No	No
Nozzle Combination	Yes	Yes
Crevice nozzle	Yes	Yes
Brush nozzle	Yes	Yes
Tube, Aluminium – 2 pcs 500mm	No	No
Telescopic Tube – Aluminium	Yes	Yes

Technical specification for the VP600 JP and CN variants

VP600 - Top and bottom

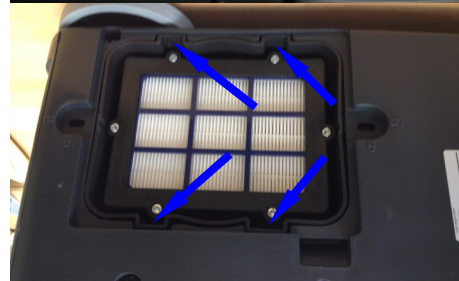
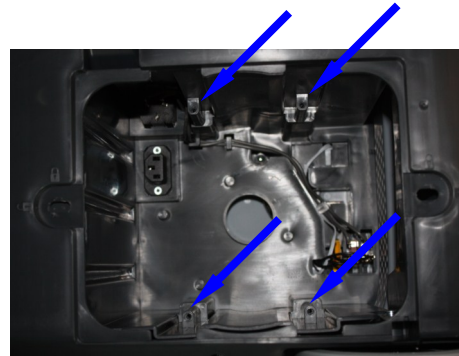


VP600 - Motor/filter module change



Step 1

Turn lock to unlock the lid.



Step 2

Unscrew the four screws (Torx 20) below the filter screws.



Step 3

Take out the complete motor module and replace it with a new module.
 Here shown without a HEPA filter.

Step 4

Fasten the module in reverse order.

Please refer to the spare part list for part numbers.

VP600 - Power cord module change



Step 1

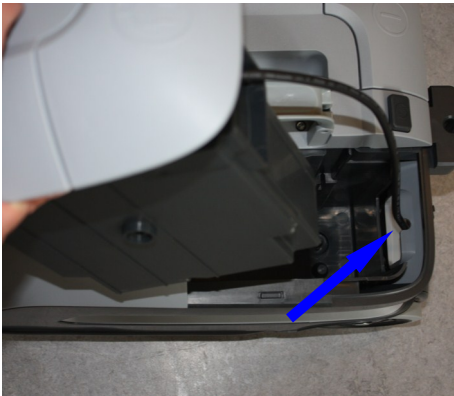
Turn lock in the bottom of the vacuum to unlock the Power cord mod-



Step 2

Pull out the Power cord module from the top.

Note: When changing a cord rewind module remember to pull out the cord a bit before lifting off the module



Step 3

Insert the new module.

Note: Make sure that the cord are placed in the recess when sliding the module back in place.

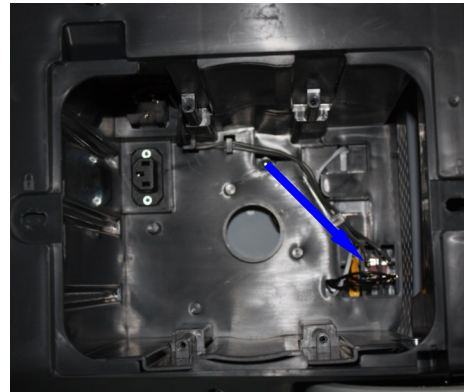
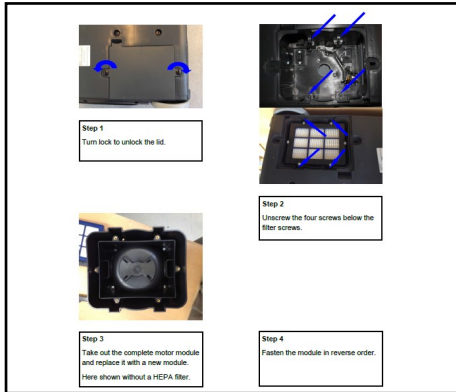


Step 4

Turn lock in the bottom of the to unlock the Power cord module.

Please refer to the spare part list for part numbers.

VP600 - Power switch change



Step 2

Take out the Motor module as shown in "Motor/filter change"

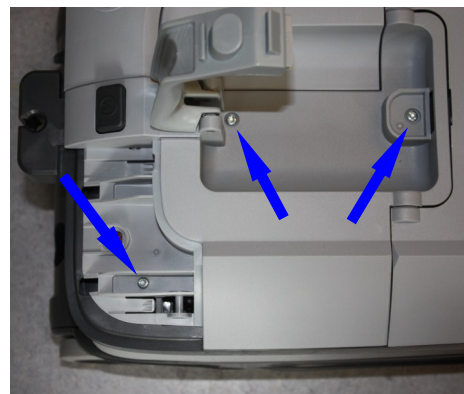
Step 2

Unplug the wires for the Power switch.



Step 3

Release the Power button lid by inserting a flat headed screwdriver and pressing down on the tabs. Then pull the lid backwards.



Step 4

Unscrew the three screws (Torx 20) and lift off the handle top.

Please refer to the spare part list for part numbers.

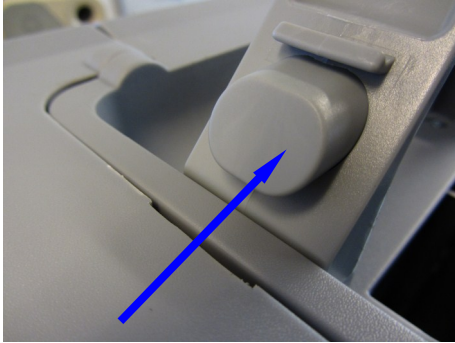
VP600 - Power switch change (continued)**Step 5**

Change the Power switch with a new one and connect the wires from below.

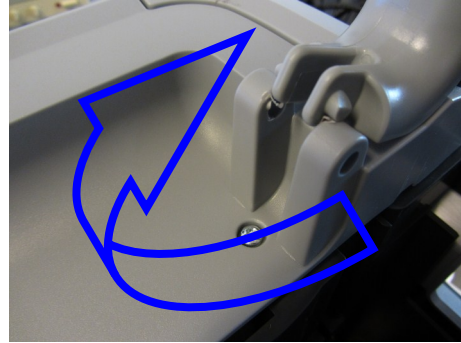
Step 6

Reassemble the machine again.

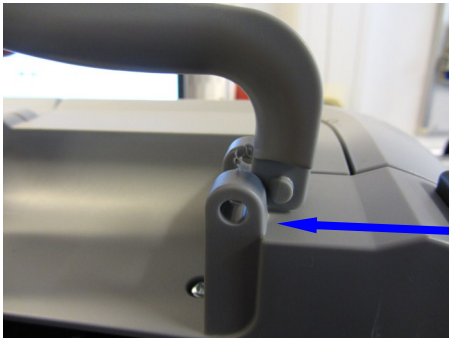
Please refer to the spare part list for part numbers.

VP600 - Handle change**Step 1**

Open handle by pressing spring loaded button on front

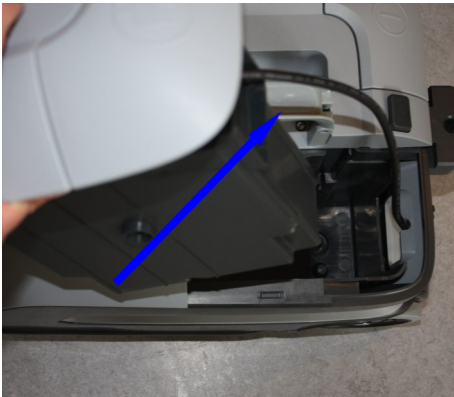
**Step 2**

Force handle backwards until it breaks free

**Step 3**

In upright position, push handle between clamps

Please refer to the spare part list for part numbers.

VP600 - Left Wheel change**Step 1**

Remove cable module (See page 11 of this manual)

**Step 2**

From top of vacuum press washer to release axel and pull wheel free of cabinet

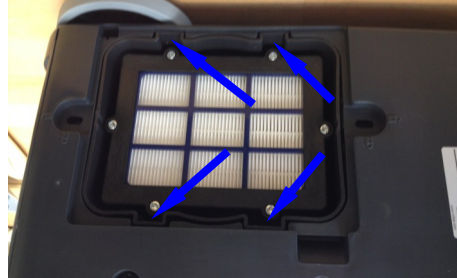
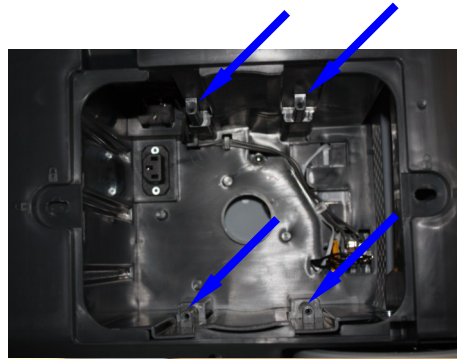
Please refer to the spare part list for part numbers.

VP600 - right Wheel change



Step 1

Turn lock to unlock the lid.



Step 2

Unscrew the four screws (Torx 20) below the filter screws.



Step 3

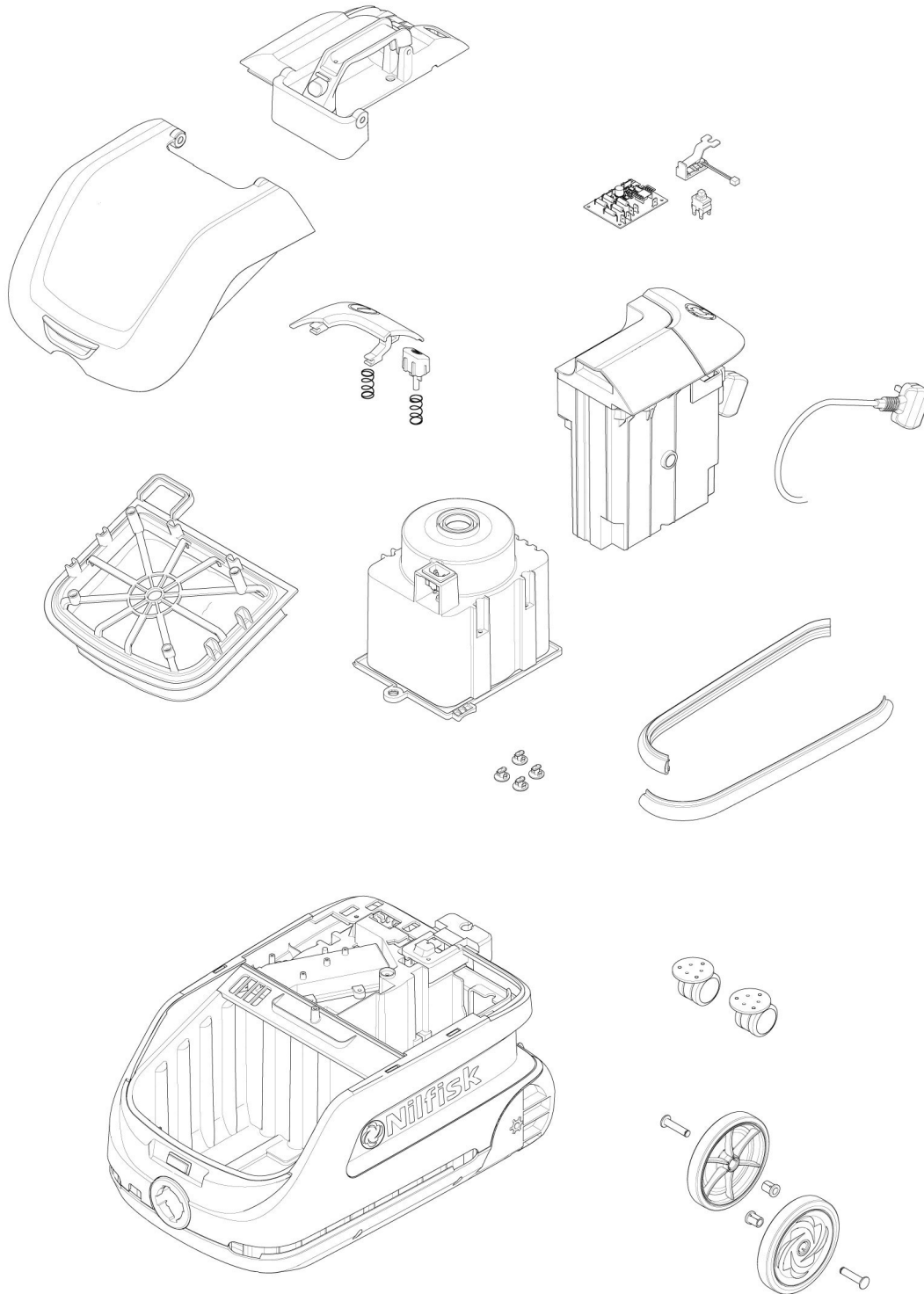
From bottom of vacuum press washer to release axle and pull wheel free of cabinet

Step 4

Fasten the module in reverse order.

Please refer to the spare part list for part numbers.

VP600



Electrical diagram